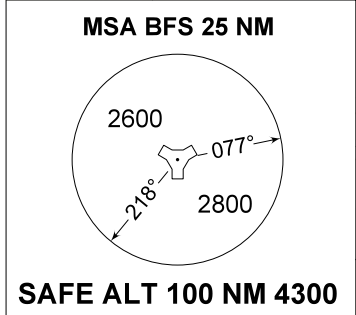
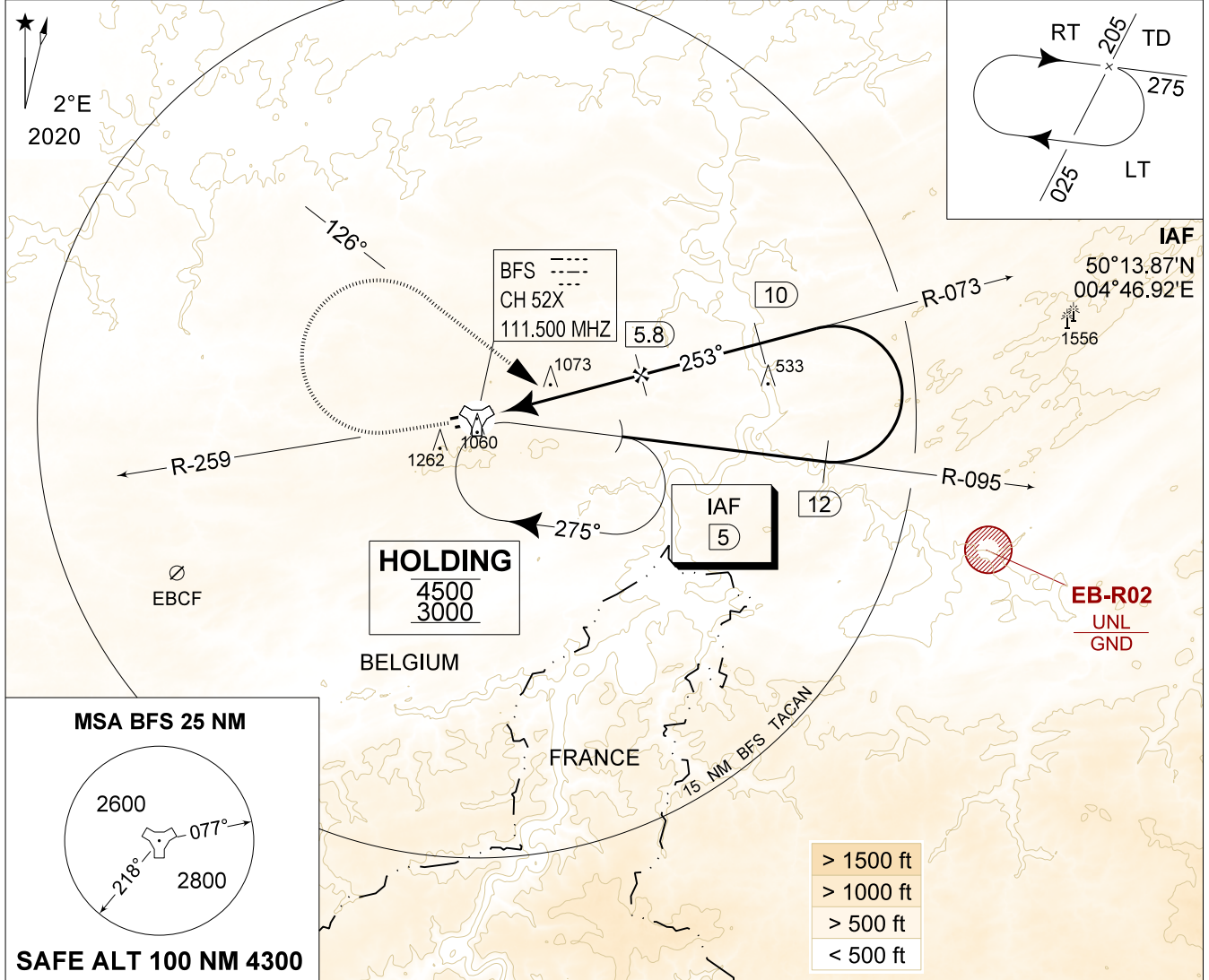


MIPS
INSTRUMENT APPROACH CHART

AD ELEV 927

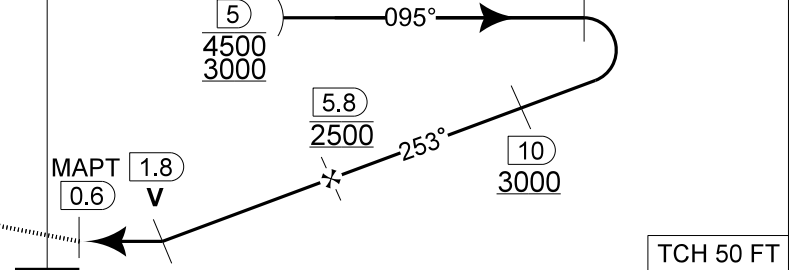
TACAN RWY 26R
FLORENNES (EBFS)

BELGA RADAR 374.400 129.325		FLORENNES APP 372.275 124.380		FLORENNES TWR 234.800 125.880		FLORENNES GND 356.925 122.100	
TACAN BFS CH 52X	APP COURSE 253°	FAF ALT 2500 FT	DESCENT GR 4.8% (2.75°)	MDA 1320	THR 924 FT	ALS 900 M	LDA 8763 FT



DME BFS	5	4	3	2	TACAN	REMAIN WITHIN 16 DME	TA 4500
Altitude	2250	1960	1670	1380			4500
Height	(1330)	(1040)	(750)	(460)			3000

MISSED APPROACH
Climb to 2000 FT on R-259. Passed 2.5 DME TACAN, continue the climb to 3000 FT and turn right on track 126° at MAX 210 KIAS (MAX 300 KIAS for HPMA) to intercept IAF TACAN RWY 26R.



CAT I	THR 924	5.2	TCH 50 FT
-------	---------	-----	-----------

CATEGORY	A	B	C	D	HPMA
S-TAC 26R	1320 - 1.3 396 (400 - 1.3 / 2.2)				
CIRCLING	1560 - 1.6 633 (700 - 1.6)	1660 - 3.6 733 (800 - 3.6)		1560 - 3.2 633 (700 - 3.2)	

TACAN RWY 26R 50°14.60' N 004°38.74' E **FLORENNES (EBFS)**

CHANGES: EB-R02 updated

BEL DEFENCE, AIR COMPONENT 25-JAN-2024 - THS