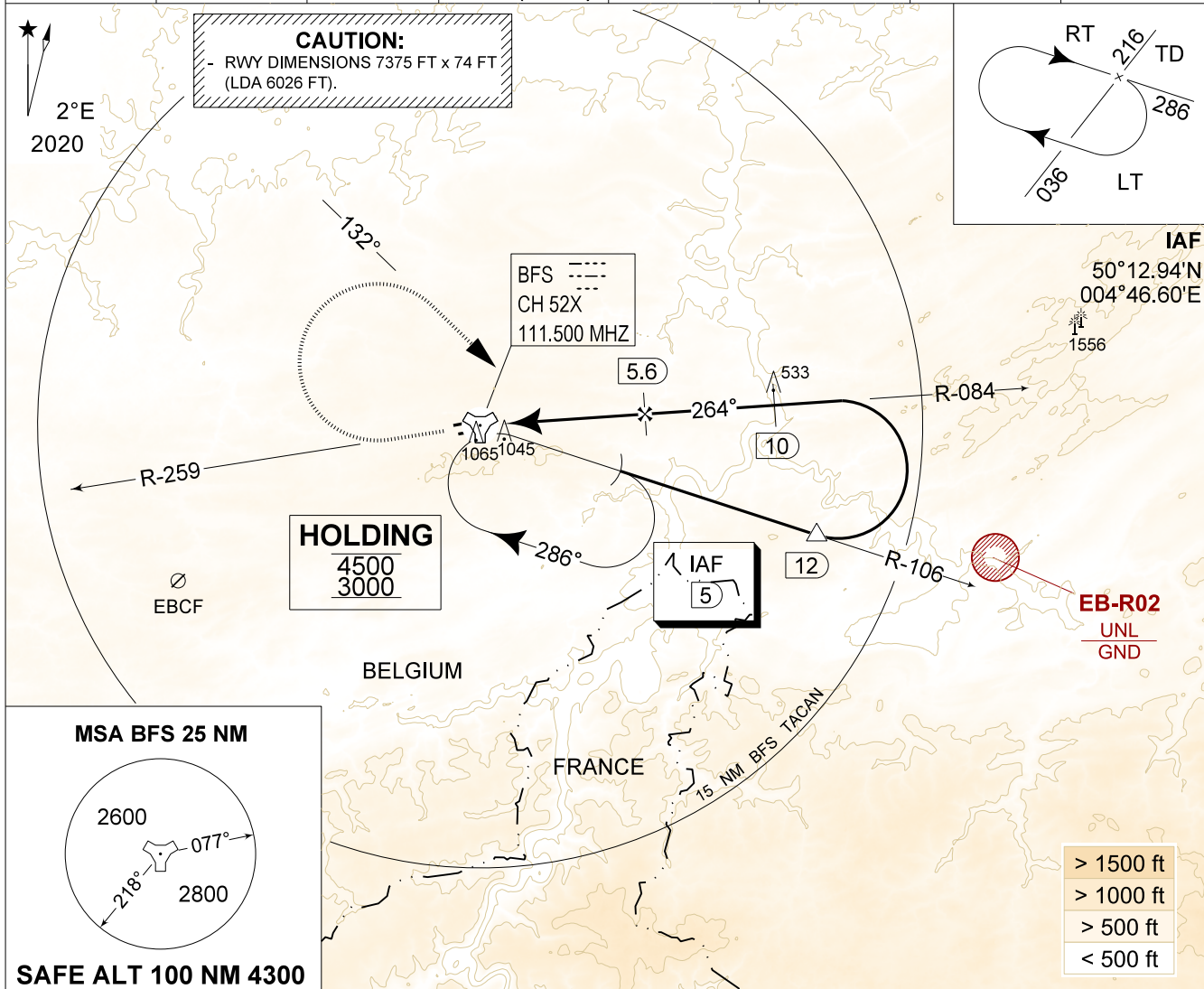


MIPS
INSTRUMENT APPROACH CHART

AD ELEV 927

TACAN RWY 26L
FLORENNES (EBFS)

BELGA RADAR 374.400 129.325		FLORENNES APP 372.275 124.380		FLORENNES TWR 234.800 125.880		FLORENNES GND 356.925 122.100	
TACAN BFS CH 52X	APP COURSE 264°	FAF ALT 2500 FT	DESCENT GR 4.8%(2.75°)	MDA 1340	THR 903 FT	ALS 210 M	LDA 6026 FT



DME BFS	5	4	3	2	TACAN	TA 4500
Altitude	2340	2040	1750	1460		
Height	(1440)	(1140)	(850)	(560)		

MISSED APPROACH
Climb to 2000 FT on R-259. Passed 2.5 DME TACAN, continue the climb to 3000 FT and turn right on track 132° at MAX 210 KIAS (MAX 300 KIAS for HPMA) to intercept IAF TACAN RWY 26L.

S-ALS	THR 903	5.3	TCH 50 FT
-------	---------	-----	-----------

CATEGORY	A - B	C - D
S-TAC 26L	1340 - 1.5 437 (500 - 1.5 / 2.5)	1340 - 2.3 437 (500 - 2.3 / 2.5)
CIRCLING	1560 - 1.6 633 (700 - 1.6)	1660 - 3.6 733 (800 - 3.6)

TACAN RWY 26L 50°14.60' N
004°38.74' E **FLORENNES (EBFS)**

CHANGES: EB-R02 updated

BEL DEFENCE, AIR COMPONENT 25-JAN-2024 - THS