

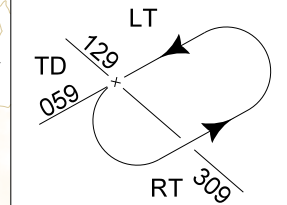
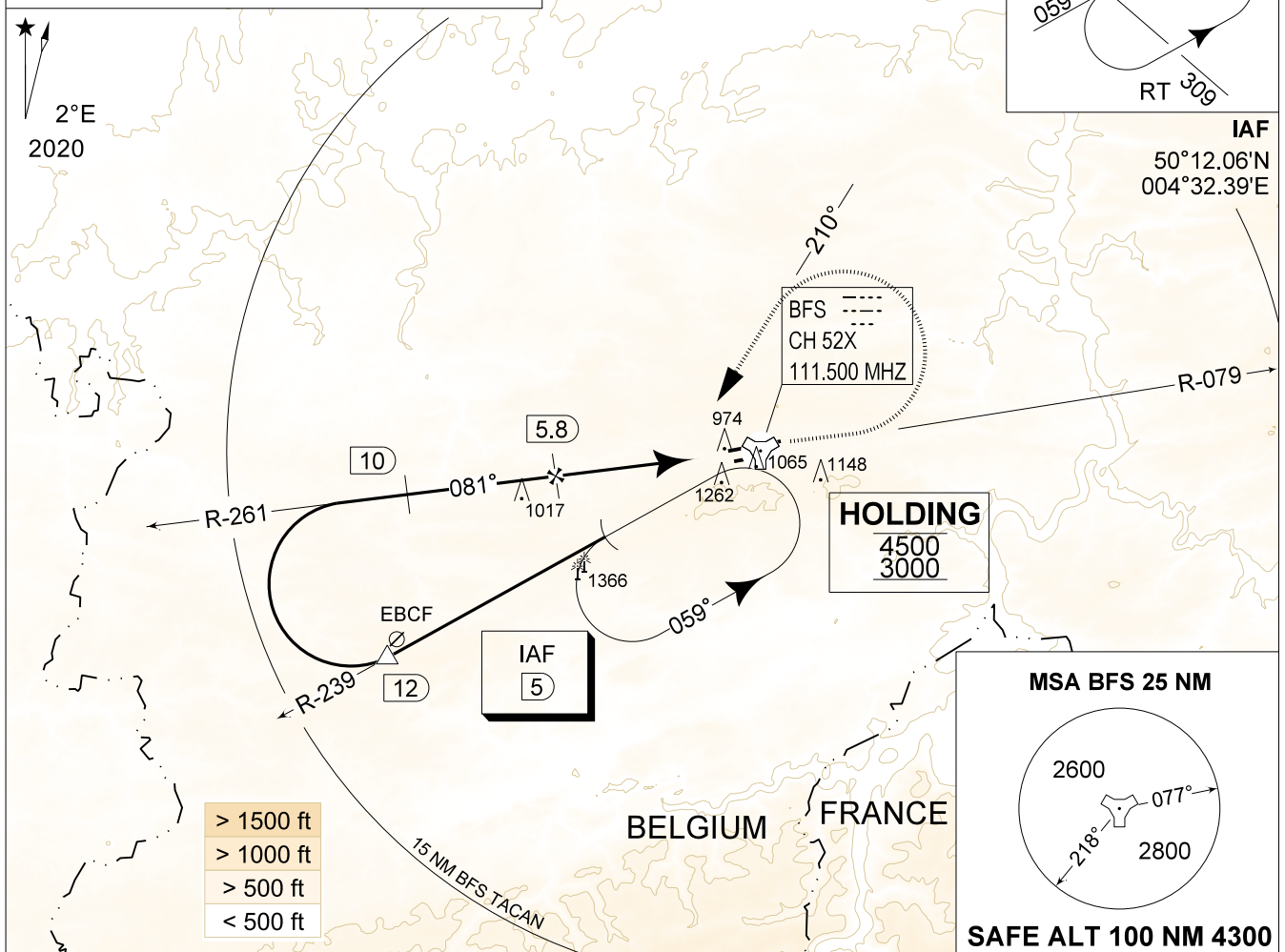
**MIPS**  
**INSTRUMENT APPROACH CHART**

AD ELEV 927

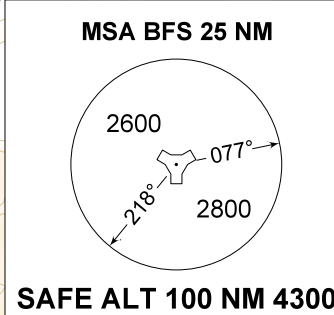
**TACAN RWY 08L**  
**FLORENNES (EBFS)**

|                                |                    |                                  |                           |                                  |               |                                  |                |
|--------------------------------|--------------------|----------------------------------|---------------------------|----------------------------------|---------------|----------------------------------|----------------|
| BELGA RADAR<br>374.400 129.325 |                    | FLORENNES APP<br>372.275 124.380 |                           | FLORENNES TWR<br>234.800 125.880 |               | FLORENNES GND<br>356.925 122.100 |                |
| TACAN<br>BFS CH 52X            | APP COURSE<br>081° | FAF ALT<br>2500 FT               | DESCENT GR<br>5.2%(3.00°) | MDA<br><b>1400</b>               | THR<br>900 FT | ALS<br>750 M                     | LDA<br>8648 FT |

**CAUTION:**  
a) LOCALIZER ANTENNA 1000 FT IN FRONT OF THR RWY 08L, 10 FT ABOVE THR ELEV.

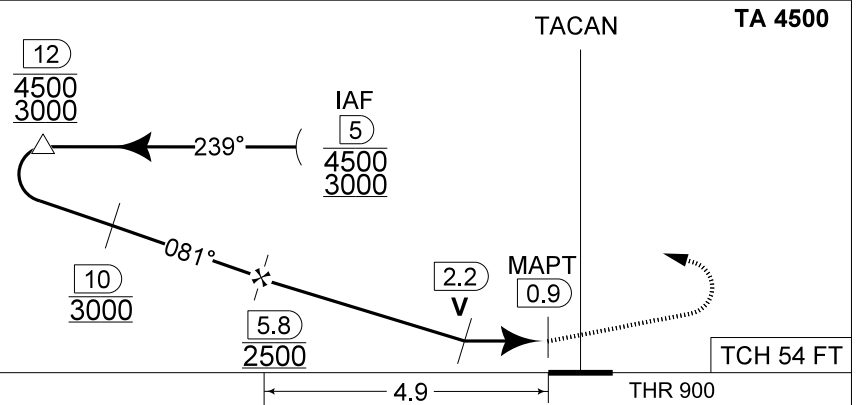


**IAF**  
50°12.06'N  
004°32.39'E



|          |        |        |       |
|----------|--------|--------|-------|
| DME BFS  | 5      | 4      | 3     |
| Altitude | 2260   | 1950   | 1630  |
| Height   | (1360) | (1050) | (730) |

**MISSED APPROACH**  
Climb to 2000 FT on R-079. Passed 2.5 DME TACAN, continue the climb to 3000 FT and turn left on track 210° at MAX 210 KIAS (MAX 300 KIAS for HPMA) to intercept IAF TACAN RWY 08L.



CAT I

|           |   |   |   |   |                                   |
|-----------|---|---|---|---|-----------------------------------|
| CATEGORY  | A                                       | B | C                                       | D | HPMA                              |
| S-TAC 08L | <b>1400</b> - 1.5 500 (500 - 1.5 / 2.6) |   | <b>1400</b> - 1.9 500 (500 - 1.9 / 2.6) |   |                                   |
| CIRCLING  | <b>1560</b> - 1.6 633 (700 - 1.6)       |   | <b>1660</b> - 3.6 733 (800 - 3.6)       |   | <b>1560</b> - 3.2 633 (700 - 3.2) |

**TACAN RWY 08L** 50°14.60' N  
004°38.74' E **FLORENNES (EBFS)**

CHANGES: GROUND FREQ updated

BEL DEFENCE, AIR COMPONENT 07-SEP-2023 - THS