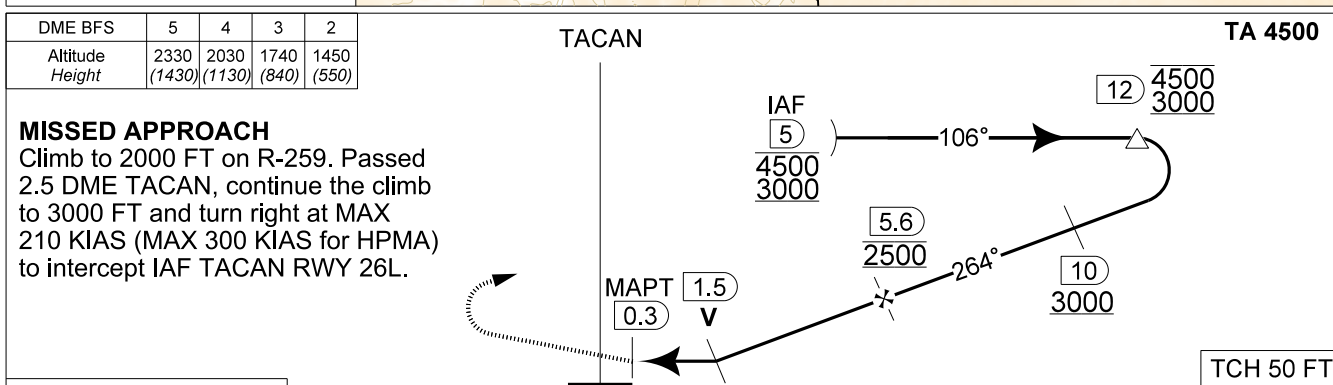
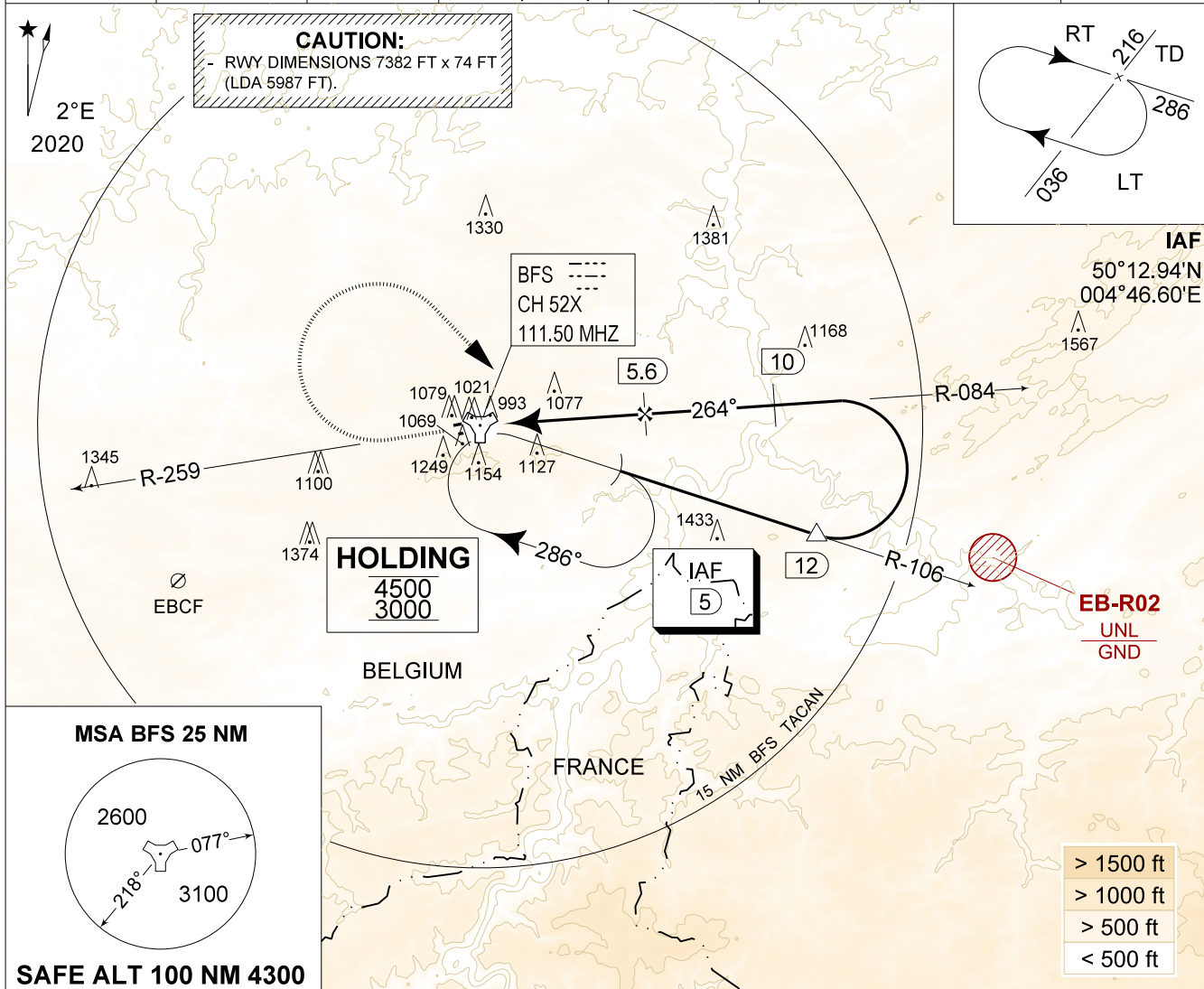


MIPS
INSTRUMENT APPROACH CHART

AD ELEV 927

TACAN RWY 26L
FLORENNES (EBFS)

BELGA RADAR 374.400 129.325		FLORENNES APP 372.275 124.380		FLORENNES TWR 234.800 125.880		FLORENNES GND 308.775 122.100	
TACAN BFS CH 52X	APP COURSE 264°	FAF ALT 2500 FT	DESCENT GR 4.8%(2.75°)	MDA 1310	THR 903 FT	ALS 210 M	LDA 5987 FT



S-ALS	THR 903	5.3	TCH 50 FT
CATEGORY	A - B		C - D
S-TAC 26L	1310 - 1.5 407 (500 - 1.5 / 2.6)		1310 - 2.4 407 (500 - 2.4 / 2.6)
CIRCLING	1540 - 1.6 613 (700 - 1.6)		1640 - 3.6 713 (800 - 3.6)

TACAN RWY 26L 50°14.60' N
004°38.74' E **FLORENNES (EBFS)**

5-23

CHANGES: Background added

BEL DEFENCE, AIR COMPONENT 04-NOV-2021 - THS