

MIPS
INSTRUMENT APPROACH CHART

QRA HPMA-TACAN RWY 26L
FLORENNES (EBFS)

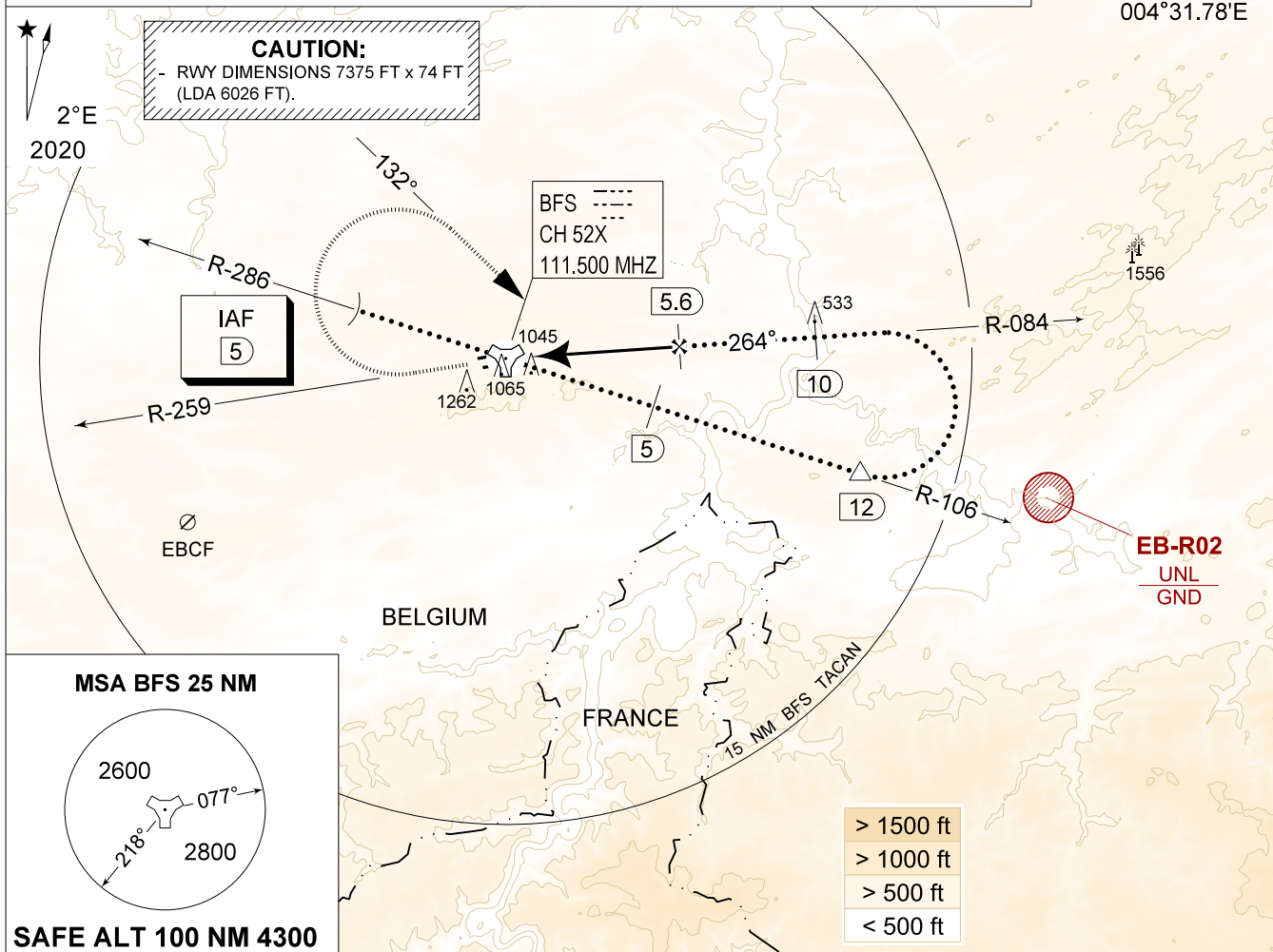
AD ELEV 927

BELGA RADAR		FLORENNES APP		FLORENNES TWR		FLORENNES GND	
374.400	129.325	372.275	124.380	234.800	125.880	356.925	122.100
TACAN	APP COURSE	FAF ALT	DESCENT GR	MDA	THR	ALS	LDA
BFS CH 52X	264°	2500 FT	4.8%(2.75°)	1340	903 FT	210 M	6026 FT

WARNING:

a) ONLY TO BE USED FOR QRA RECOVERY OUTSIDE MIL FLYING HOURS OF FOR TRG PURPOSES OF HOMEBASE AIRCRAFT AFTER PRIOR COORDINATION WITH ATC.

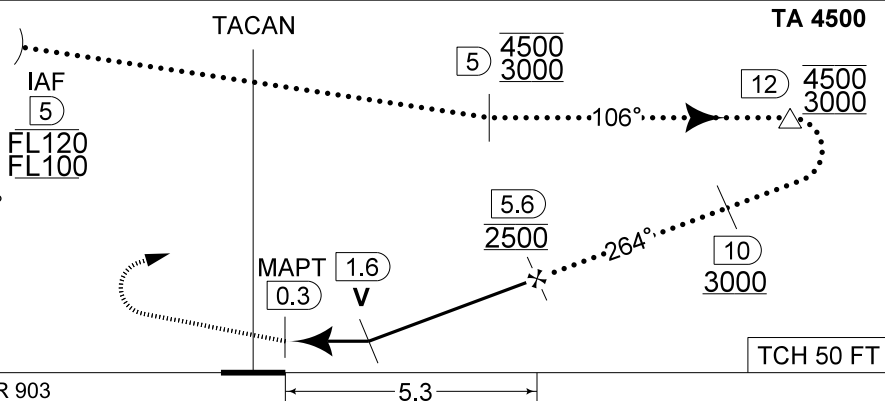
IAF
50°16.02'N
004°31.78'E



DME BFS	5	4	3	2
Altitude	2340	2040	1750	1460
Height	(1440)	(1140)	(850)	(560)

MISSED APPROACH

Climb to 2000 FT on R-259. Passed 2.5 DME TACAN, continue the climb to 3000 FT and turn right on track 132° at MAX300 KIAS to intercept IAF TACAN RWY 26L.



S-ALS [Symbol] THR 903 5.3 TCH 50 FT

CATEGORY	HPMA
S-TAC 26L	1340 - 2.3 437 (500 - 2.3 / 2.5)
CIRCLING	1560 - 3.2 633 (700 - 3.2)

QRA HPMA-TACAN RWY 26L

50°14.60' N
004°38.74' E

FLORENNES (EBFS)

CHANGES: EB-R02 updated

BEL DEFENCE, AIR COMPONENT 25-JAN-2024 - THIS