

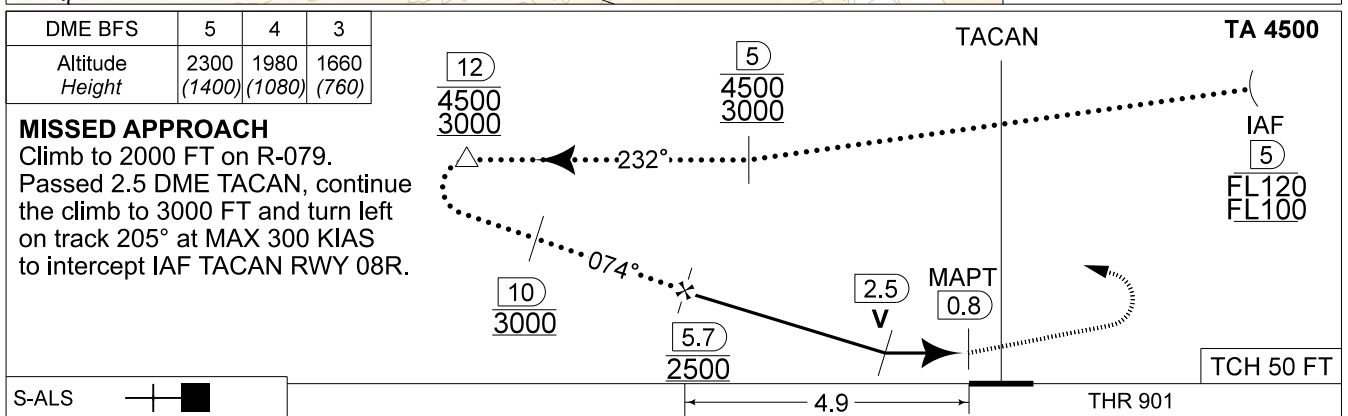
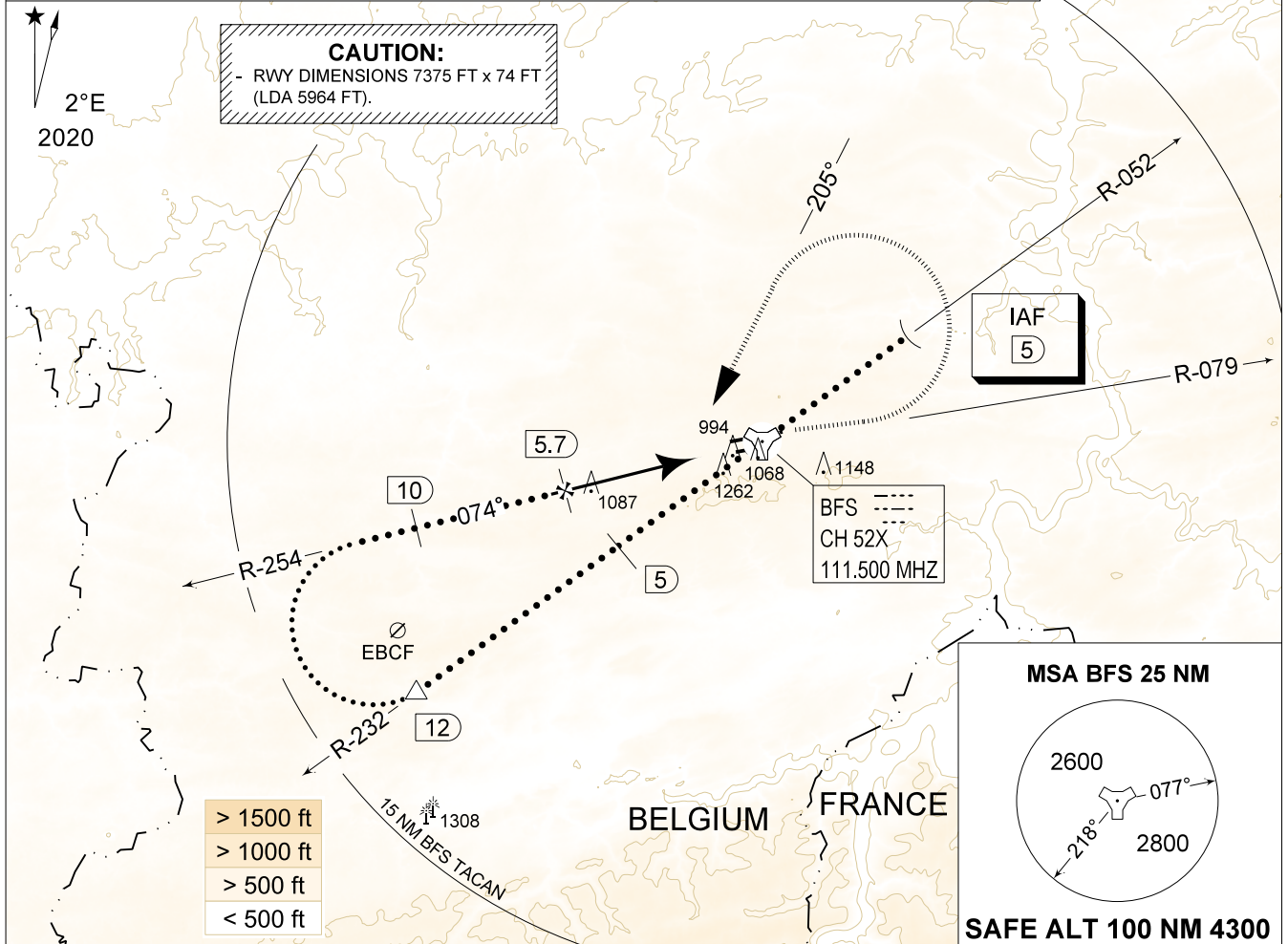
MIPS
INSTRUMENT APPROACH CHART

AD ELEV 927

QRA HPMA-TACAN RWY 08R
FLORENNES (EBFS)

BELGA RADAR		FLORENNES APP		FLORENNES TWR		FLORENNES GND	
374.400	129.325	372.275	124.380	234.800	125.880	356.925	122.100
TACAN	APP COURSE	FAF ALT	DESCENT GR	MDA	THR	ALS	LDA
BFS CH 52X	074°	2500 FT	5.2%(3.00°)	1480	901 FT	335 M	5964 FT

WARNING:
a) ONLY TO BE USED FOR QRA RECOVERY OUTSIDE MIL FLYING HOURS OF FOR TRG PURPOSES OF HOMEBASE AIRCRAFT AFTER PRIOR COORDINATION WITH ATC.



S-ALS	+	■
CATEGORY	HPMA	
S-TAC 08R	1480 - 2.4 579 (600 - 2.4 / 3.1)	
CIRCLING	1560 - 3.2 633 (700 - 3.2)	

QRA HPMA-TACAN RWY 08R 50°14.60' N
004°38.74' E **FLORENNES (EBFS)**

BEL DEFENCE, AIR COMPONENT 02-NOV-2023 - THS