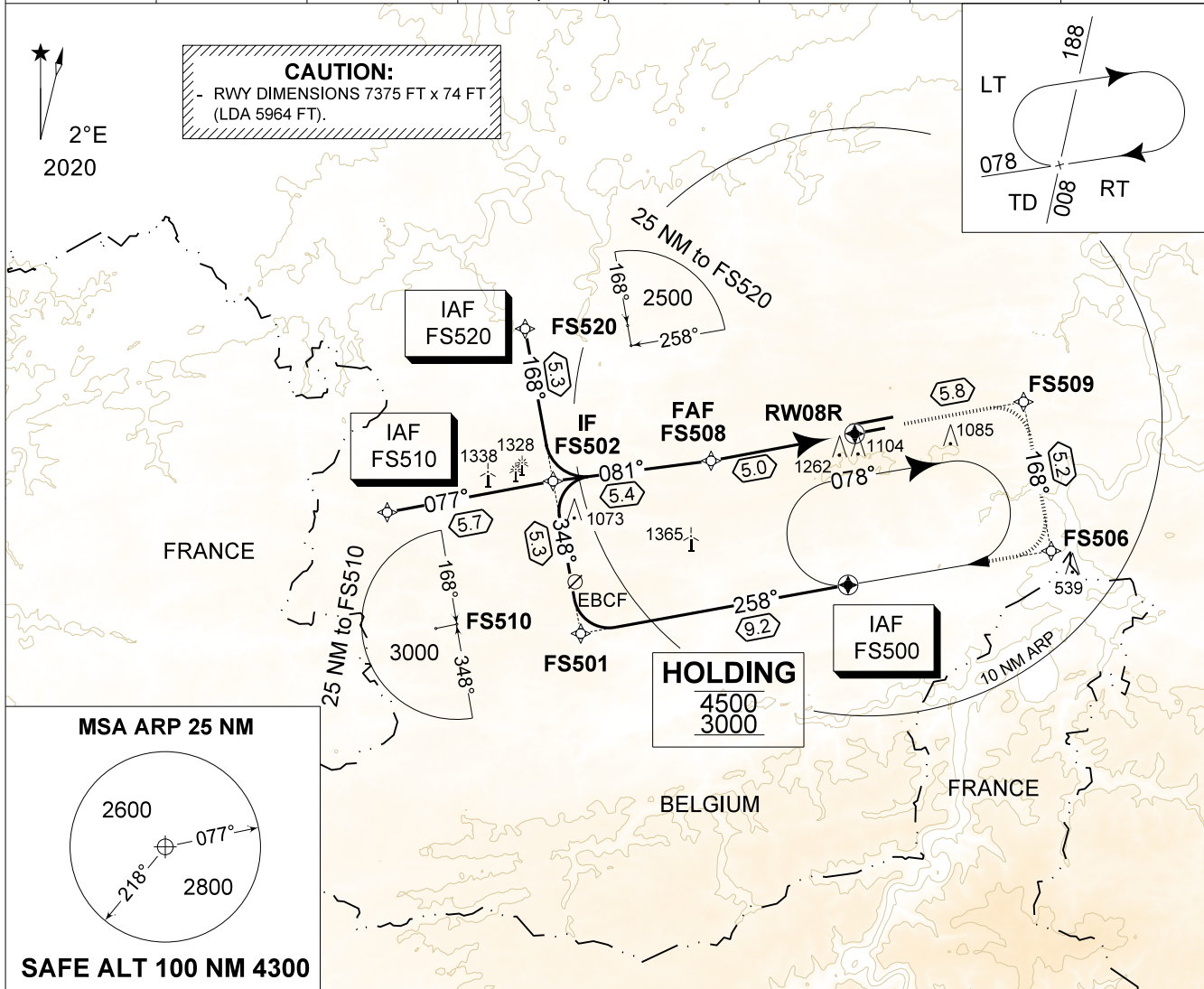


**MIPS**  
**INSTRUMENT APPROACH CHART**

AD ELEV 927

**RNP RWY 08R (LNAV)**  
**FLORENNES (EBFS)**

|             |            |               |              |               |         |               |         |
|-------------|------------|---------------|--------------|---------------|---------|---------------|---------|
| BELGA RADAR |            | FLORENNES APP |              | FLORENNES TWR |         | FLORENNES GND |         |
| 374.400     | 129.325    | 372.275       | 124.380      | 234.800       | 125.880 | 356.925       | 122.100 |
| -           | APP COURSE | FAF ALT       | DESCENT GR   | MDA           | THR     | ALS           | LDA     |
| -           | 077°       | 2500 FT       | 5.24%(3.00°) | 1380          | 901 FT  | 335 M         | 5964 FT |



|          |        |        |       |                    |              |              |
|----------|--------|--------|-------|--------------------|--------------|--------------|
| THR 08L  | 4      | 3      | 2     |                    |              | TA 4500      |
| Altitude | 2230   | 1910   | 1590  | IAF FS520 or FS510 | FS501        | IAF FS500    |
| Height   | (1330) | (1010) | (690) | 4500<br>3000       | 4500<br>3000 | 4500<br>3000 |

**MISSED APPROACH**  
**MAX 190 KIAS**  
Climb inbound FS509 then FS506 to reach IAF FS500 at 3000 FT.

S-ALS 5.00 THR 901 TCH 50 FT GS 3.00°

|                |   |                                  |   |   |
|----------------|---|----------------------------------|---|---|
| CATEGORY       | A | B                                | C | D |
| LNAV 08R (MDA) |   | 1380 - 2.2 479 (500 - 2.2 / 2.5) |   |   |
| CIRCLING       |   | 1660 - 3.6 733 (800 - 3.6)       |   |   |

**RNP RWY 08R (LNAV)** 50°14.60' N  
004°38.74' E **FLORENNES (EBFS)**

CHANGES: GROUND FREQ updated

BEL DEFENCE, AIR COMPONENT 07-SEP-2023 - THS