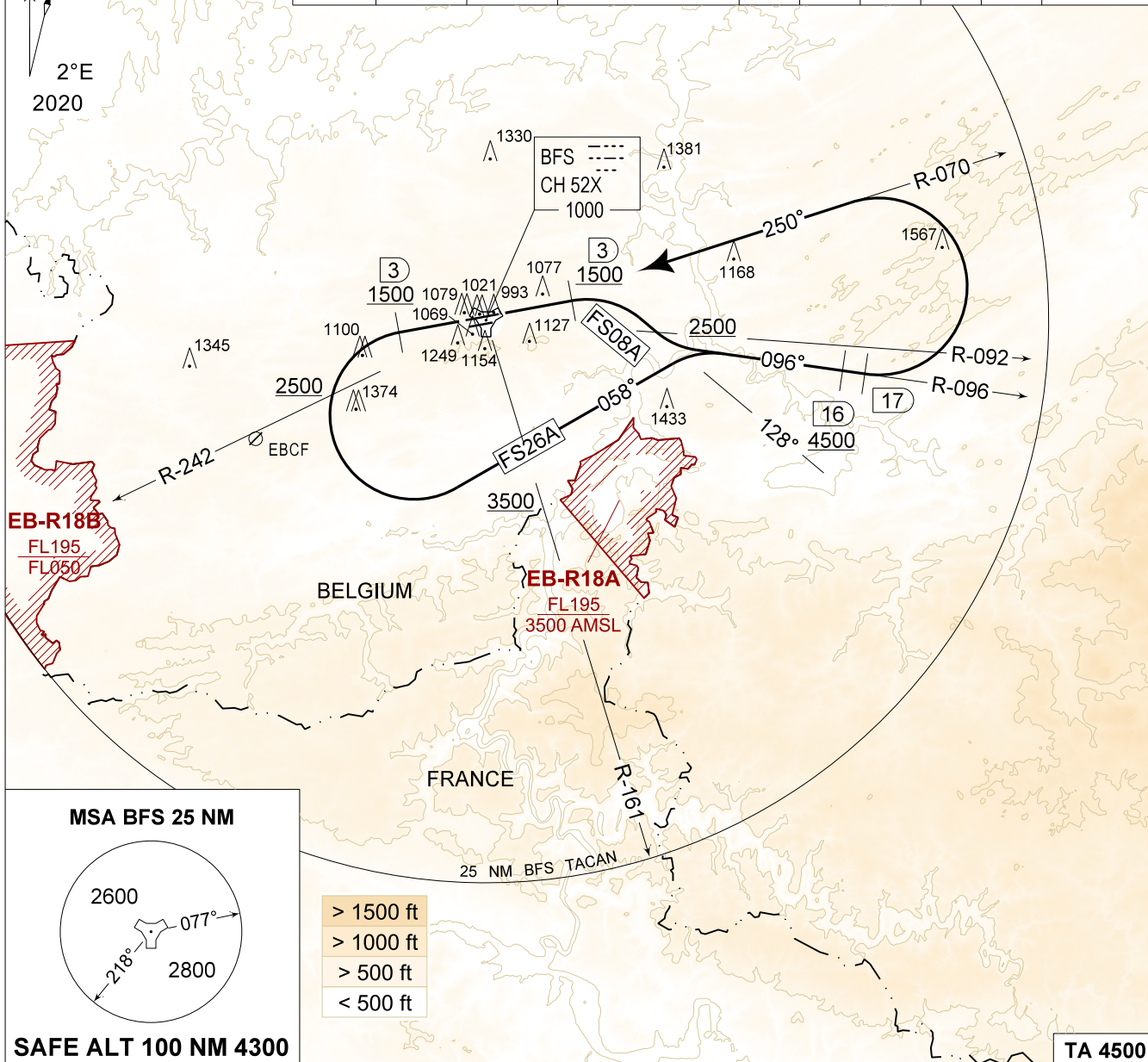


**MIPS**  
**INSTRUMENT DEPARTURE CHART**

AD ELEV 927

**FS 08A - 26A**  
**FLORENNES (EBFS)**

|                                  |                                  |              |                                  |                       |                                |            |             |             |             |                      |
|----------------------------------|----------------------------------|--------------|----------------------------------|-----------------------|--------------------------------|------------|-------------|-------------|-------------|----------------------|
| FLORENNES GND<br>356.925 122.100 | FLORENNES TWR<br>234.800 125.880 |              | FLORENNES APP<br>372.275 124.380 |                       | BELGA RADAR<br>374.400 129.325 |            |             |             |             |                      |
| TACAN<br>BFS - CH 52X            | RWY<br><b>08</b>                 | PDG<br>4.46% | 2.55°                            | From-To<br>DER - 2500 | 120<br>550                     | 180<br>820 | 240<br>1090 | 300<br>1360 | 360<br>1630 | Reason<br><b>ATC</b> |
|                                  | <b>26</b>                        | 4.67%        | 2.67°                            | DER - 2500            | 570                            | 860        | 1140        | 1420        | 1710        | <b>ATC</b>           |



|                                     |   |
|-------------------------------------|---|
| <p>FS 08A<br/>(RWY 08)<br/>(50)</p> | <ul style="list-style-type: none"> <li>- Climb straight ahead and contact EBFS APP.</li> <li>- At 3 DME at or above 1500 FT AMSL, turn right on track 128°.</li> <li>- Pass R-092 at or above 2500 FT AMSL. Intercept R-096 outbound BFS TACAN.</li> <li>- Pass 16 DME / R-096 at or above 4500 FT AMSL. Contact BELGA RADAR as directed.</li> <li>- At 17 DME turn left to intercept R-070 inbound BFS TACAN.</li> <li>- SID is terminated overhead BFS.</li> </ul>  |
| <p>FS 26A<br/>(RWY 26)<br/>(63)</p> | <ul style="list-style-type: none"> <li>- Climb straight ahead and contact EBFS APP.</li> <li>- At 3 DME at or above 1500 FT AMSL, turn left on track 058°.</li> <li>- Pass R-242 at or above 2500 FT AMSL.</li> <li>- Pass R-161 at or above 3500 FT AMSL, intercept R-096 outbound BFS TACAN.</li> <li>- Pass 16 DME / R-096 at or above 4500 FT AMSL. Contact BELGA RADAR as directed.</li> <li>- At 17 DME turn left to intercept R-070 inbound BFS TACAN.</li> <li>- SID is terminated overhead BFS.</li> </ul> |

**FS 08A - 26A**

50°14.60' N  
004°38.74' E

**FLORENNES (EBFS)**

CHANGES: GROUND FREQ updated

BEL DEFENCE, AIR COMPONENT 07-SEP-2023 - THS