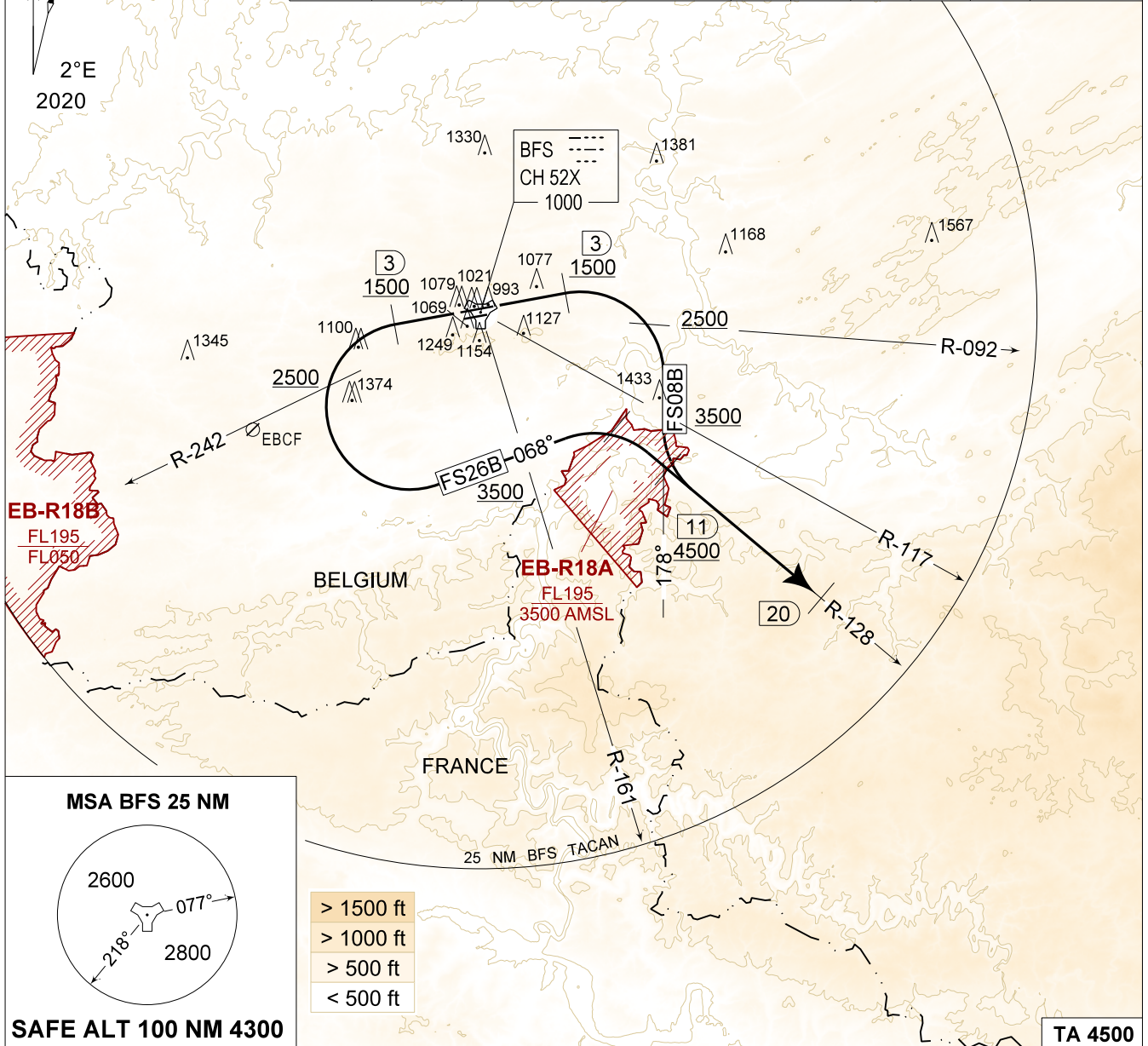


**MIPS**  
**INSTRUMENT DEPARTURE CHART**

AD ELEV 927

**FS 08B - 26B**  
**FLORENNES (EBFS)**

FLORENNES GND 356.925 122.100	FLORENNES TWR 234.800 125.880		FLORENNES APP 372.275 124.380		BELGA RADAR 374.400 129.325					
TACAN BFS - CH 52X	RWY <b>08</b>	PDG 4.46%	2.55°	From-To DER - 4500	120 550	180 820	240 1090	300 1360	360 1630	Reason <b>ATC</b>
	<b>26</b>	4.67%	2.67°	DER - 2500	570	860	1140	1420	1710	<b>ATC</b>



<p>FS 08B (RWY 08) (22)</p>	<ul style="list-style-type: none"> <li>- Climb straight ahead and contact EBFS APP.</li> <li>- At 3 DME at or above 1500 FT AMSL, turn right on track 178°.</li> <li>- Pass R-092 at or above 2500 FT AMSL.</li> <li>- Pass R-117 at or above 3500 FT AMSL.</li> <li>- Intercept R-128 outbound BFS TACAN.</li> <li>- Pass 11 DME / R-128 at or above 4500 FT AMSL.</li> <li>- Contact BELGA RADAR as directed. Continue R-128 outbound till 20 DME BFS TACAN.</li> </ul>
<p>FS 26B (RWY 26) (31)</p>	<ul style="list-style-type: none"> <li>- Climb straight ahead and contact EBFS APP.</li> <li>- At 3 DME at or above 1500 FT AMSL, turn left on track 068°.</li> <li>- Pass R-242 at or above 2500 FT AMSL.</li> <li>- Pass R-161 at or above 3500 FT AMSL.</li> <li>- Intercept R-128 outbound BFS TACAN.</li> <li>- Pass 11 DME / R-128 at or above 4500 FT AMSL.</li> <li>- Contact BELGA RADAR as directed. Continue R-128 outbound till 20 DME BFS TACAN.</li> </ul>

**FS 08B - 26B**

50°14.60' N  
004°38.74' E

**FLORENNES (EBFS)**

CHANGES: GROUND FREQ updated

BEL DEFENCE, AIR COMPONENT 07-SEP-2023 - THS