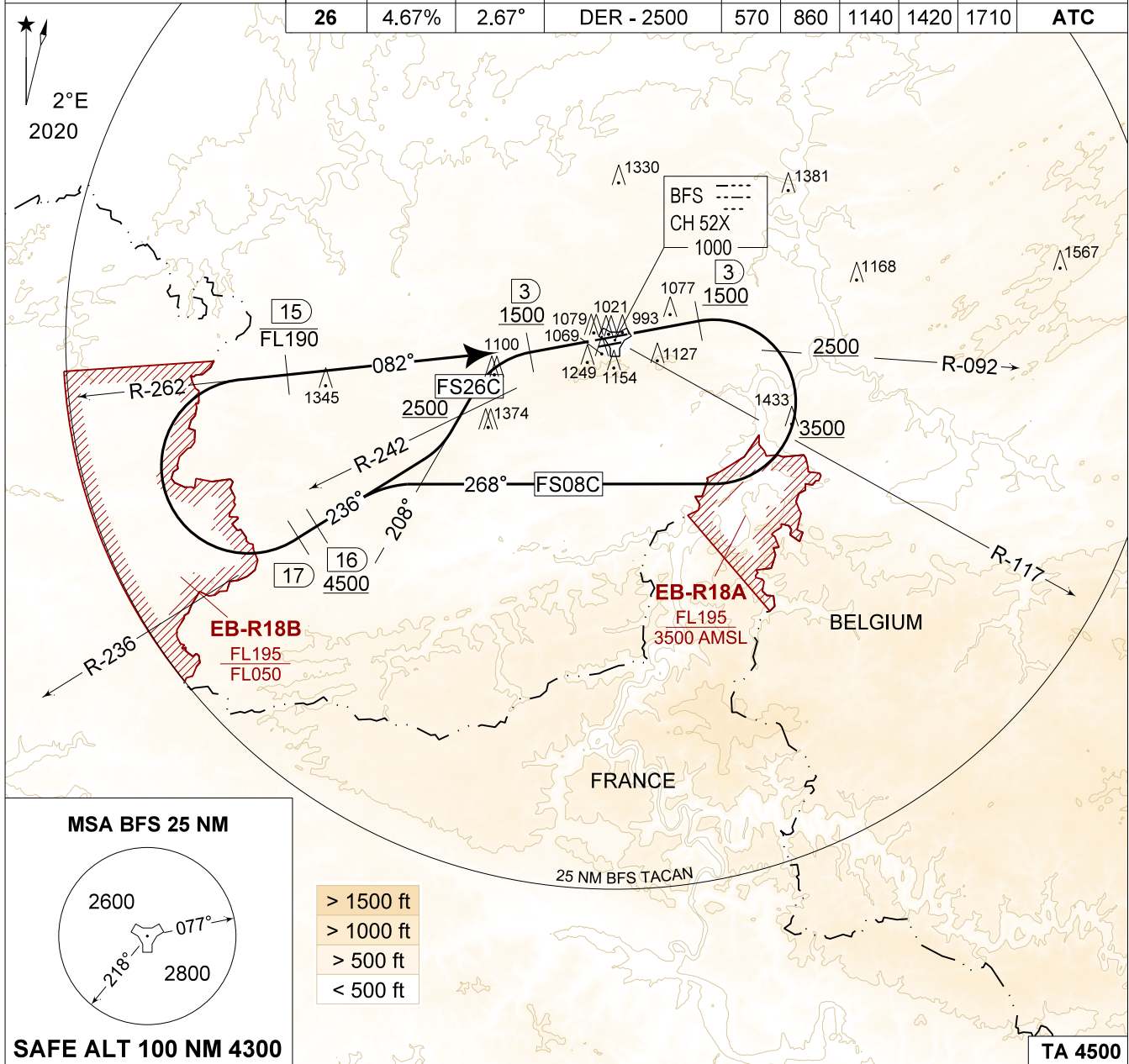


MIPS
INSTRUMENT DEPARTURE CHART

AD ELEV 927

FS 08C - 26C
FLORENNES (EBFS)

FLORENNES GND 356.925 122.100		FLORENNES TWR 234.800 125.880		FLORENNES APP 372.275 124.380		BELGA RADAR 374.400 129.325					
TACAN BFS - CH 52X		RWY	PDG	From-To	120	180	240	300	360	Reason	
		08	4.46%	2.55°	DER - 3500	550	820	1090	1360	1630	ATC
		26	4.67%	2.67°	DER - 2500	570	860	1140	1420	1710	ATC



<p>FS 08C (RWY 08) 65</p>	<ul style="list-style-type: none"> - Climb straight ahead and contact EBFS APP. - At 3 DME at or above 1500 FT AMSL, turn right on track 268°. - Pass R-092 at or above 2500 FT AMSL. - Pass R-117 at or above 3500 FT AMSL. Intercept R-236 outbound BFS TACAN. - Pass 16 DME / R-236 at or above 4500 FT AMSL. Contact BELGA RADAR as directed. - At 17 DME turn right to intercept R-262 inbound BFS TACAN. - Pass 15 DME / R-262 at or below FL190. Proceed overhead BFS.
<p>FS 26C (RWY 26) 51</p>	<ul style="list-style-type: none"> - Climb straight ahead and contact EBFS APP. - At 3 DME at or above 1500 FT AMSL, turn left on track 208°. - Pass R-242 at or above 2500 FT AMSL. - Intercept R-236 outbound BFS TACAN. - Pass 16 DME / R-236 at or above 4500 FT AMSL. Contact BELGA RADAR as directed. - At 17 DME turn right to intercept R-262 inbound BFS TACAN. - Pass 15 DME / R-262 at or below FL190. Proceed overhead BFS.

FS 08C - 26C

50°14.60' N
004°38.74' E

FLORENNES (EBFS)

CHANGES: GROUND FREQ updated

BEL DEFENCE, AIR COMPONENT 07-SEP-2023 - THS