

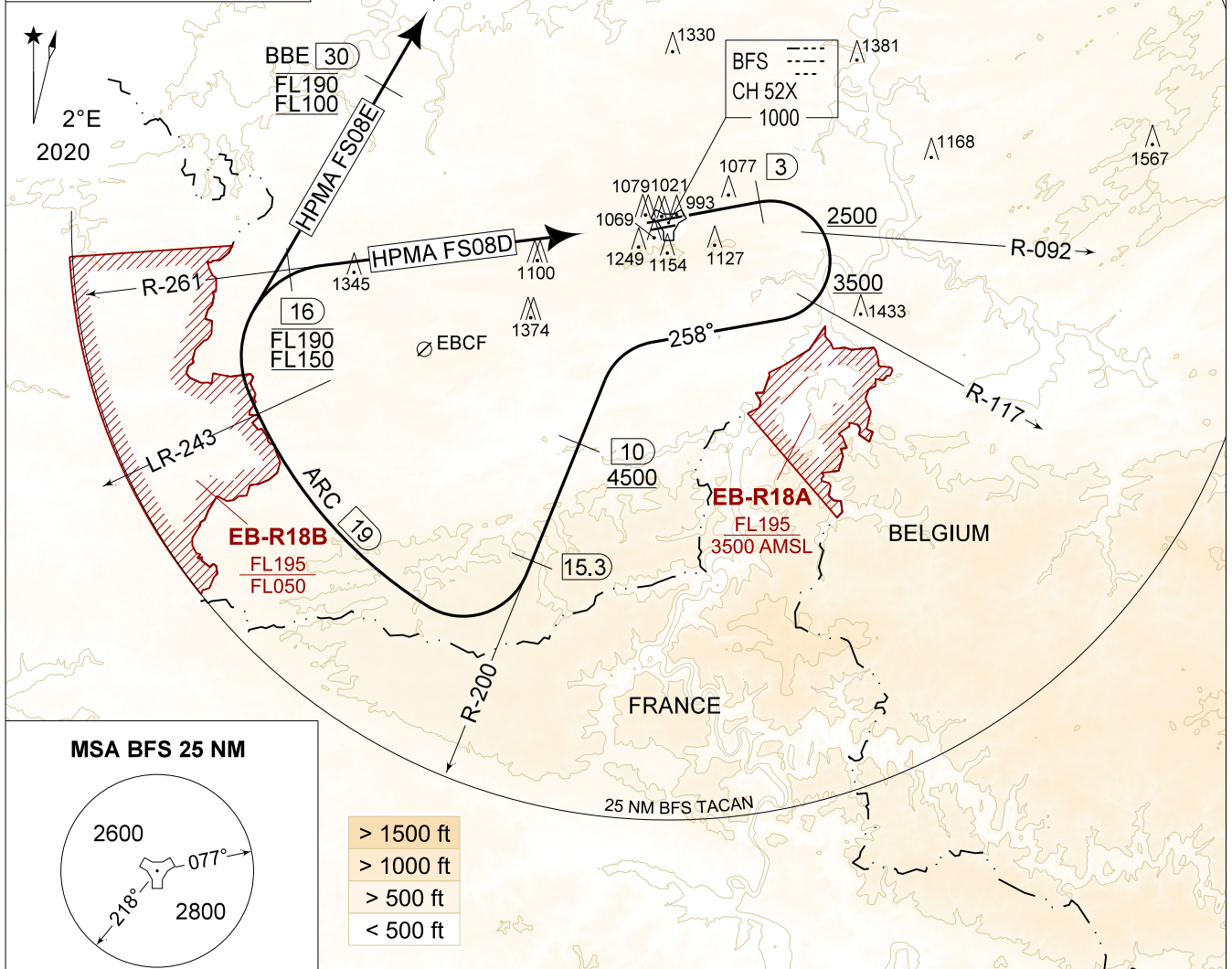
MIPS
INSTRUMENT DEPARTURE CHART

AD ELEV 927

HPMA FS 08D - 08E
FLORENNES (EBFS)

FLORENNES GND 356.925 122.100	FLORENNES TWR 234.800 125.880		FLORENNES APP 372.275 124.380		BELGA RADAR 374.400 129.325				
TACAN BFS - CH 52X	RWY 08	PDG 8.75% 5.00°	From-To DER - 15.3/R-201	120 1070	180 1600	240 2130	300 2660	360 3190	Reason ATC
TACAN BBE - CH 107X									

NOTE:
a) MAX 300 KT IAS.



MSA BFS 25 NM

SAFE ALT 100 NM 4300

- > 1500 ft
- > 1000 ft
- > 500 ft
- < 500 ft

<p>HPMA FS 08D (RWY 08) 62</p>	<ul style="list-style-type: none"> - Climb straight ahead and contact EBFS APP. - At 3 DME turn right on track 258° to intercept R-200 outbound. - Pass R-092 at or above 2500 FT AMSL and R-117 at or above 3500 FT AMSL. - Pass 10 DME / R-200 at 4500 FT AMSL or above. - Contact BELGA RADAR passing 4500 FT AMSL. - Turn right on the 19 DME arc to intercept R-261 inbound. - Pass 16 DME / R-261 between FL150 and FL190. Climb as directed.
<p>HPMA FS 08E (RWY 08) 58</p>	<ul style="list-style-type: none"> - Climb straight ahead and contact EBFS APP. - At 3 DME turn right on track 258° to intercept R-200 outbound. - Pass R-092 at or above 2500 FT AMSL and R-117 at or above 3500 FT AMSL. - Pass 10 DME / R-200 at 4500 FT AMSL or above. - Contact BELGA RADAR passing 4500 FT AMSL. - Turn right on the 19 DME arc to intercept BBE R-212 inbound. - Pass BBE 30 DME / R-212 between FL100 and FL190. Climb as directed.

HPMA FS 08D - 08E 50°14.60' N
004°38.74' E **FLORENNES (EBFS)**

BEL DEFENCE, AIR COMPONENT 07-SEP-2023 - THS