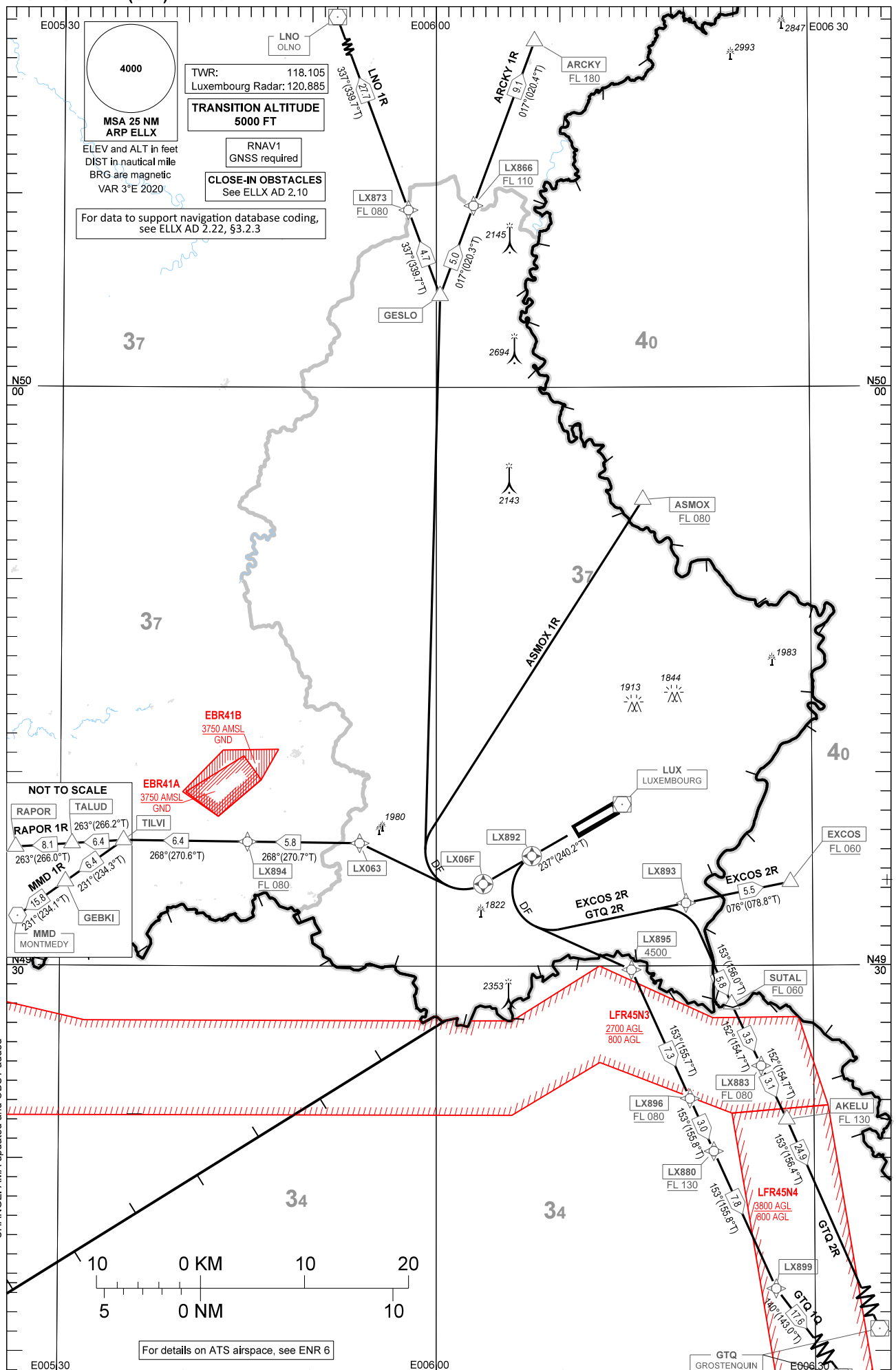


STANDARD DEPARTURE CHART - INSTRUMENT (SID) - ICAO

ARCKY 1R ASMOX 1R EXCOS 2R
GTQ 1Q-2R MMD 1R RAPOR 1R LNO 1R

LUXEMBOURG / Luxembourg (ELLX)

RNAV RWY 24



4000
MSA 25 NM
ARP ELLX

TWR: 118.105
Luxembourg Radar: 120.885
TRANSITION ALTITUDE
5000 FT

RNAV1
GNSS required

CLOSE-IN OBSTACLES
See ELLX AD 2.10

ELEV and ALT in feet
DIST in nautical mile
BRG are magnetic
VAR 3°E 2020

For data to support navigation database coding,
see ELLX AD 2.22, §3.2.3

NOT TO SCALE

| | |
|---------------|---------------|
| RAPOR | TALUD |
| 263°(266.0°T) | 263°(266.2°T) |
| 8.1 | 6.4 |
| 231°(234.1°T) | 231°(234.3°T) |
| 6.4 | 6.4 |
| 268°(270.6°T) | 268°(270.7°T) |
| 5.8 | |
| 231°(234.1°T) | |
| 18.8 | |
| 231°(234.1°T) | |

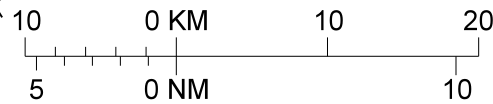
MMD 1R
MONTMEDY

GEBKI

EBR41A
3750 AMSL
GND

EBR41B
3750 AMSL
GND

CHANGE: AIMA updated and OBST added



For details on ATS airspace, see ENR 6