

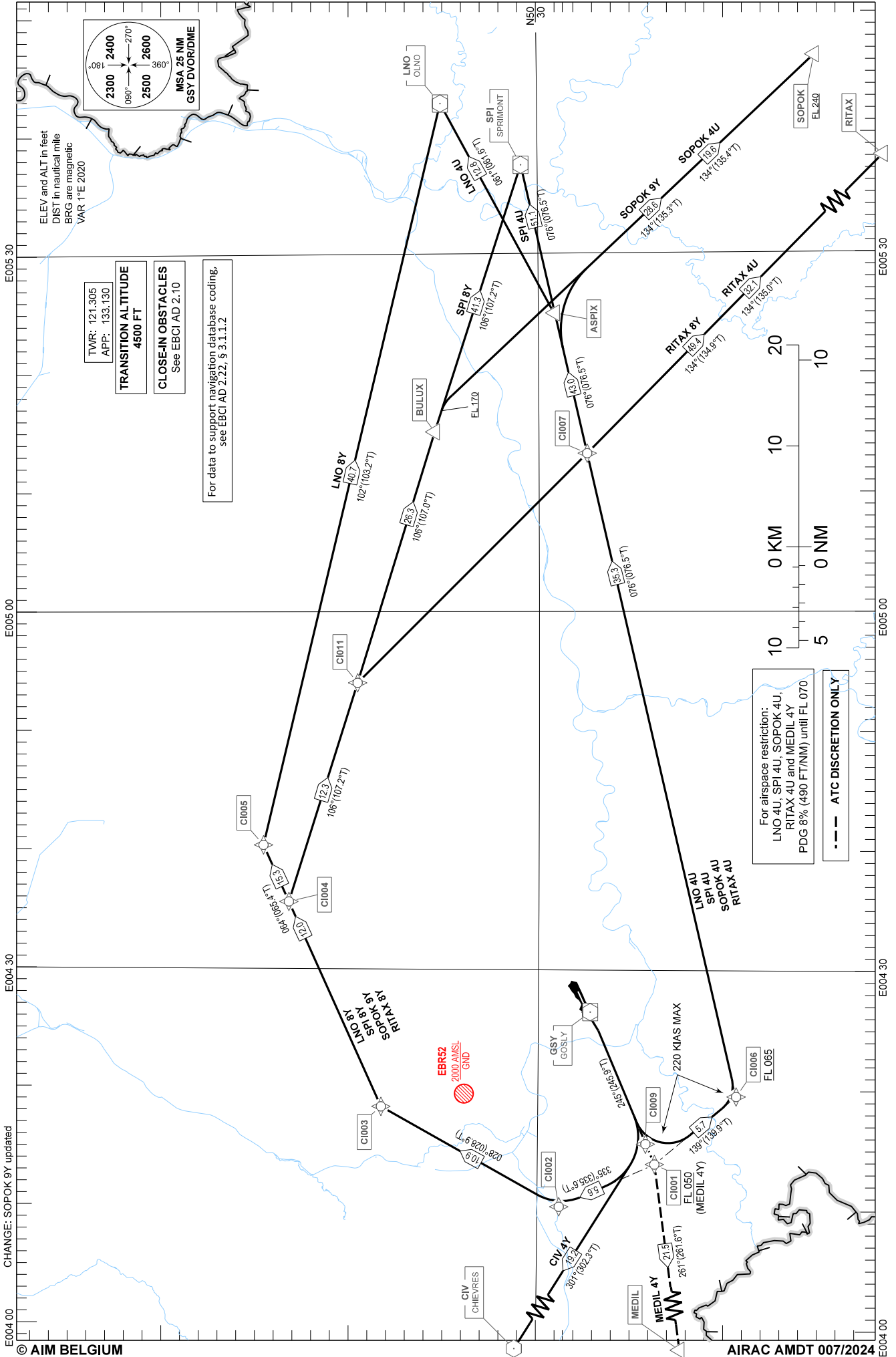
STANDARD DEPARTURE CHART - INSTRUMENT (SID) - ICAO

SOPOK 4U-9Y RITAX 4U-8Y MEDIL 4Y CIV 4Y LNO 4U-8Y SPI 4U-8Y

CHARLEROI / Brussels South (EBCI)

RNAV1 OVERLAY

RWY 24



TWR: 121.305
APP: 133.130

TRANSITION ALTITUDE
4500 FT

CLOSE-IN OBSTACLES
See EBCI AD 2.10

For data to support navigation database coding, see EBCI AD 2.22, § 3.1.1.2

For airspace restriction:
LNO 4U, SPI 4U, SOPOK 4U,
RITAX 4U and MEDIL 4Y
PDG 8% (490 FT/NM) until FL 070

--- ATC DISCRETION ONLY

CHANGE: SOPOK 9Y updated