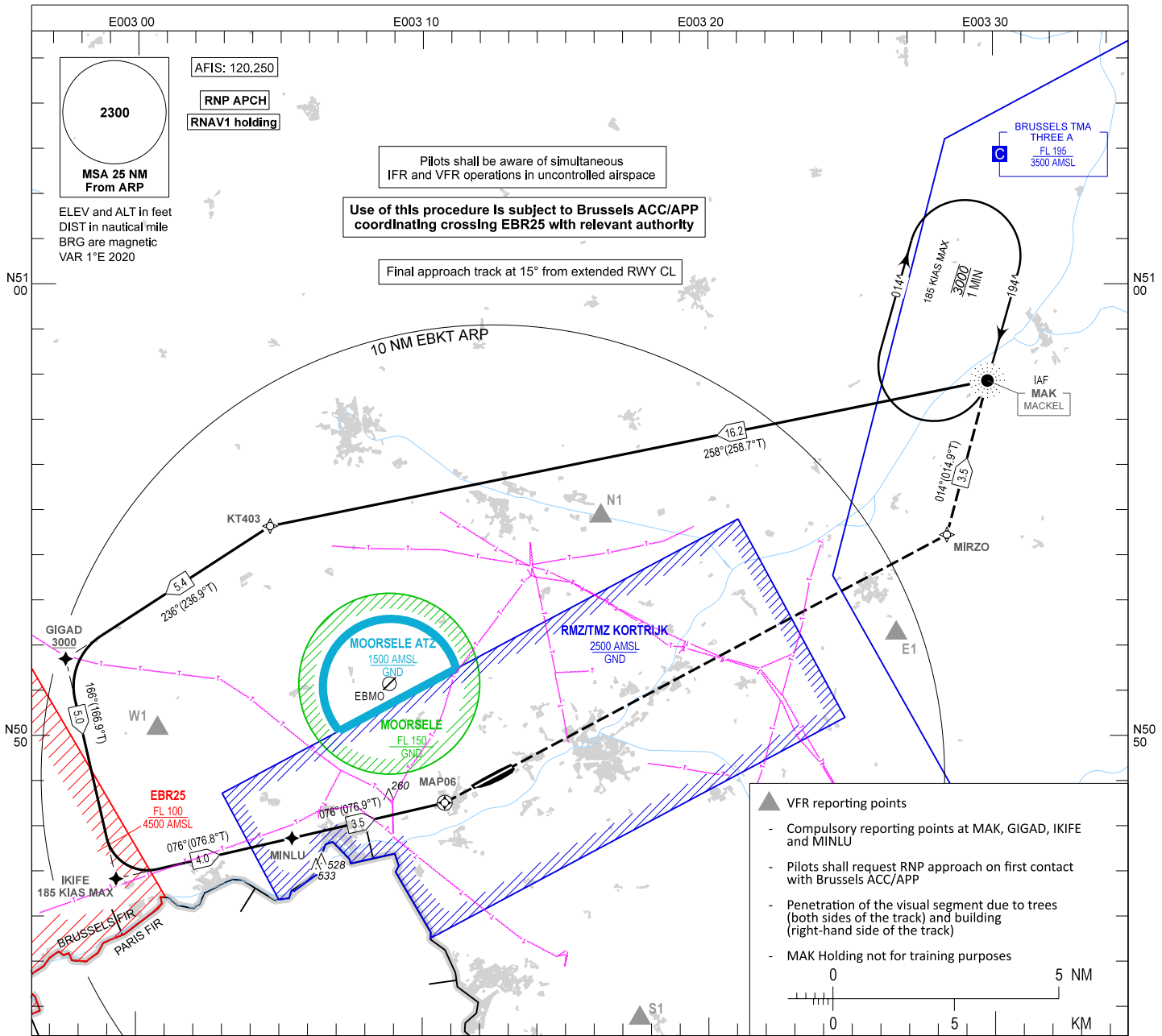


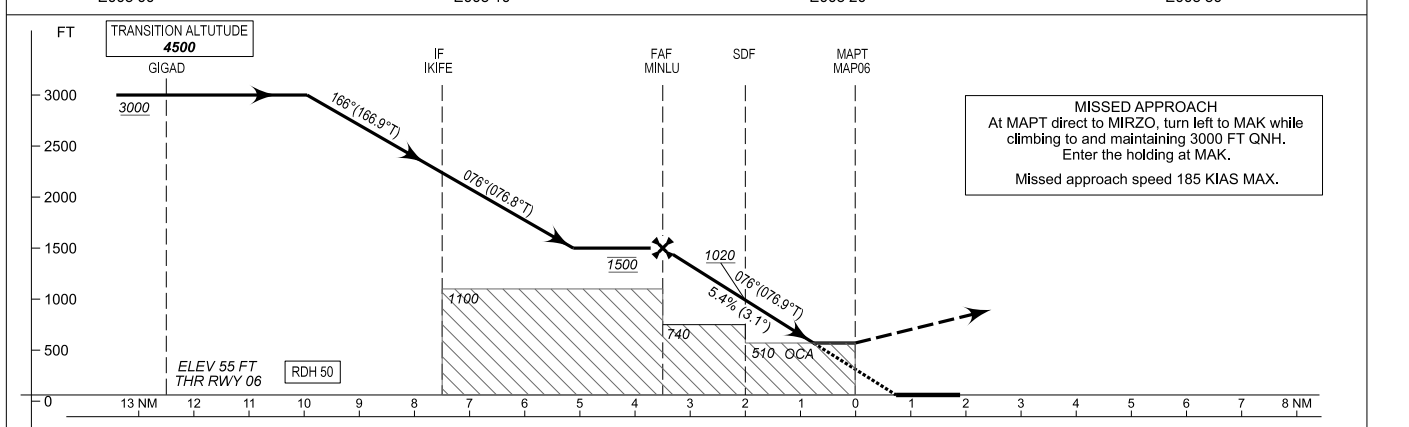
**INSTRUMENT APPROACH CHART - ICAO**

OCH RELATED TO AD ELEV 55

**KORTRIJK / Wevelgem (EBKT)**  
RNP RWY 06



- ▲ VFR reporting points
- Compulsory reporting points at MAK, GIGAD, IKIFE and MINLU
- Pilots shall request RNP approach on first contact with Brussels ACC/APP
- Penetration of the visual segment due to trees (both sides of the track) and building (right-hand side of the track)
- MAK Holding not for training purposes



**MISSED APPROACH**  
At MAPT direct to MIRZO, turn left to MAK while climbing to and maintaining 3000 FT QNH. Enter the holding at MAK.  
Missed approach speed 185 KIAS MAX.

CAT of ACFT	OCA (OCH)			FAF to MAPT - 3.5 NM						
	A	B	C	Speed (GS)	KT	70	90	120	150	
LNAV	510 (460)	510 (460)	510 (460)	Rate of descent	FT/MIN	385	495	660	825	
CIRCLING	Not allowed			<b>PROCEDURE ALTITUDES (HEIGHTS)</b>						
AD OPR MNM: 800 M VIS				DIST MAPT	3.0	SDF 2.0	1.0			
				Altitude (height)	1350 (1290)	1020 (960)	690 (630)			

CHANGE: Minor updates