

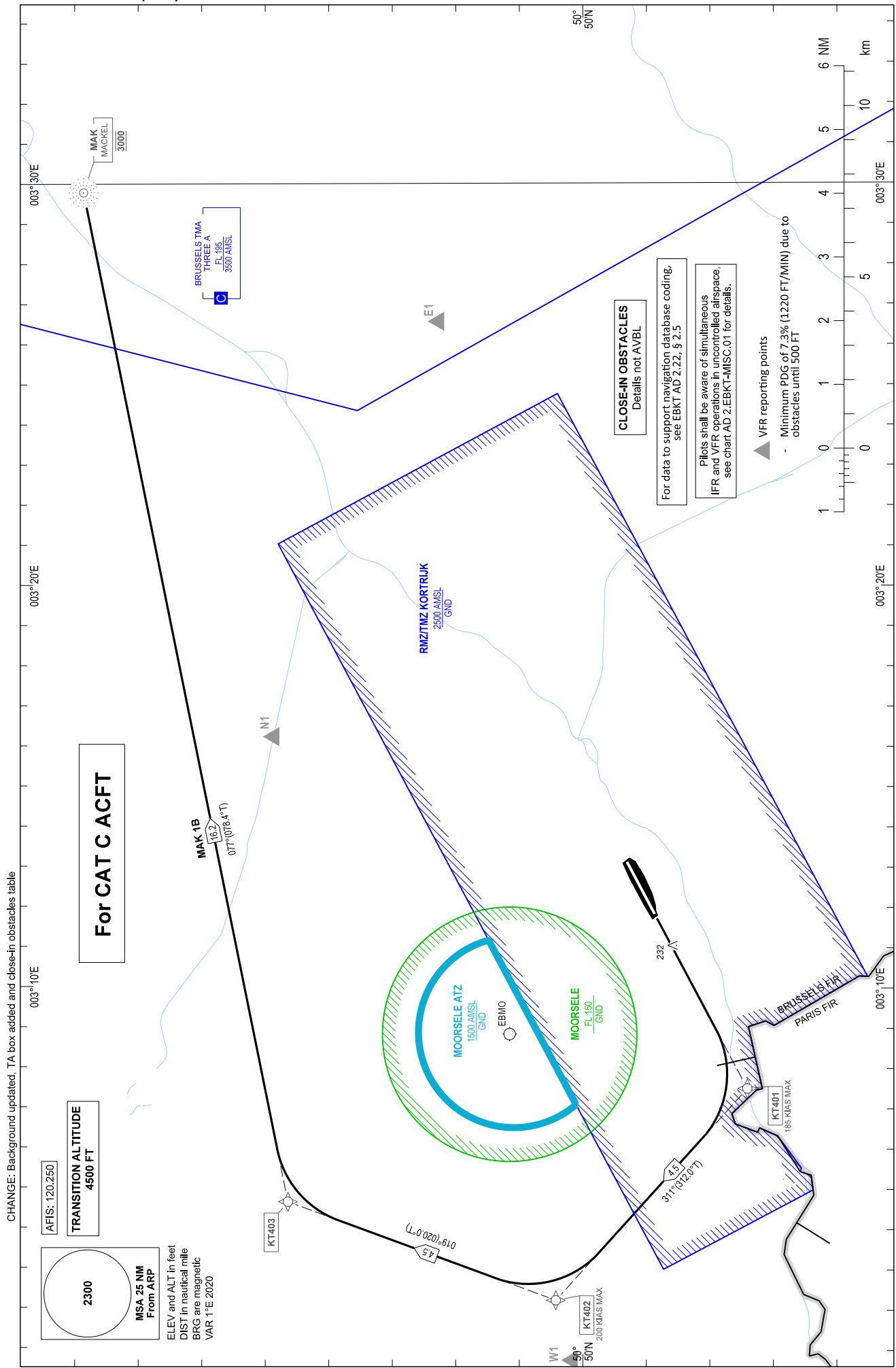
STANDARD DEPARTURE CHART - INSTRUMENT (SID) - ICAO

KORTRIJK / Wevelgem (EBKT)

MAK 1B

RNAV1

RWY 24



CHANGE: Background updated, TA box added and close-in obstacles table

AFIS: 120.250

TRANSITION ALTITUDE
4500 FT

2300
MSA 25 NM
From ARP

ELEV and ALT in feet
DIST in nautical mile
BRG are magnetic
VAR 1°E 2020

For CAT C ACFT

MAK 1B
16.2
077°(078.4°T)

KT403

4.5
019°(020.0°T)

4.5
31°(32.0°T)

232

BRUSSELS TMA
THREE A
FL 195
3500 AMSL

RIMZIJTZ KORTRIJK
2500 AMSL
GND

MOORSELE ATZ
150 AMSL
GND

EBMO

MOORSELE
FL 150
GND

CLOSE-IN OBSTACLES
Details not AVBL

For data to support navigation database coding,
see EBKT AD 2.22, § 2.5

Pilots shall be aware of simultaneous
IFR and VFR operations in uncontrolled airspace,
see chart AD 2.EBKT-MISC.01 for details.

VFR reporting points

Minimum PDG of 7.3% (1220 FT/MIN) due to
obstacles until 500 FT