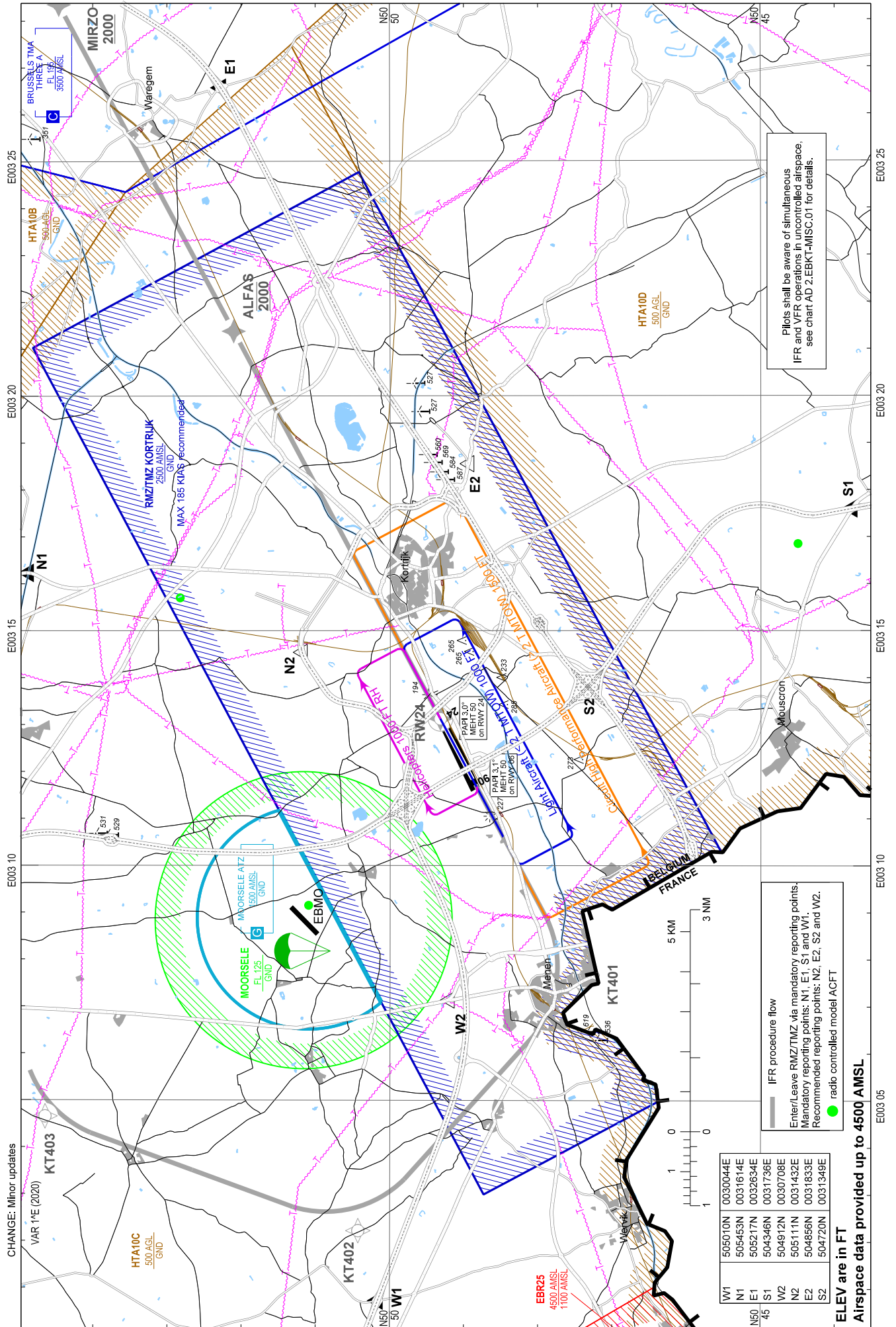


Visual Approach Chart - ICAO

AD ELEV 55
Heights related to AD ELEV

AFIS 120.250

KORTRIJK / Wevelgem (EBKT) RWY 24



Pilots shall be aware of simultaneous IFR and VFR operations in uncontrolled airspace, see chart AD 2.EBKT-MISC.01 for details.

IFR procedure flow

Enter/Leave RMZTMZ via mandatory reporting points.
Mandatory reporting points: N1, E1, S1 and W1.
Recommended reporting points: N2, E2, S2 and W2.
radio controlled model ACFT

W1	505010N	0030044E
N1	505453N	0031614E
E1	505217N	0032634E
S1	504346N	0031736E
W2	504912N	0030708E
N2	505111N	0031432E
E2	504856N	0031833E
S2	504720N	0031349E

ELEV are in FT
Airspace data provided up to 4500 AMSL

CHANGE: Minor updates
VAR 1°E (2020)