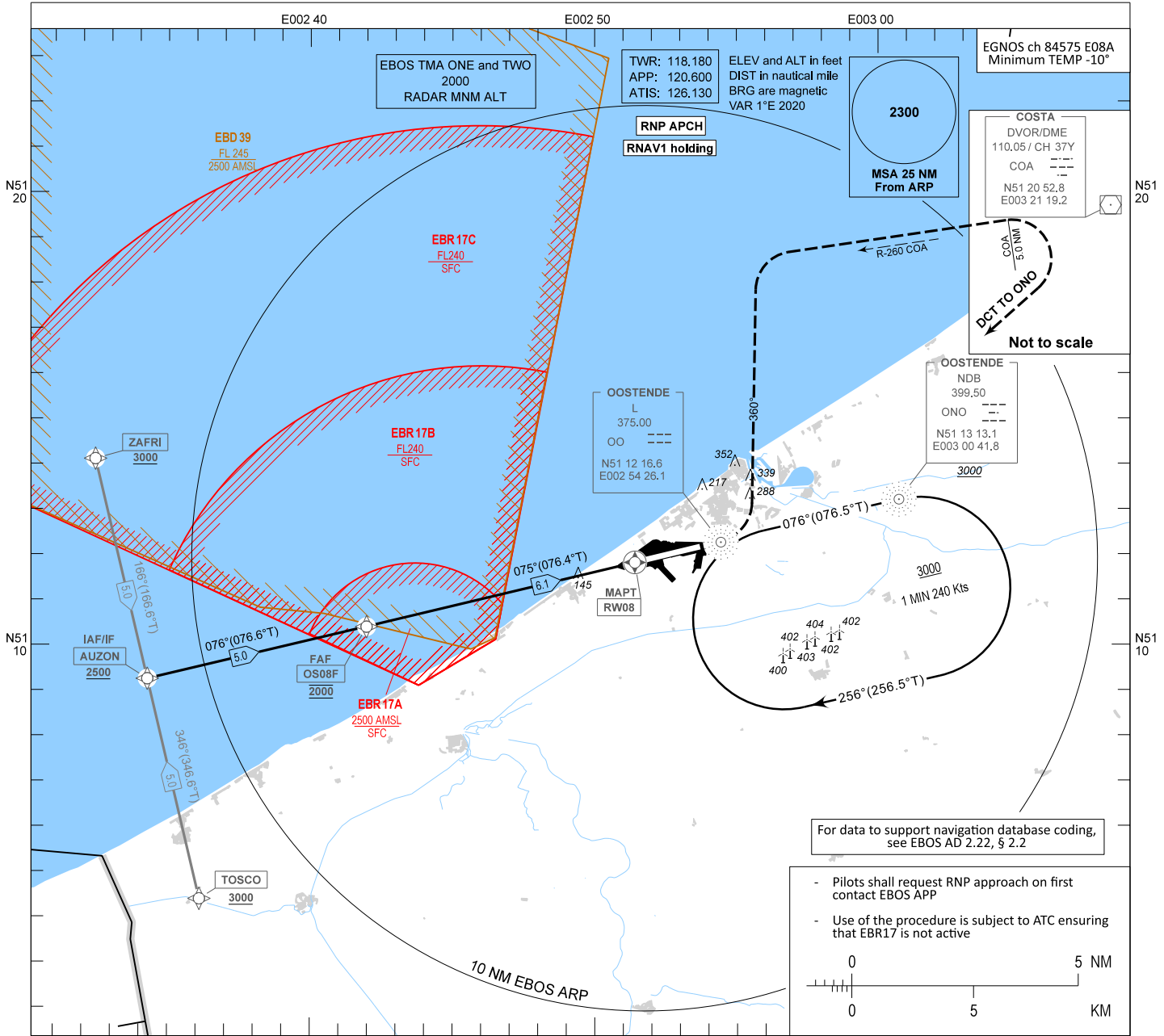


**INSTRUMENT APPROACH CHART - ICAO**

AD ELEV 7  
OCH RELATED TO  
THR RWY 08 - ELEV 7

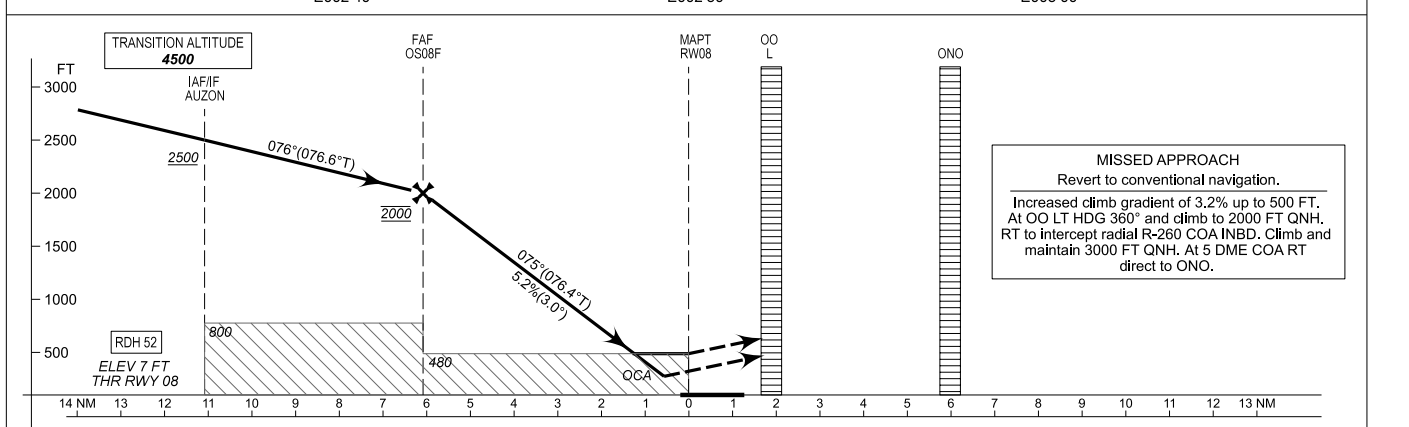
**OOSTENDE-BRUGGE / Oostende (EBOS)**

RNP RWY 08



For data to support navigation database coding, see EBOS AD 2.22, § 2.2

- Pilots shall request RNP approach on first contact EBOS APP
- Use of the procedure is subject to ATC ensuring that EBR17 is not active



CAT of ACFT	OCA (OCH)				FAF to MAPT - 6.1 NM						
	A	B	C	D/DL	Speed (GS)	KT	70	90	120	150	180
LNAV	480 (470)	480 (470)	480 (470)	480 (470)	Rate of descent	FT/MIN	375	480	640	800	960
LNAV/VNAV	269 (262)	279 (272)	288 (281)	298 (291)	PROCEDURE ALTITUDES (HEIGHTS)						
LPV	207 (200)	207 (200)	207 (200)	207 (200)	DIST THR		6.0	5.0	4.0	3.0	2.0
CIRCLING	580 (570)	650 (650)	800 (790)	800 (790)	Altitude		1970	1660	1340	1020	700
					Height		(1970)	(1650)	(1330)	(1010)	(690)

CHANGES: Minor updates