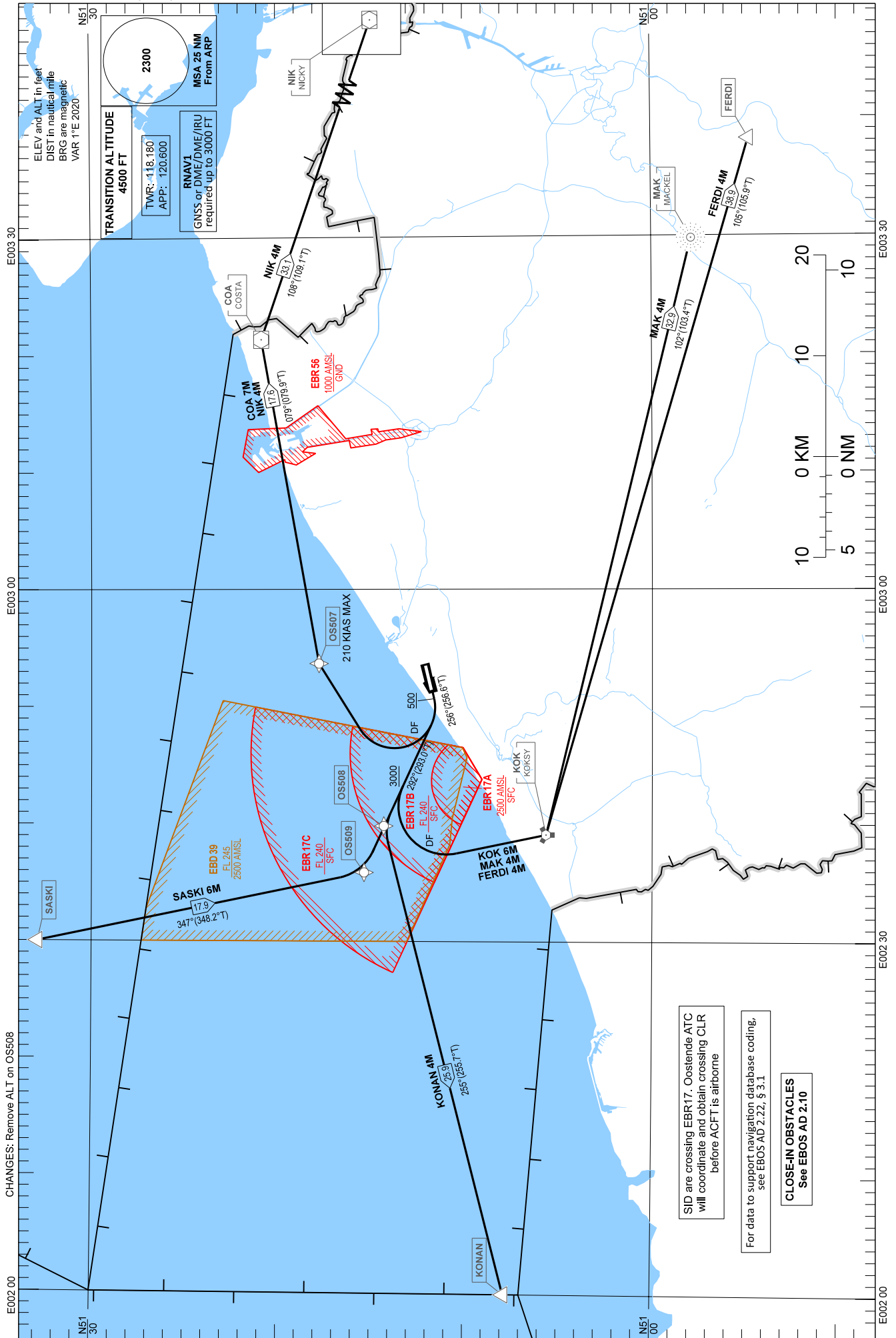


STANDARD DEPARTURE CHART - INSTRUMENT (SID) - ICAO

KONAN 4M COA 7M KOK 6M  
MAK 4M FERDI 4M SASKI 6M NIK 4M

OOSTENDE-BRUGGE / Oostende (EBOS)

RNAV RWY 26



CHANGES: Remove ALT on OS508

SID are crossing EBR17. Oostende ATC will coordinate and obtain crossing CLR before ACFT is airborne

For data to support navigation database coding, see EBOS AD 2.22. § 3.1

CLOSE-IN OBSTACLES See EBOS AD 2.10