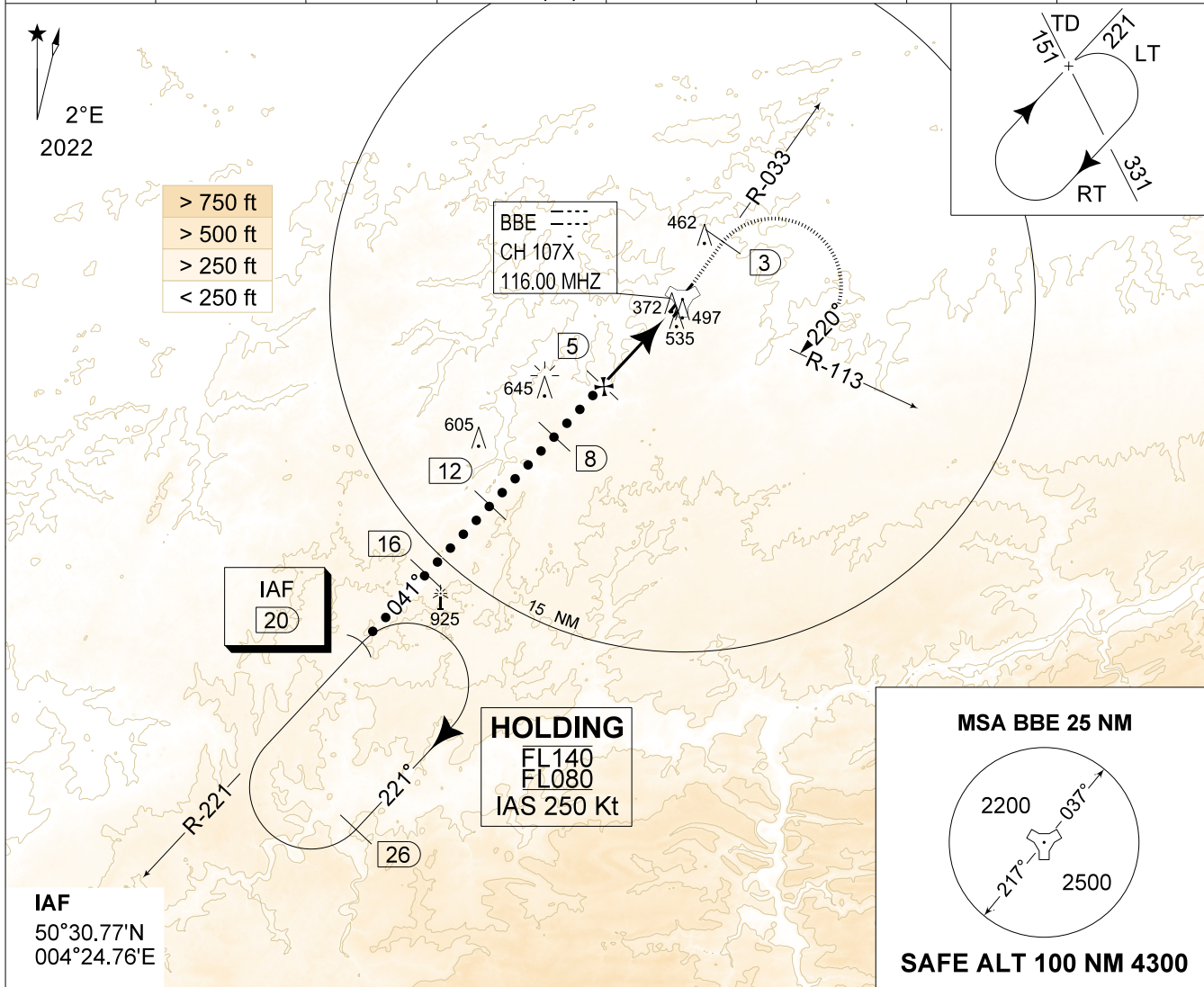


**MIPS**  
**INSTRUMENT APPROACH CHART**

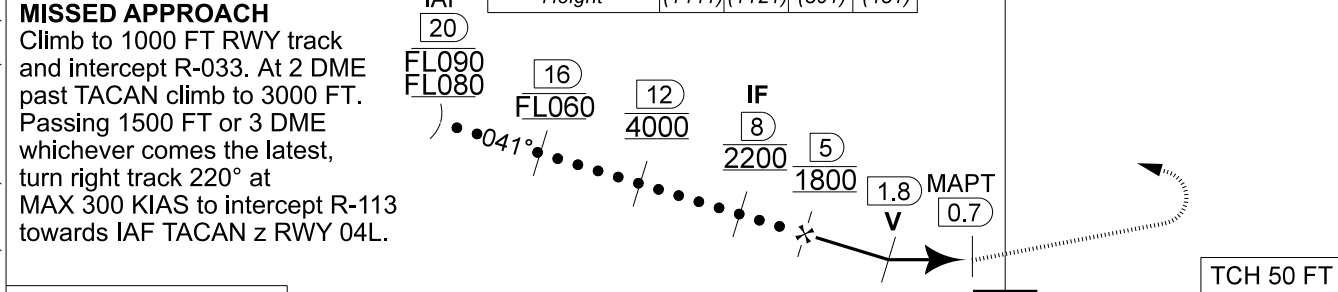
AD ELEV 362

**HPMA TACAN RWY 04L**  
**BEAUVECHAIN (EBBE)**

BELGA RADAR 374.400 129.325		BEAUVECHAIN APP 282.100 122.830		BEAUVECHAIN TWR 362.025 130.730		BEAUVECHAIN GND 359.825 121.855	
TACAN BBE CH107X	APP COURSE 041°	FAF ALT 1800 FT	DESCENT GR 5.24%(3°)	MDA <b>770</b>	THR 349 FT	ALS 930 M	LDA 7959 FT



<b>MISSED APPROACH</b> Climb to 1000 FT RWY track and intercept R-033. At 2 DME past TACAN climb to 3000 FT. Passing 1500 FT or 3 DME whichever comes the latest, turn right track 220° at MAX 300 KIAS to intercept R-113 towards IAF TACAN z RWY 04L.	DME BBE	5	4	3	2	TACAN TA 4500
	Altitude	1790	1470	1150	830	
	Height	(1441)	(1121)	(801)	(481)	



CAT I	4.4	THR 349	TCH 50 FT
-------	-----	---------	-----------

MIPS	CATEGORY	HPMA
	S-TAC 04L	<b>770</b> - 1.3 421 (500 - 1.3 / 2.2)
	S-PAR 04L	<b>549</b> - 0.8 200 (200 - 0.8 / 0.9) GS 3.00°

**HPMA TACAN RWY 04L** 50°45.47' N  
004°46.02' E **BEAUVECHAIN (EBBE)**

CHANGE: Number of page, minima, OBST., TWR FREQ., IAF, LDA and MSA

BEL DEFENCE, AIR COMPONENT 07-SEP-2023 -THS