

MIPS
INSTRUMENT APPROACH CHART

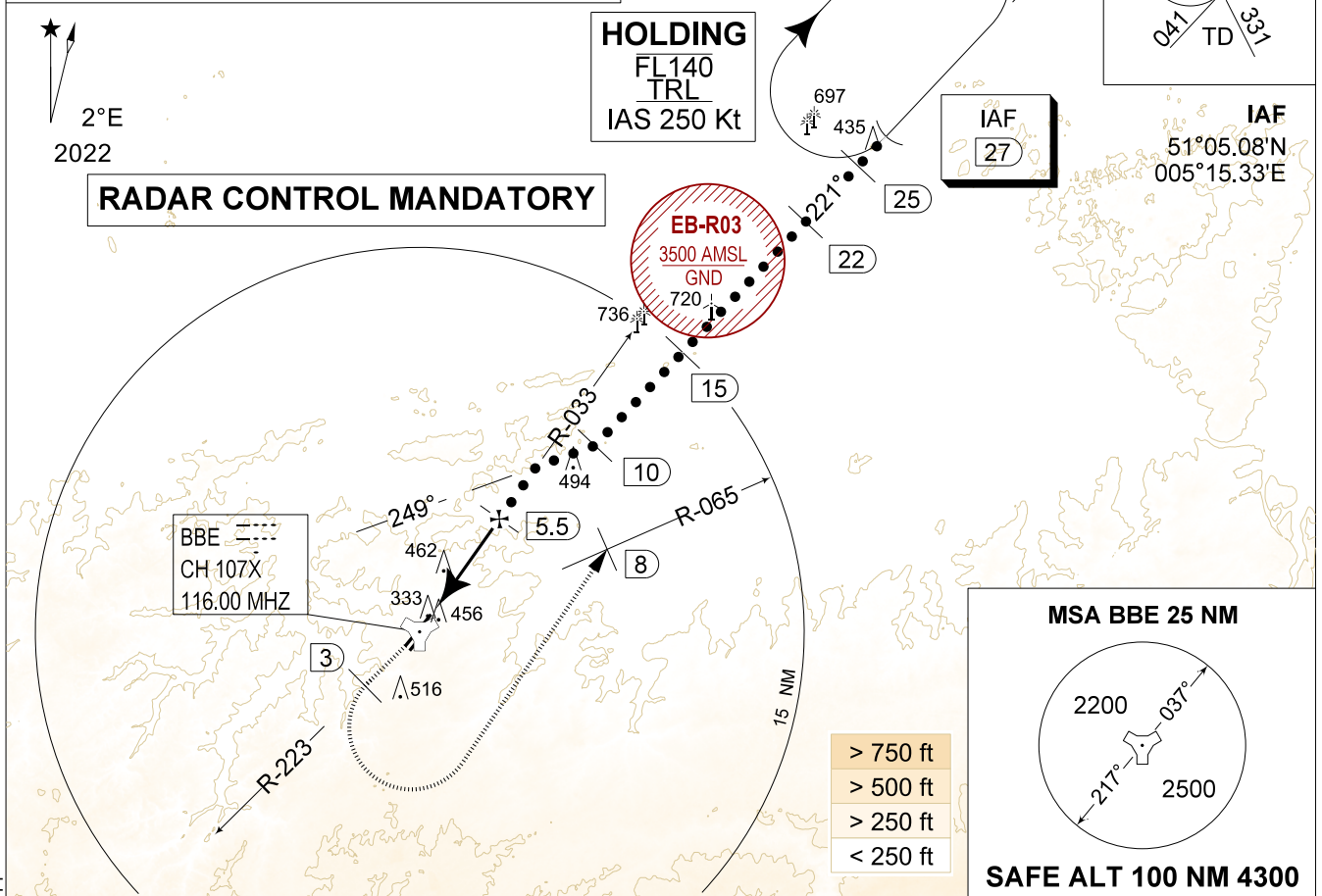
HPMA TACAN RWY 22R
BEAUVECHAIN (EBBE)

AD ELEV 362

BELGA RADAR 374.400 129.325		BEAUVECHAIN APP 282.100 122.830		BEAUVECHAIN TWR 362.025 130.730		BEAUVECHAIN GND 359.825 121.855	
TACAN BBE CH107X	APP COURSE 213°	FAF ALT 1900 FT	DESCENT GR 5.24%(3°)	MDA 710	THR 315 FT	ALS 930 M	LDA 7988 FT

CAUTION:
a) DO NOT USE THIS PROCEDURE WITH COMMS FAILURE

NOTE:
a) BEL AIRCRAFT ONLY
b) NOT AVAILABLE WHEN ACTIVITIES IN EB-R03



DME BBE	5	4	3	2
Altitude	1760	1440	1120	800
Height	(1444)	(1124)	(804)	(484)

MISSED APPROACH

Climb to 1000 FT RWY track and intercept R-223. At 2 DME passed TACAN climb to 3000 FT. Passing 1500 FT or 3 DME whichever comes the latest, turn left at MAX 300 KIAS to intercept 8 DME/R-065 outbound and proceed for a TACAN z RWY 22R.



MIPS	CATEGORY	HPMA
	S-TAC 22R	710 - 1.1 395 (400 - 1.1 / 2.1)
	S-PAR 22R	515 - 0.8 200 (200 - 0.8 / 0.9) GS 3.00°

HPMA TACAN RWY 22R

50°45.47' N
004°46.02' E

BEAUVECHAIN (EBBE)

CHANGE: FAF ALT in the header, final course in the profile and missed approach box

BEL DEFENCE, AIR COMPONENT 07-SEP-2023 -THS