

**MIPS**  
**INSTRUMENT APPROACH CHART**

**ILS x or LOC x RWY 22R**  
**BEAUVECHAIN (EBBE)**

AD ELEV 362

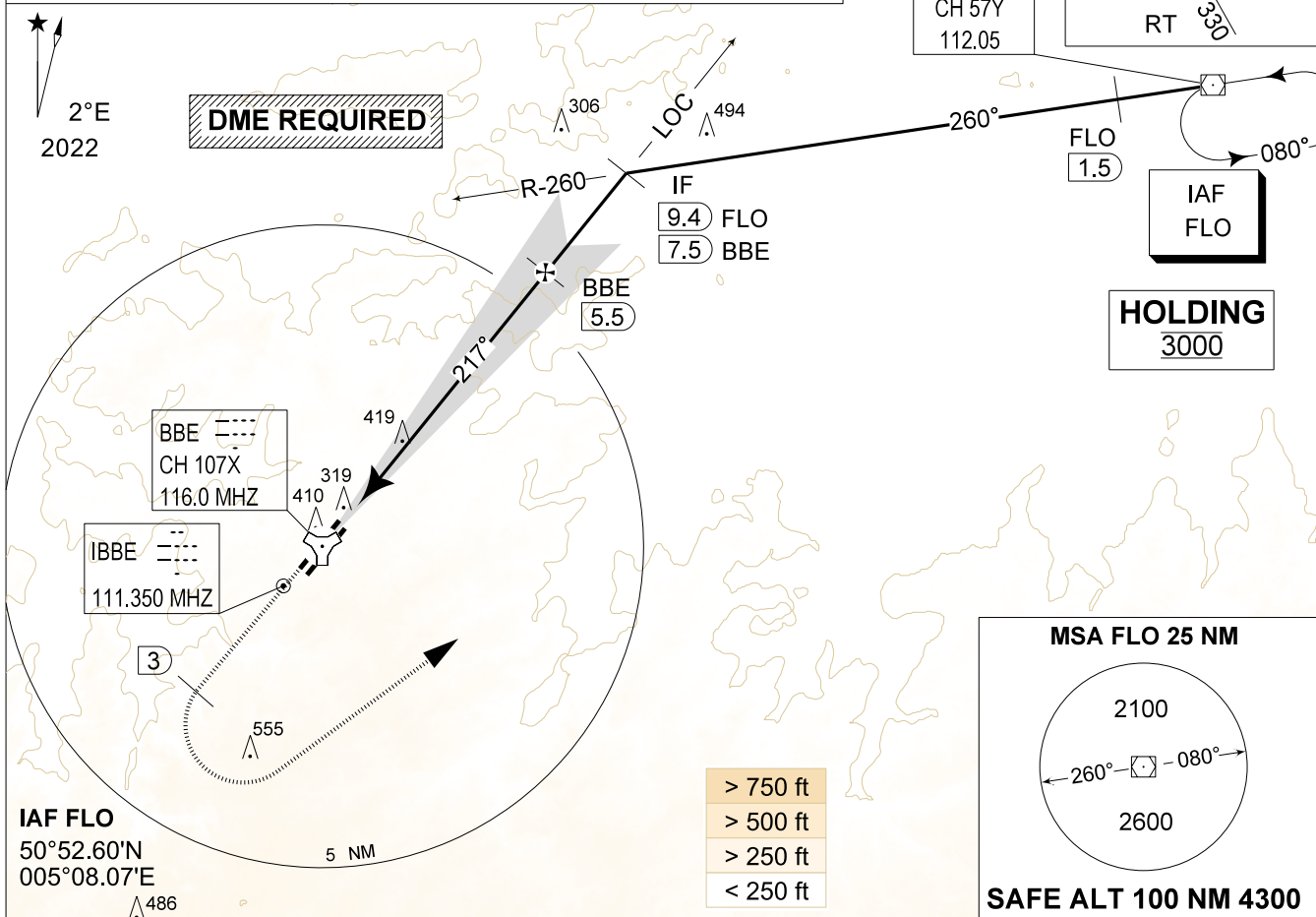
BELGA RADAR 374.400 129.325		BEAUVECHAIN APP 282.100 122.830		BEAUVECHAIN TWR 362.025 130.730		BEAUVECHAIN GND 359.825 121.855	
LOC / DME IBBE 111.350 / 107X	APP COURSE 217°	GS INTCP ALT 1900 FT	GS 3.00°	DA 515	THR 315 FT	ALS 930 M	LDA 7988 FT

**WARNING:**

a) INTERMEDIATE SEGMENT LENGTH SHORTER THAN  
PRESCRIBED LENGTH FOR CAT A (2 NM ISO 3 NM)

**NOTE:**

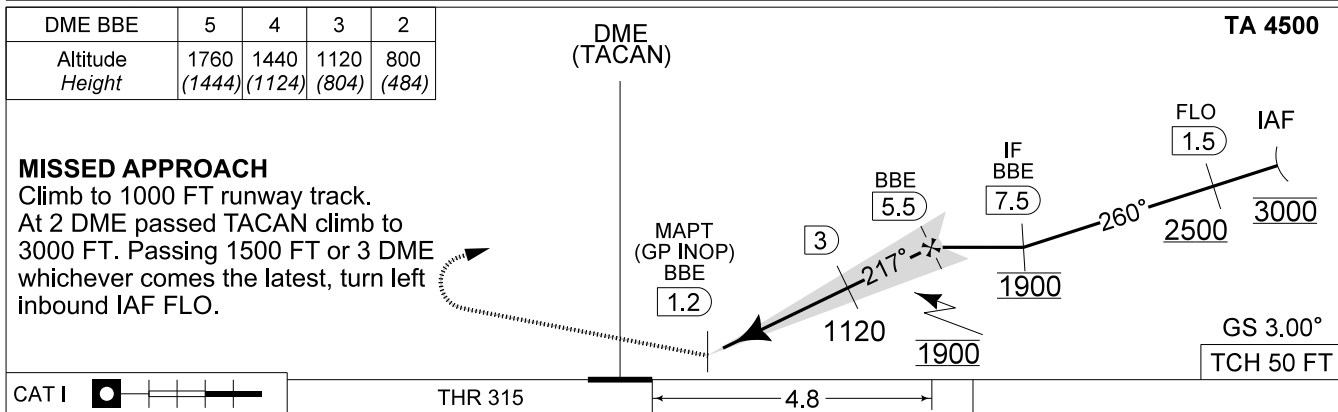
a) DME INFORMATION AVAILABLE UNDER FREQUENCY 116.000 MHZ



DME BBE	5	4	3	2
Altitude	1760	1440	1120	800
Height	(1444)	(1124)	(804)	(484)

**MISSED APPROACH**

Climb to 1000 FT runway track.  
At 2 DME passed TACAN climb to 3000 FT. Passing 1500 FT or 3 DME whichever comes the latest, turn left inbound IAF FLO.



CAT I	THR 315	4.8	FLO 1.5 IAF 3000
CATEGORY	A		H
S-ILS 22R	515 - 0.8 200 (200 - 0.8 / 0.9) GS 3.00°		
S-LOC 22R	720 - 1.2 405 (450 - 1.2 / 2.1)		
S-PAR 22R	534 - 0.8 219 (300 - 0.8 / 1.0) GS 3.00°	515 - 0.8 200 (200 - 0.8 / 0.9) GS 3.00°	

**ILS x or LOC x RWY 22R**

50°45.47' N  
004°46.02' E

**BEAUVECHAIN (EBBE)**

CHANGE: correction of profile view

BEL DEFENCE, AIR COMPONENT 07-SEP-2023 -THS