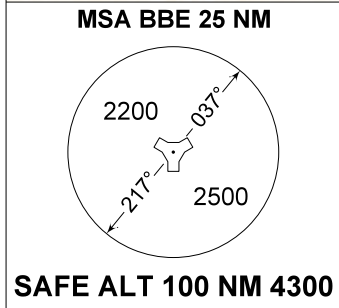
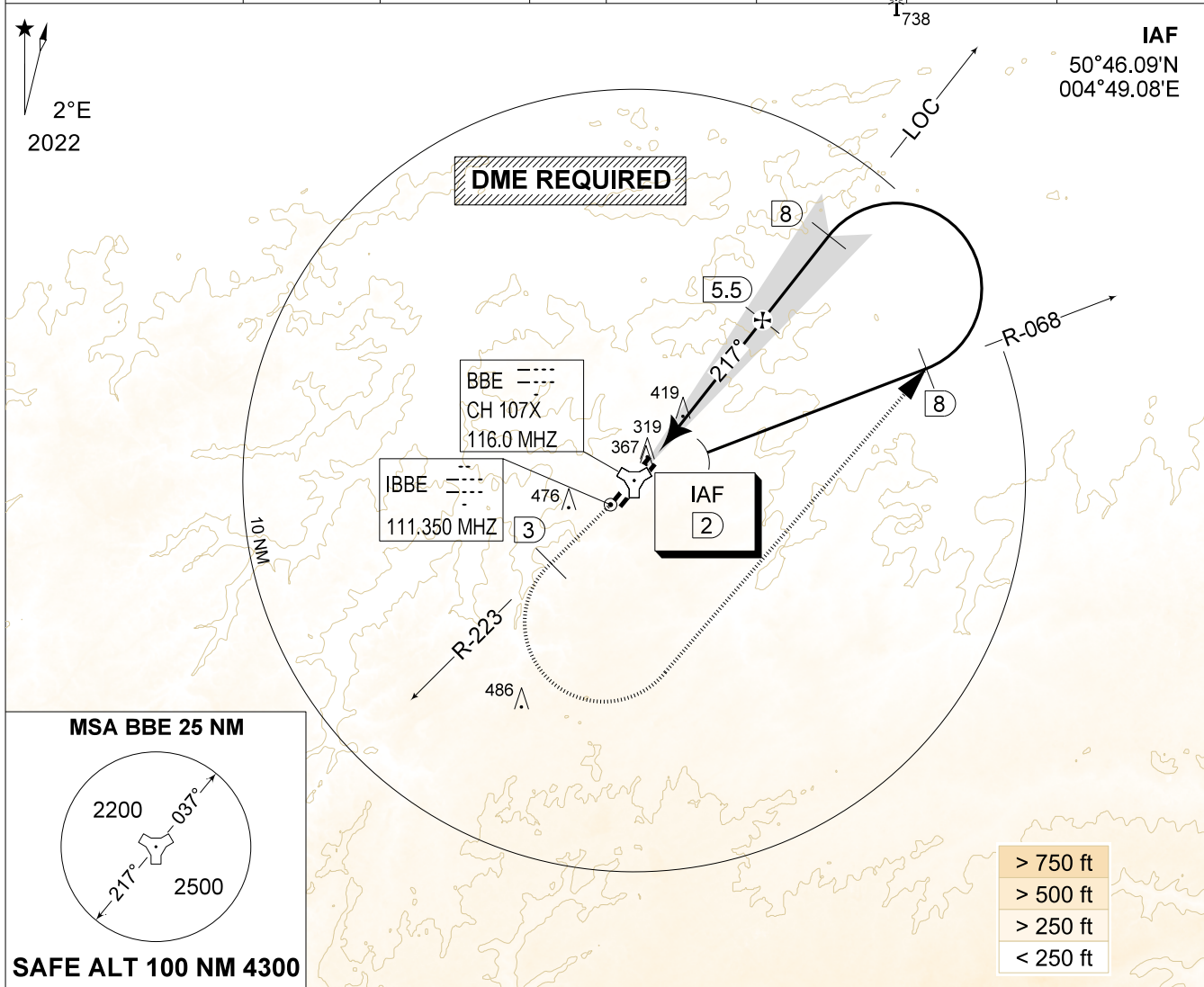


MIPS
INSTRUMENT APPROACH CHART

AD ELEV 362

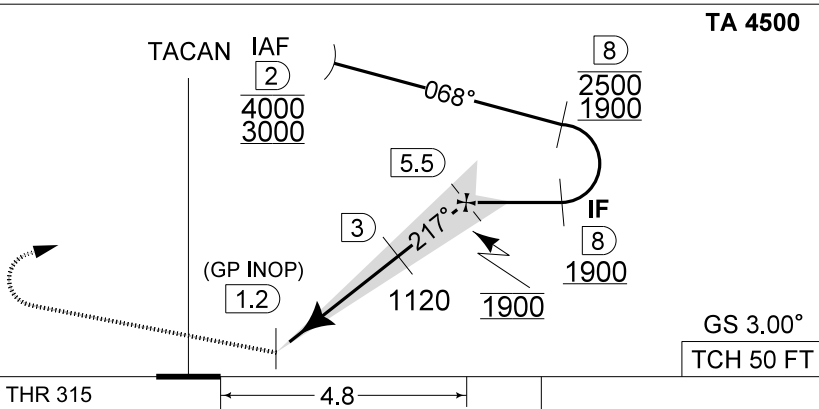
ILS z or LOC z RWY 22R
BEAUVECHAIN (EBBE)

BELGA RADAR 374.400 129.325		BEAUVECHAIN APP 282.100 122.830		BEAUVECHAIN TWR 362.025 130.730		BEAUVECHAIN GND 359.825 121.855	
LOC / DME IBBE 111.350 / 107X	APP COURSE 217°	GS INTCP ALT 1900 FT	GS 3.00°	DA 515	THR 315 FT	ALS 930 M	LDA 7988 FT



DME BBE	5	4	3	2
Altitude	1760	1440	1120	800
Height	(1444)	(1124)	(804)	(484)

MISSED APPROACH
Climb to 1000 FT runway track and intercept R-223. At 2 DME passed TACAN climb to 3000 FT. Passing 3 DME, turn left at MAX 220 KIAS (300 KIAS for HPMA) to intercept 8 DME/R-068 outbound and proceed for a ILS z or LOC z RWY 22R.



CAT I

THR 315 4.8 TCH 50 FT

CATEGORY	C	D	HPMA
S-ILS 22R	515 - 0.8 200 (200 - 0.8 / 0.9) GS 3.00°		
S-LOC 22R	720 - 1.2 405 (500 - 1.2 / 2.1)		
S-PAR 22R	554 - 0.8 239 (300 - 0.8 / 1.1) GS 3.00°	565 - 0.8 250 (300 - 0.8 / 1.2) GS 3.00°	515 - 0.8 200 (200 - 0.8 / 0.9) GS 3.00°

ILS z or LOC z RWY 22R

50°45.47' N
004°46.02' E

BEAUVECHAIN (EBBE)

CHANGE: Radial missed approach

BEL DEFENCE, AIR COMPONENT 05-OCT-2023 - THS