

MIPS
INSTRUMENT APPROACH CHART

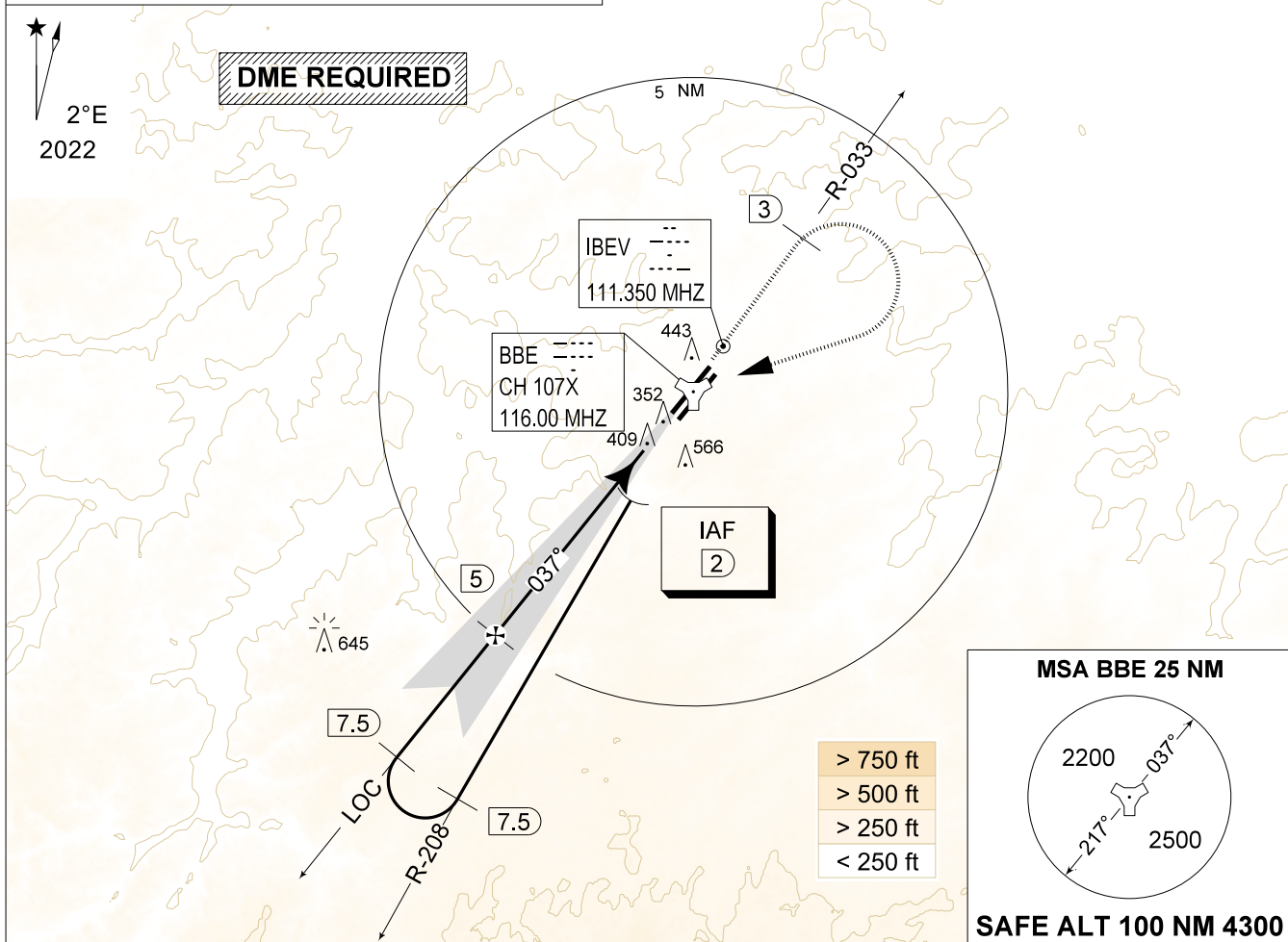
ILS y or LOC y RWY 04L
BEAUVECHAIN (EBBE)

AD ELEV 362

BELGA RADAR 374.400 129.325		BEAUVECHAIN APP 282.100 122.830		BEAUVECHAIN TWR 362.025 130.730		BEAUVECHAIN GND 359.825 121.855	
LOC / DME IBEV 111.350 / 107X	APP COURSE 037°	GS INTCP ALT 1800 FT	GS 3.00°	DA 549	THR 349 FT	ALS 930 M	LDA 7959 FT

NOTE:
a) IF IAF IS ABOVE 3000 FT, ATC COORDINATION WITH BRUSSELS ACC IS REQUIRED

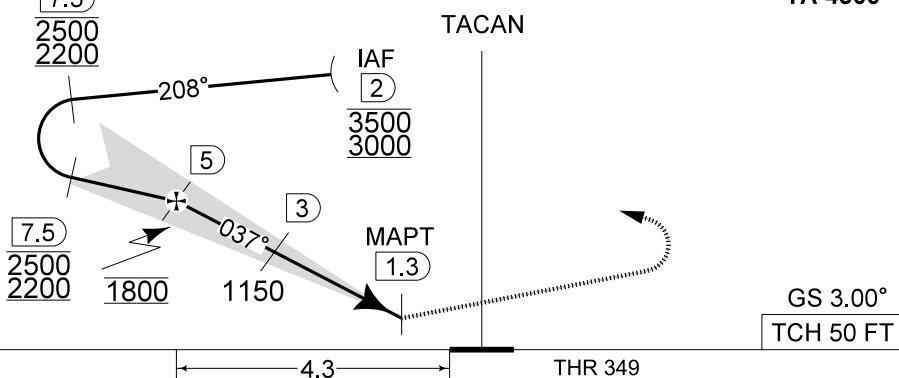
IAF
50°43.68'N
004°44.55'E



DME BBE	5	4	3	2	7.5
Altitude	1790	1470	1150	830	2500
Height	(1441)	(1121)	(801)	(481)	2200

MISSED APPROACH

Climb to 1000 FT RWY track and intercept R-033. At 2 DME past TACAN climb to 3000 FT. Passing 1500 FT or 3 DME whichever comes the latest, turn right inbound BBE TACAN and proceed back to IAF ILS y RWY 04L.



CAT I

MIPS	CATEGORY	A
	S-ILS 04L	549 - 0.8 200 (200 - 0.8 / 0.9) GS 3.00°
	S-LOC 04L	750 - 1.2 401 (500 - 1.2 / 2.1)
	S-PAR 04L	580 - 0.8 231 (300 - 0.8 / 1.1) GS 3.00°

ILS y or LOC y RWY 04L

50°45.47' N
004°46.02' E

BEAUVECHAIN (EBBE)

CHANGE: Number of page, minima, OBST., TWR FREQ., FAF, LDA, note and MSA

BEL DEFENCE, AIR COMPONENT 07-SEP-2023 -THS