

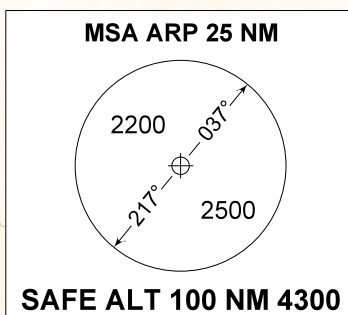
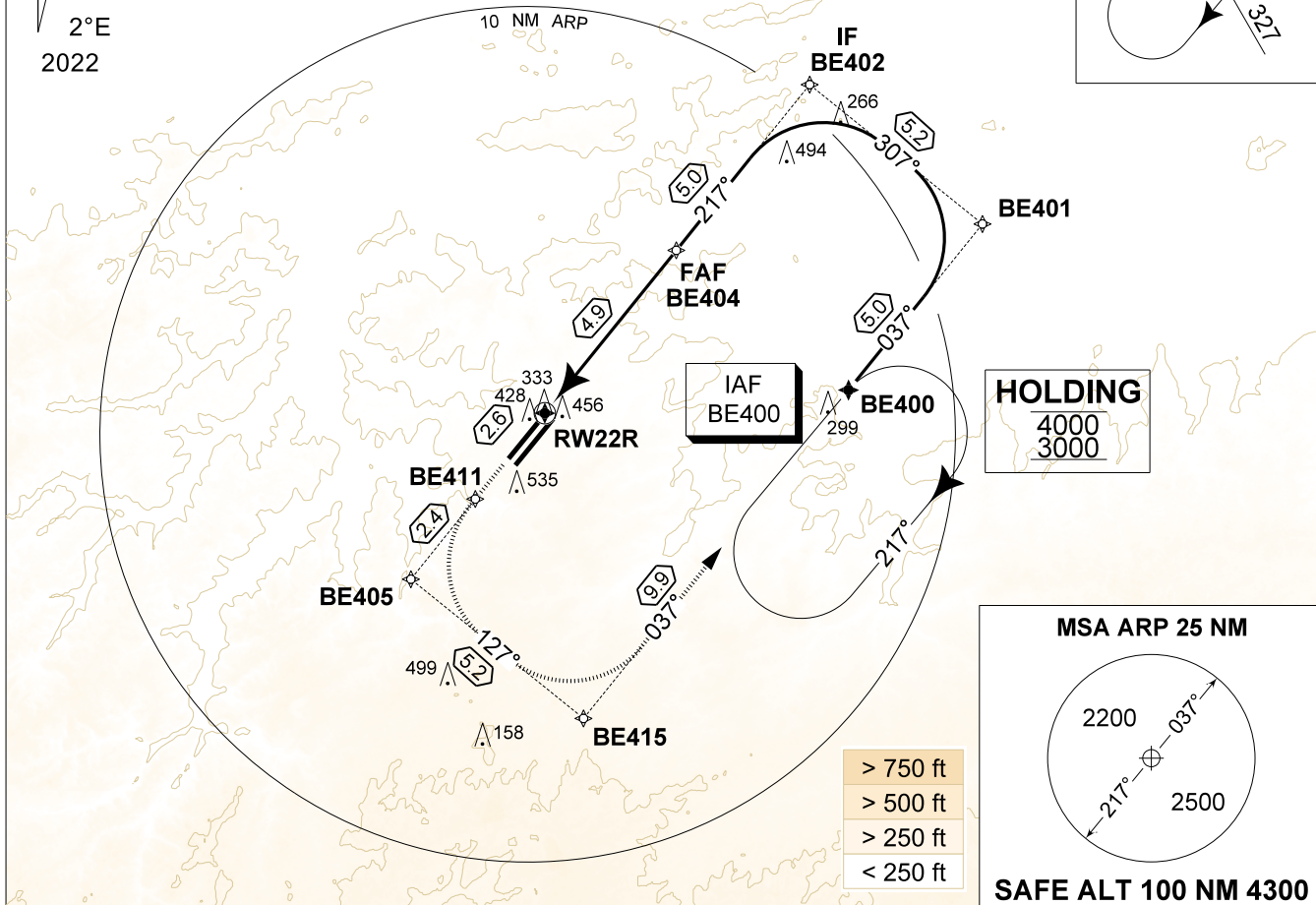
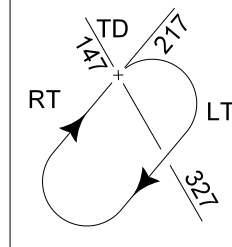
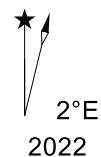
**MIPS**  
**INSTRUMENT APPROACH CHART**

AD ELEV 362

**RNP RWY 22R**  
**BEAUVECHAIN (EBBE)**

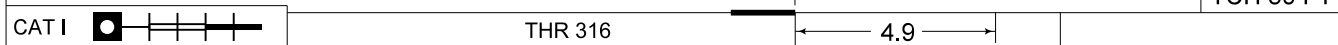
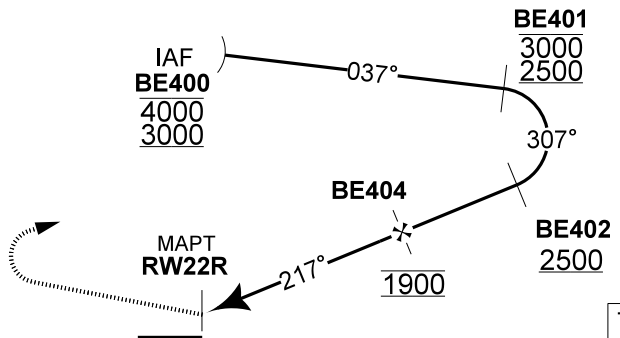
BELGA RADAR 374.400 129.325		BEAUVECHAIN APP 282.100 122.830		BEAUVECHAIN TWR 362.025 130.730		BEAUVECHAIN GND 359.825 121.855	
EGNOS CH E22B 59329	APP CRS 217°	FAF ALT 1900 FT	Descent GR 5.24% (3°)	DA <b>515</b>	THR 315 FT	ALS 930 M	LDA 7988 FT

**NOTE:**  
a) MINIMUM TEMPERATURE -20°C.



THR 22R	4	3	2
Altitude	1640	1330	1010
Height	(1324)	(1014)	(694)

**MISSED APPROACH**  
MAX SPEED 190 KIAS.  
Climb to 1000 FT inbound BE411 then continue climbing inbound BE405 then BE415 to reach IAF BE400 at 3000 FT.



CATEGORY	A - B - C - H
LPV 22R	<b>515</b> - 0.8 200 (200 - 0.8 / 0.9) GS 3.0°
LNAV/VNAV 22R	<b>606</b> - 0.8 291 (300 - 0.8 / 1.4) GS 3.0°
LNAV 22R	<b>710</b> - 1.1 395 (400 - 1.1 / 2.1)

**RNP RWY 22R** 50°45.47' N  
004°46.02' E **BEAUVECHAIN (EBBE)**

CHANGE: BE402 ALT and EGNOS CH updated

BEL DEFENCE, AIR COMPONENT 07-SEP-2023 -THS