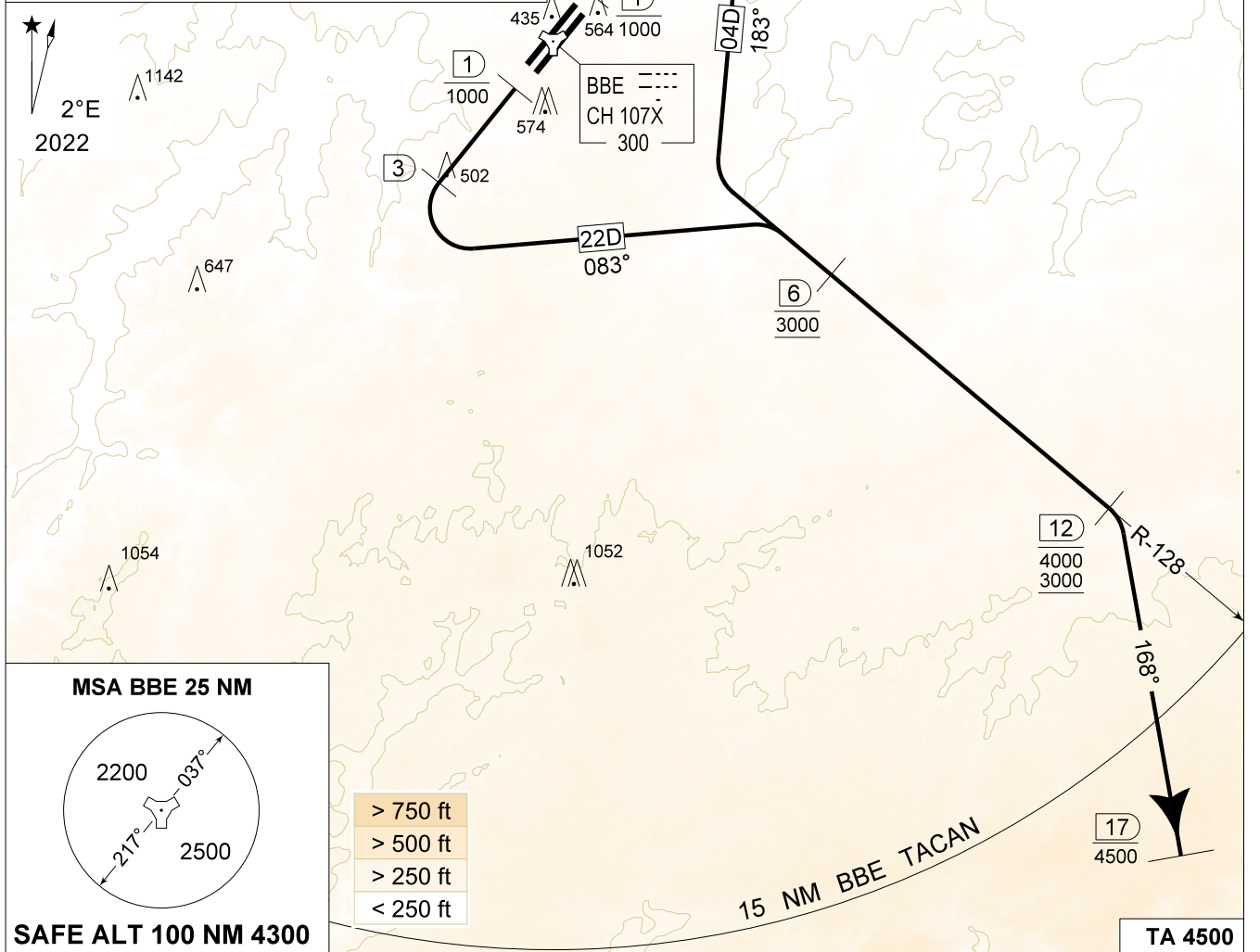


MIPS **BE 04D - 22D**
INSTRUMENT DEPARTURE CHART AD ELEV 362 **BEAUVECHAIN (EBBE)**

BEAUVECHAIN GND 359.825 121.855	BEAUVECHAIN TWR 362.025 130.730	BEAUVECHAIN APP 282.100 122.830	BELGA RADAR 374.400 130.580
TACAN BBE - CH 107X	RWY 04	PDG 4,1% 2,35°	From-To DER-4000
	22	4,1% 2,35°	DER-4000
			60 90 120 150 Reason
			250 380 500 630 ATC

NOTE:
a) ONLY FOR CAT A.
b) DEPARTURE RWY 04L / 22R AUTHORIZED.
c) CLOSE-IN OBSTACLES NOT CONSIDERED TO DETERMINE THE PDG.

50°46'24.83" N	004°46'57.55" E	415 FT AMSL
50°45'46.78" N	004°46'58.85" E	371 FT AMSL
50°44'25.49" N	004°44'58.64" E	440 FT AMSL



MSA BBE 25 NM

SAFE ALT 100 NM 4300

- > 750 ft
- > 500 ft
- > 250 ft
- < 250 ft

<p>BE 04D (RWY 04)</p> <p style="text-align: center;">(24)</p>	<ul style="list-style-type: none"> - Climb on track 037° (MAX 120 KT IAS) and contact EBBE APP. - Pass 1 DME at or below 1000 FT. - At 3 DME turn right on track 183° to intercept R-128 outbound. - Pass 6 DME / R-128 at 3000 FT AMSL. - Pass 12 DME / R-128 between 3000 FT and 4000 FT turn right on track 168°. Climb as directed. - Pass 17 DME at or below 4500 FT AMSL and contact BELGA RADAR.
<p>BE 22D (RWY 22)</p> <p style="text-align: center;">(24)</p>	<ul style="list-style-type: none"> - Climb on track 217° (MAX 120 KT IAS) and contact EBBE APP. - Pass 1 DME at or below 1000 FT. - At 3 DME turn left on track 083° to intercept R-128 outbound. - Pass 6 DME / R-128 at 3000 FT AMSL. - Pass 12 DME / R-128 between 3000 FT and 4000 FT turn right on track 168°. Climb as directed. - Pass 17 DME at or below 4500 FT AMSL and contact BELGA RADAR.

BE 04D - 22D 50°45.47' N
004°46.02' E **BEAUVECHAIN (EBBE)**

BEL DEFENCE, AIR COMPONENT 22-FEB-2024 - THS

CHANGE: Scaling plan view