

MIPS
INSTRUMENT APPROACH CHART

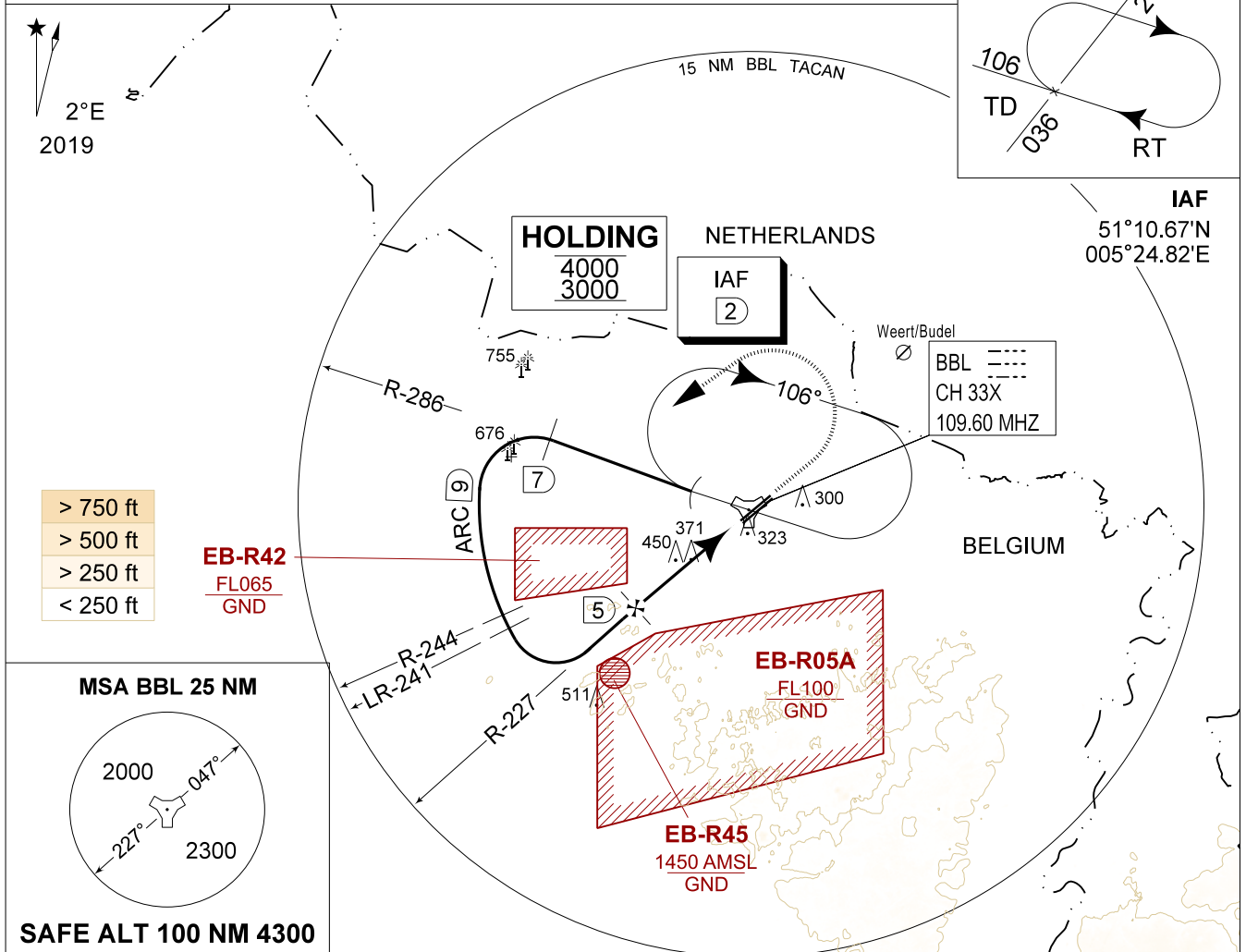
TACAN RWY 05L
KLEINE-BROGEL (EBBL)

AD ELEV 192

BELGA RADAR 374.400 129.325		KLEINE-BROGEL APP 337.600 134.480		KLEINE-BROGEL TWR 248.075 134.105		KLEINE-BROGEL GND 362.775 122.100	
LOC / DME BBL CH 33X	APP COURSE 047°	FAF ALT 1700 FT	DESCENT GR 5.24% (3.00°)	MDA 620	THR 185 FT	ALS 930 M	LDA 8104 FT

CAUTION:

a) ATC MONITORING REQUIRED TO REMAIN CLEAR OF EB-R42

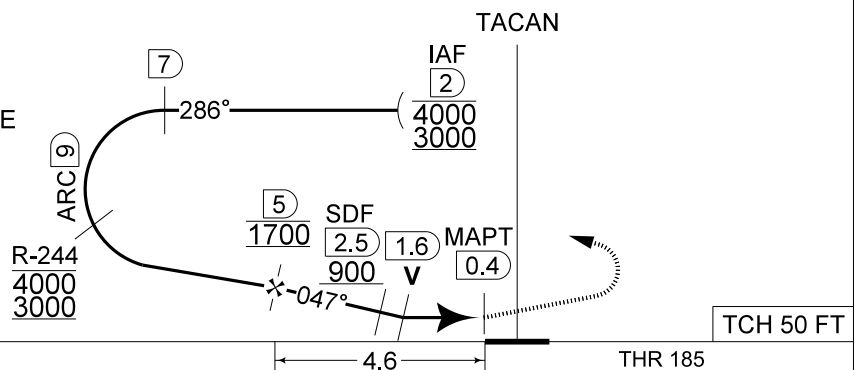


DME BBL	5	4	3	2
Altitude	1700	1380	1060	740
Height	(1515)	(1195)	(875)	(555)

TA 4500

MISSED APPROACH

Climb straight ahead to 1000 FT. At 1 DME passed BBL TACAN continue climb to 3000 FT. At 2.5 DME passed BBL TACAN turn left at MAX 210 KIAS (MAX 275 KIAS for HPMA) to intercept 7 DME/R-286 outbound and proceed for a TACAN RWY 05L.



CAT I

CATEGORY	A - B	C - D	HPMA
S-TAC 05L	620 - 1.3 435 (500 - 1.3 / 2.3)		
S-PAR 05L	442 - 0.8 257 (300 - 0.8 / 1.2) GS 3.00°		385 - 0.8 200 (200 - 0.8 / 0.9) GS 3.00°
CIRCLING	720 - 1.6 528 (600 - 1.6)	900 - 3.6 708 (800 - 3.6)	770 - 3.2 578 (600 - 3.2)

TACAN RWY 05L

51°10.10' N
005°28.19' E

KLEINE-BROGEL (EBBL)

CHANGE: CAUTION