

MIPS
INSTRUMENT APPROACH CHART

QRA HPMA-TACAN RWY 05L
KLEINE-BROGEL (EBBL)

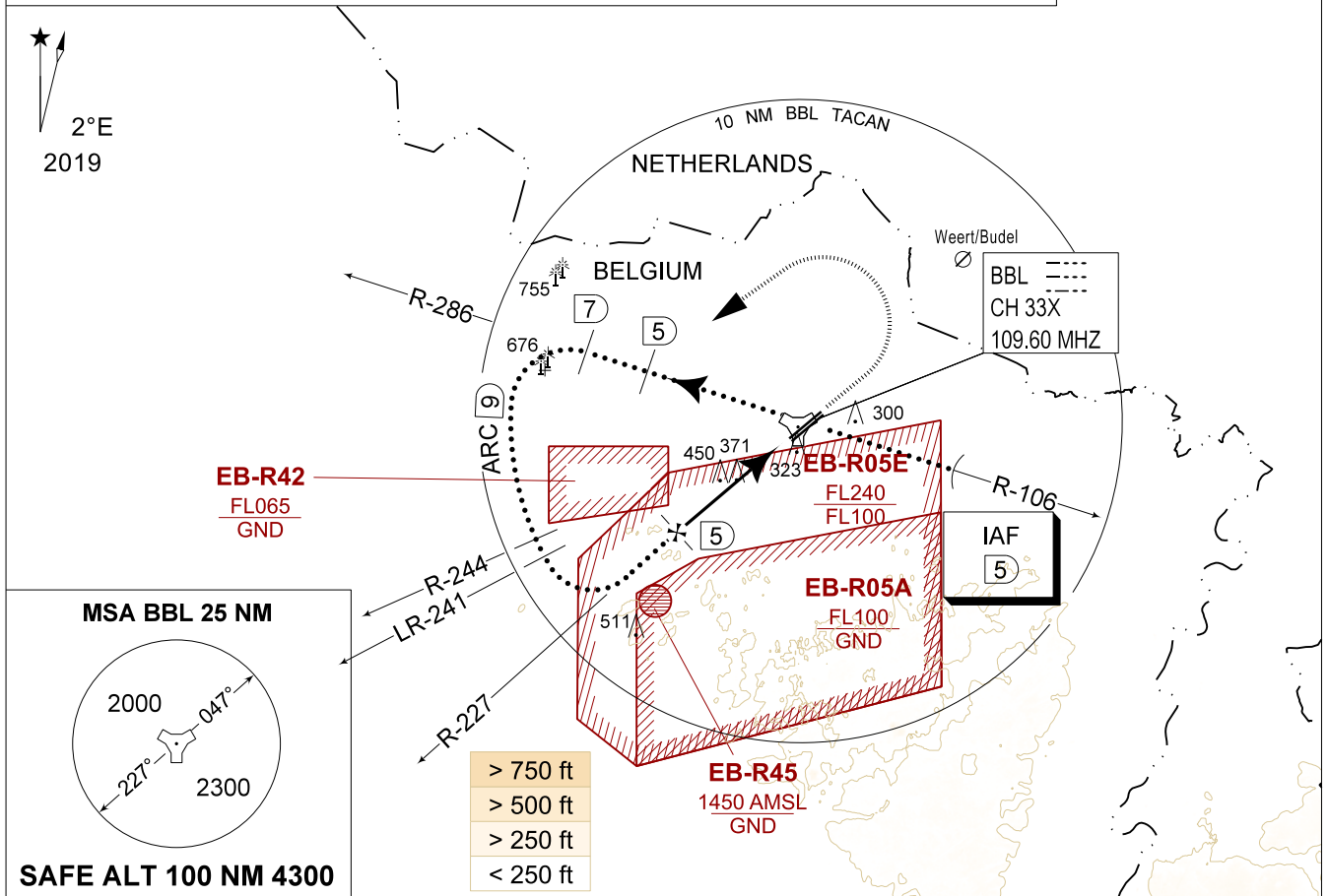
AD ELEV 192

BELGA RADAR 374.400 129.325		KLEINE-BROGEL APP 337.600 134.480		KLEINE-BROGEL TWR 248.075 134.105		KLEINE-BROGEL GND 362.775 122.100	
LOC / DME BBL CH 33X	APP COURSE 047°	FAF ALT 1700 FT	DESCENT GR 5.24% (3.00°)	MDA 620	THR 185 FT	ALS 930 M	LDA 8104 FT

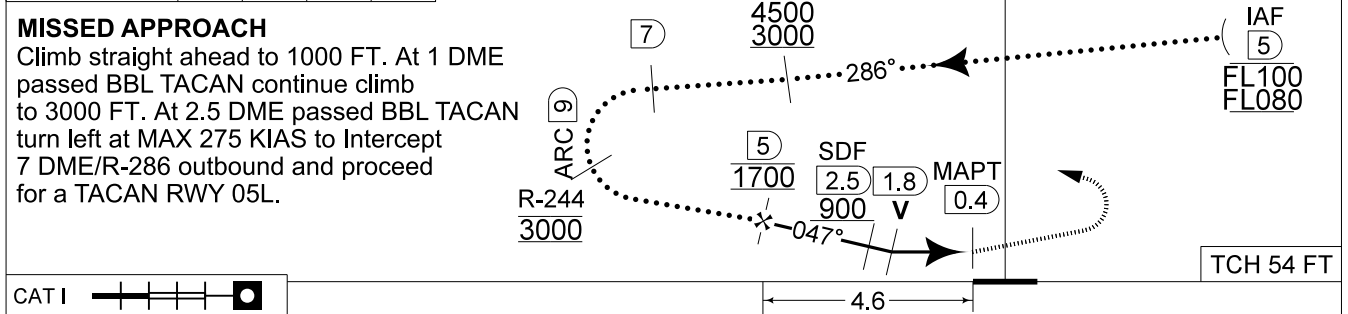
CAUTION:

- a) TO BE USED FOR QRA RECOVERY OUTSIDE MIL FLYING HOURS OR FOR TRAINING PURPOSES OF HOMEBASED AIRCRAFT
- b) AIRCRAFT PROCEEDING IAF AT FL 100 OR ABOVE REQUIRES DECONFLICTION WITH EB-R05E
- c) ATC MONITORING REQUIRED TO REMAIN CLEAR OF EB-R42

IAF
51°08.50'N
005°35.40'E



DME BBL	5	4	3	2	TA 4500
Altitude Height	1700 (1515)	1380 (1195)	1060 (875)	740 (555)	



CATEGORY	HPMA
S-TAC 05L	620 - 1.3 435 (500 - 1.3 / 2.3)
S-PAR 05L	385 - 0.8 200 (200 - 0.8 / 0.9) GS 3.00°
CIRCLING	770 - 3.2 578 (600 - 3.2)

QRA HPMA-TACAN RWY 05L 51°10.10'N 005°28.19' E **KLEINE-BROGEL (EBBL)**

CHANGE: CAUTION