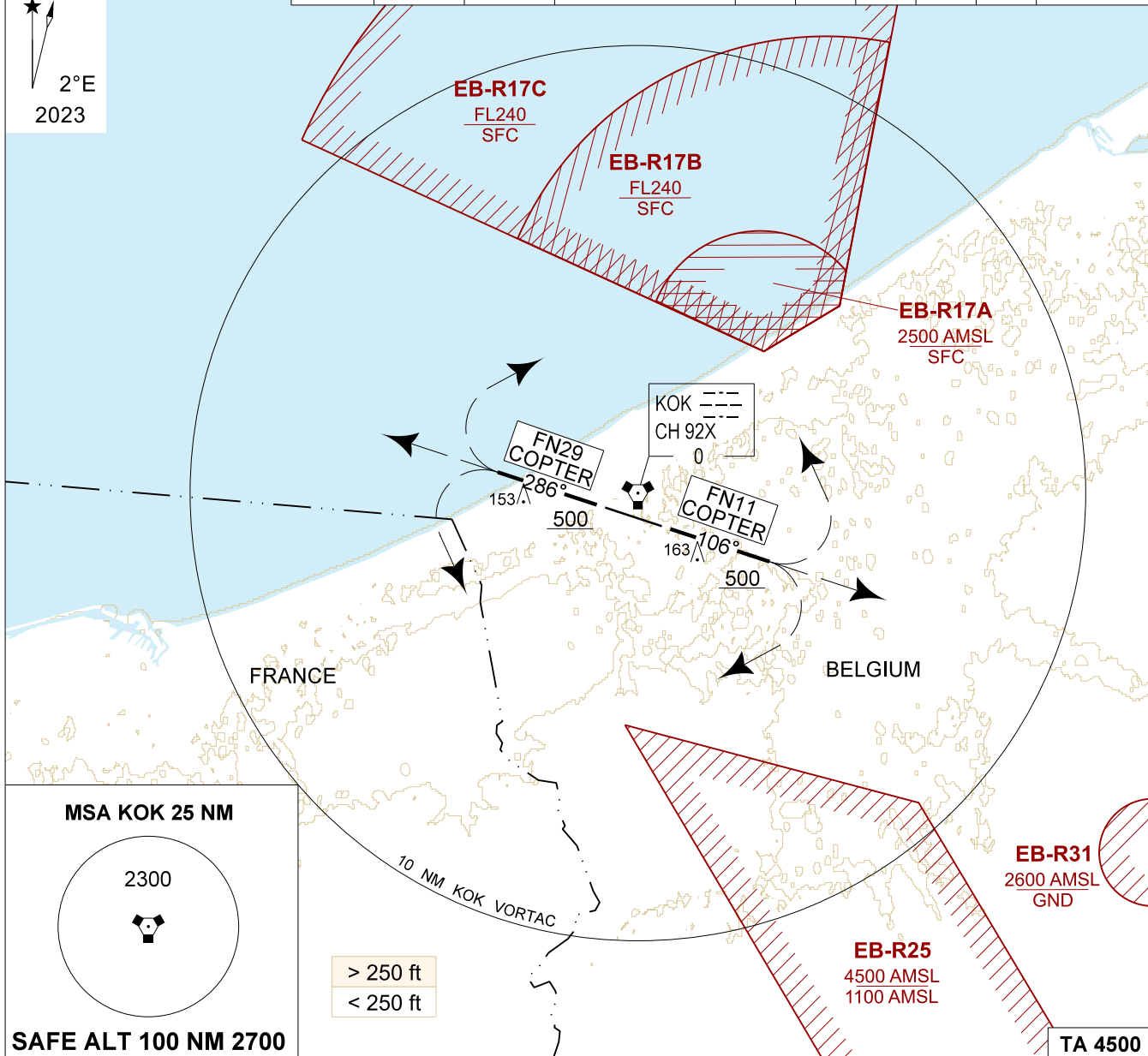


MIPS
INSTRUMENT DEPARTURE CHART

FN 11 COPTER - 29 COPTER
KOKSIJDE (EBFN)

AD ELEV 11

KOKSIJDE GND 231.800 122.100		KOKSIJDE TWR 231.800 122.100		KOKSIJDE APP 235.050 121.055			BELGA RADAR 374.400 129.325			
DVORTAC KOK 114.500 CH 92X		RWY	PDG	From-To	60	120	180	240	300	Reason
		11	5.00% 2.86°	DER-2200	310	610	920	N/A	N/A	ATC
		29	5.00% 2.86°	DER-2200	310	610	920	N/A	N/A	ATC



FN 11 COPTER (RWY 11) 	- Climb straight ahead to 500 FT AMSL at 5% CG. - Turn as cleared by ATC while climbing to MSA.
FN 29 COPTER (RWY 29) 	- Climb straight ahead to 500 FT AMSL at 5% CG. - Turn as cleared by ATC while climbing to MSA.

FN 11 COPTER - 29 COPTER

51°05.42' N
002°39.17' E

KOKSIJDE (EBFN)

CHANGE: MAG VAR

BEL DEFENCE, AIR COMPONENT 07-SEP-2023 - THS