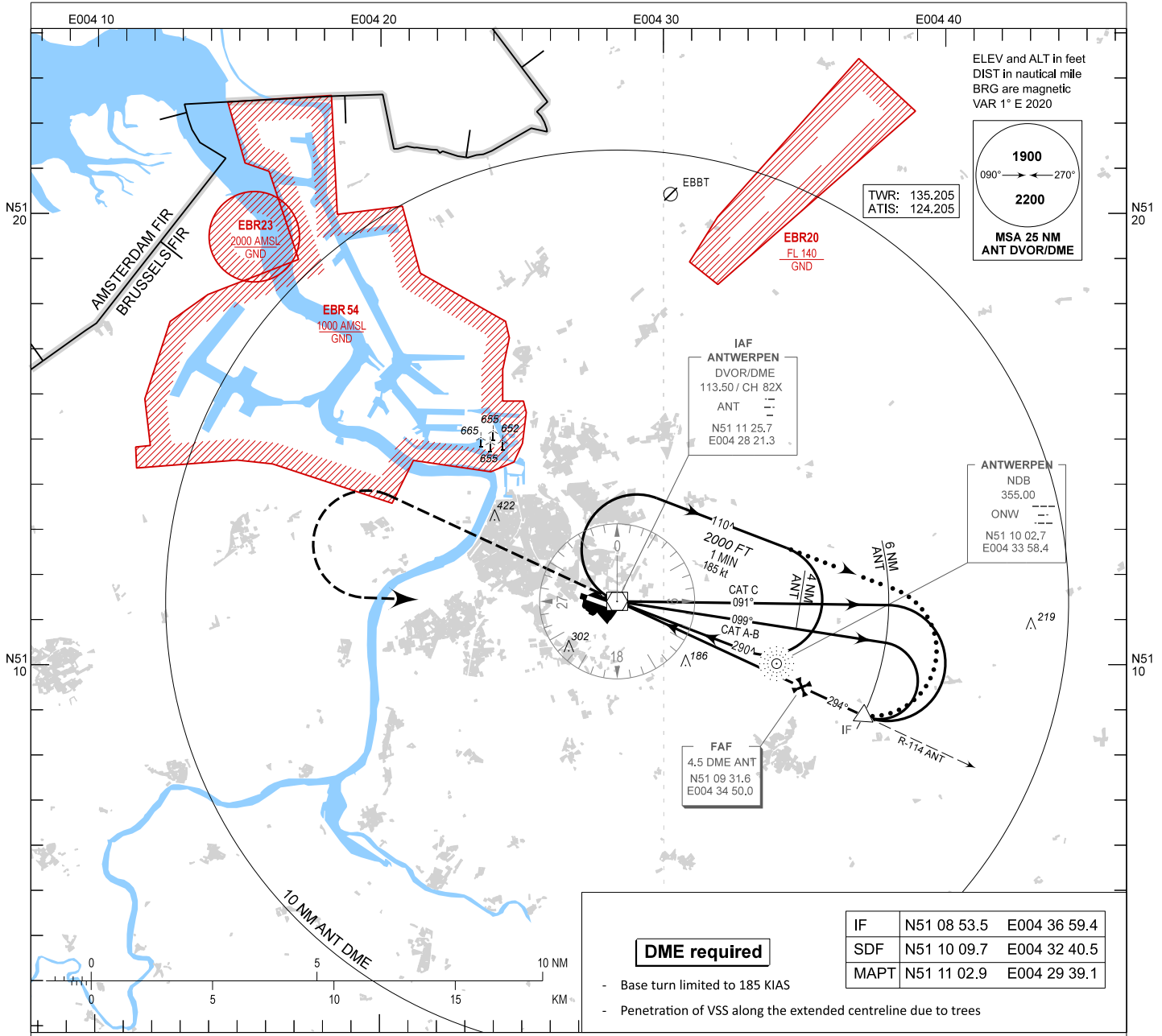


INSTRUMENT APPROACH CHART - ICAO

HGT RELATED TO AD ELEV 32

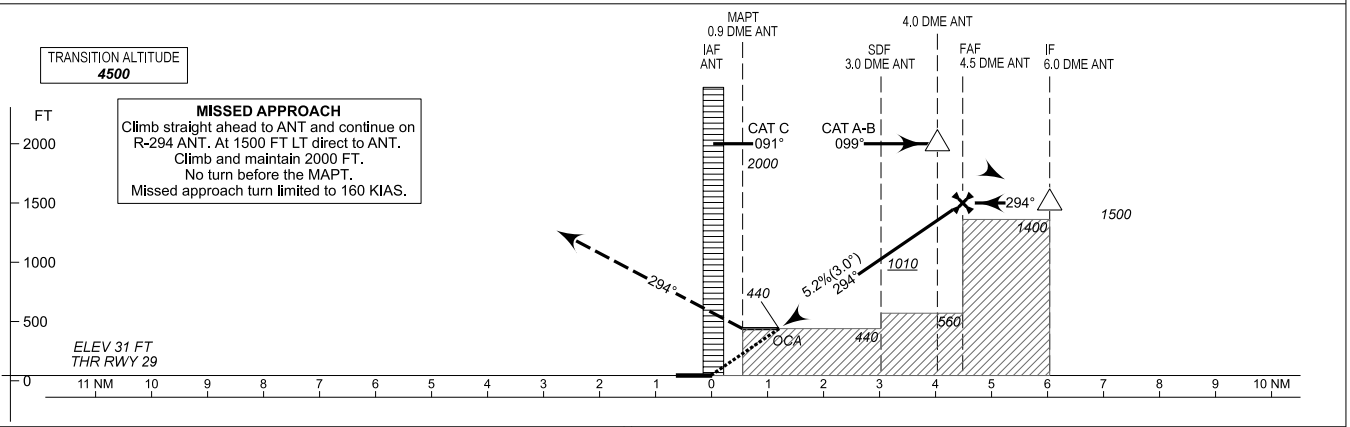
ANTWERPEN / Deurne (EBAW)

VOR RWY 29



DME required	IF	N51 08 53.5	E004 36 59.4
	SDF	N51 10 09.7	E004 32 40.5
	MAPT	N51 11 02.9	E004 29 39.1

- Base turn limited to 185 KIAS
- Penetration of VSS along the extended centreline due to trees



CAT of ACFT	OCA (OCH)		
	A	B	C
VOR without SDF	560 (530)	560 (530)	560 (530)
VOR	440 (400)	440 (400)	440 (400)
CIRCLING	590 (560)	720 (690)	1060 (1030)

Speed (GS)	FAF to MAPT - 3.9 NM				
	KT	70	90	120	
Rate of descent	FT/MIN	375	480	640	
PROCEDURE ALTITUDES (HEIGHTS)					
DME ANT		4.5	4.0	3.0 SDF	2.0
DIST THR		4.4	3.9	2.9	1.9
Altitude (height)		1500 (1460)	1330 (1290)	1010 (980)	690 (660)

CHANGES: Minor updates