

**AERODROME OBSTACLE CHART - ICAO**  
TYPE A (OPERATING LIMITATIONS)

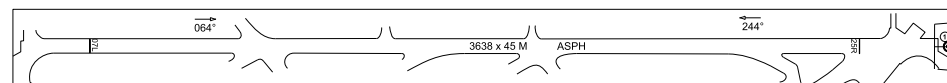
**BRUSSELS / Brussels-National (EBBR)**

**RWY 07L / 25R**

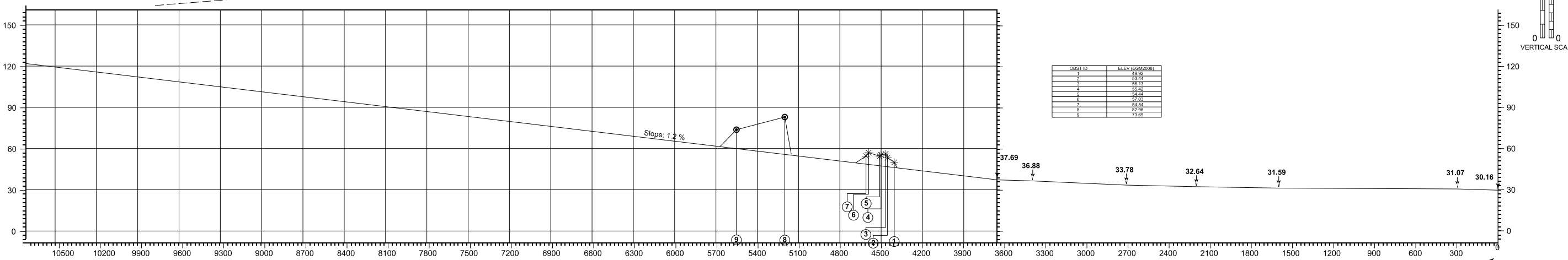
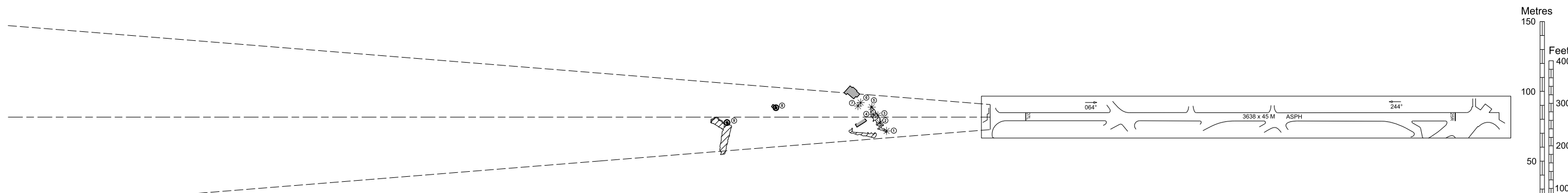
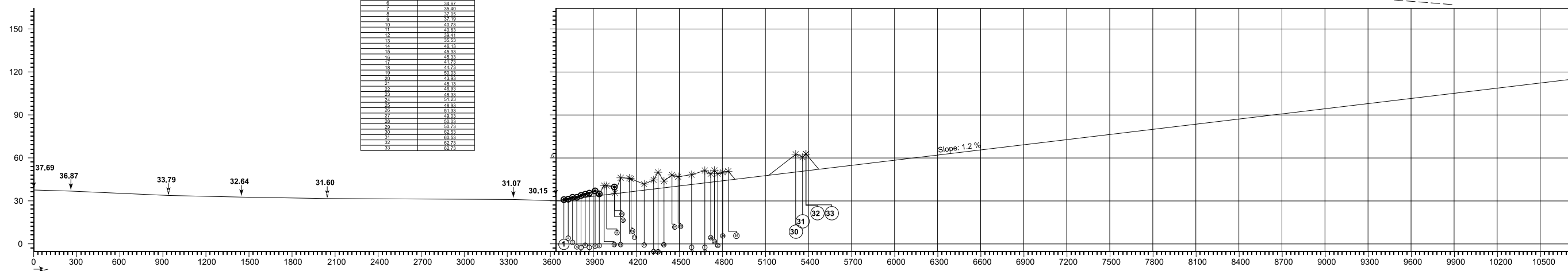
| DECLARED DISTANCES |                                    |         |
|--------------------|------------------------------------|---------|
| RWY 07L            |                                    | RWY 25R |
| 3638               | Take-off run available             | 3638    |
| 3638               | Take-off distance available        | 3638    |
| 3638               | Accelerate stop distance available | 3638    |
| 3350               | Landing distance available         | 3339    |

| LEGEND                                   |       |
|--|-------|
| Building or large structure              | ■     |
| Fence                                    | ***** |
| Identification number                    | ①     |
| Pole, antenne, chimney, tower            | ⊙     |
| Tree or shrub                            | *     |
| Obstacle area penetrating obstacle plane | ⌒     |

ORDER OF ACCURACY  
INFO NOT AVBL



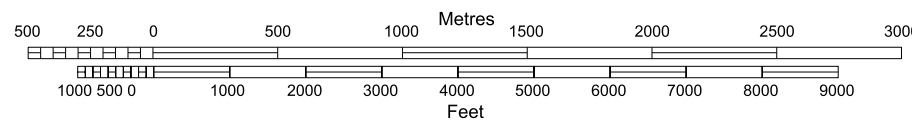
| OBST ID | ELEV. (CAM2008) |
|---------|-----------------|
| 1       | 30.91           |
| 2       | 31.78           |
| 3       | 32.02           |
| 4       | 33.15           |
| 5       | 33.78           |
| 6       | 34.67           |
| 7       | 35.66           |
| 8       | 37.06           |
| 9       | 37.78           |
| 10      | 40.73           |
| 11      | 40.83           |
| 12      | 39.81           |
| 13      | 35.53           |
| 14      | 46.13           |
| 15      | 45.83           |
| 16      | 45.33           |
| 17      | 41.73           |
| 18      | 44.93           |
| 19      | 50.03           |
| 20      | 43.83           |
| 21      | 46.13           |
| 22      | 46.93           |
| 23      | 49.03           |
| 24      | 51.23           |
| 25      | 49.83           |
| 26      | 51.33           |
| 27      | 50.03           |
| 28      | 50.03           |
| 29      | 50.73           |
| 30      | 62.53           |
| 31      | 60.53           |
| 32      | 62.73           |
| 33      | 62.73           |



| OBST ID | ELEV. (CAM2008) |
|---------|-----------------|
| 1       | 49.59           |
| 2       | 53.84           |
| 3       | 55.13           |
| 4       | 55.42           |
| 5       | 54.44           |
| 6       | 57.03           |
| 7       | 54.54           |
| 8       | 62.86           |
| 9       | 73.89           |

BEARINGS ARE MAGNETIC  
MAGNETIC VARIATION 1° E 2020  
DIMENSIONS AND HEIGHTS IN METRES

Surveying agency: Plan3D by Vansteelandt bv



CHANGE: Minor updates