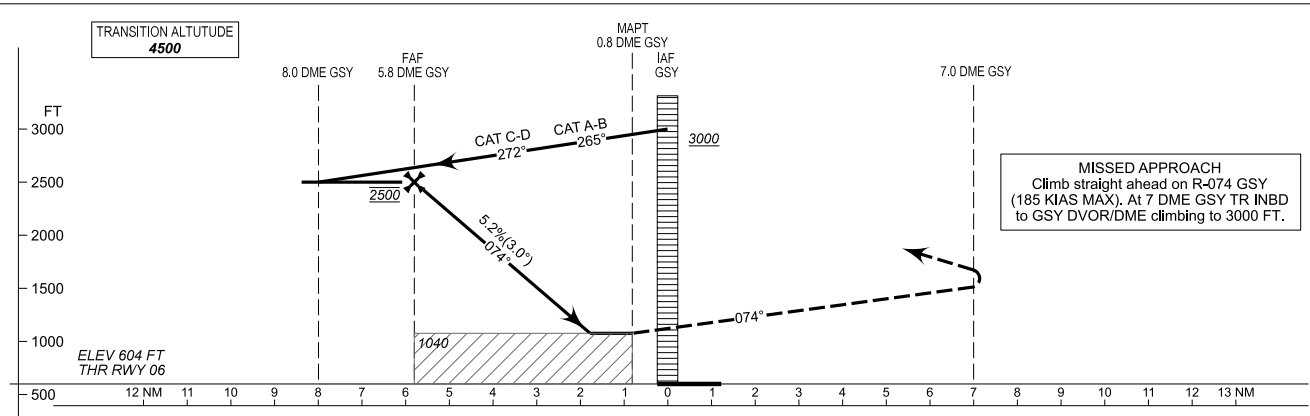
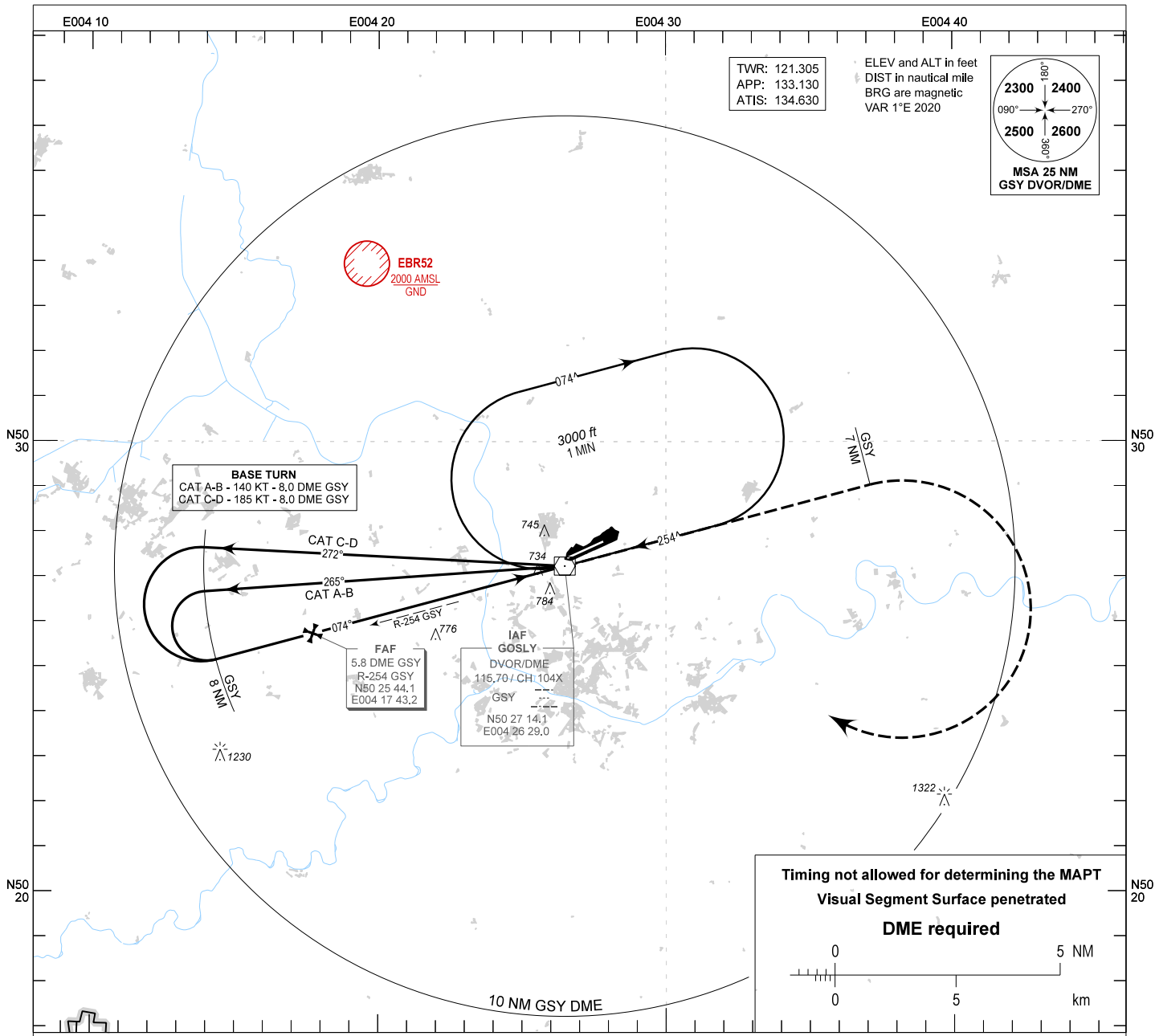


**INSTRUMENT APPROACH  
CHART - ICAO**

AD ELEV 606  
OCH RELATED TO  
THR RWY 06 - ELEV 604

**CHARLEROI / Brussels South (EBCI)  
VOR RWY 06**



CHANGES: Minor updates

| OCA (OCH)   |            |            |            |            | FAF to MAPT - 5.0 NM |        |      |      |      |      |     |
|-------------|------------|------------|------------|------------|----------------------|--------|------|------|------|------|-----|
| CAT of ACFT | A          | B          | C          | D          | Speed (GS)           | KT     | 70   | 90   | 120  | 150  | 180 |
| VOR         | 1040 (430) | 1040 (430) | 1040 (430) | 1040 (430) | Rate of descent      | FT/MIN | 375  | 480  | 640  | 800  | 960 |
| CIRCLING    | 1220 (610) | 1220 (610) | 1320 (710) | 1440 (830) | PROCEDURE ALTITUDES  |        |      |      |      |      |     |
|             |            |            |            |            | DME GSY              | 5.8    | 5.0  | 4.0  | 3.0  | 2.0  |     |
|             |            |            |            |            | Altitude             | 2470   | 2290 | 1970 | 1650 | 1330 |     |