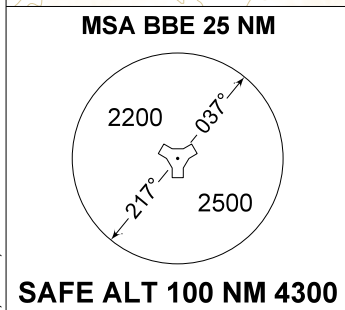
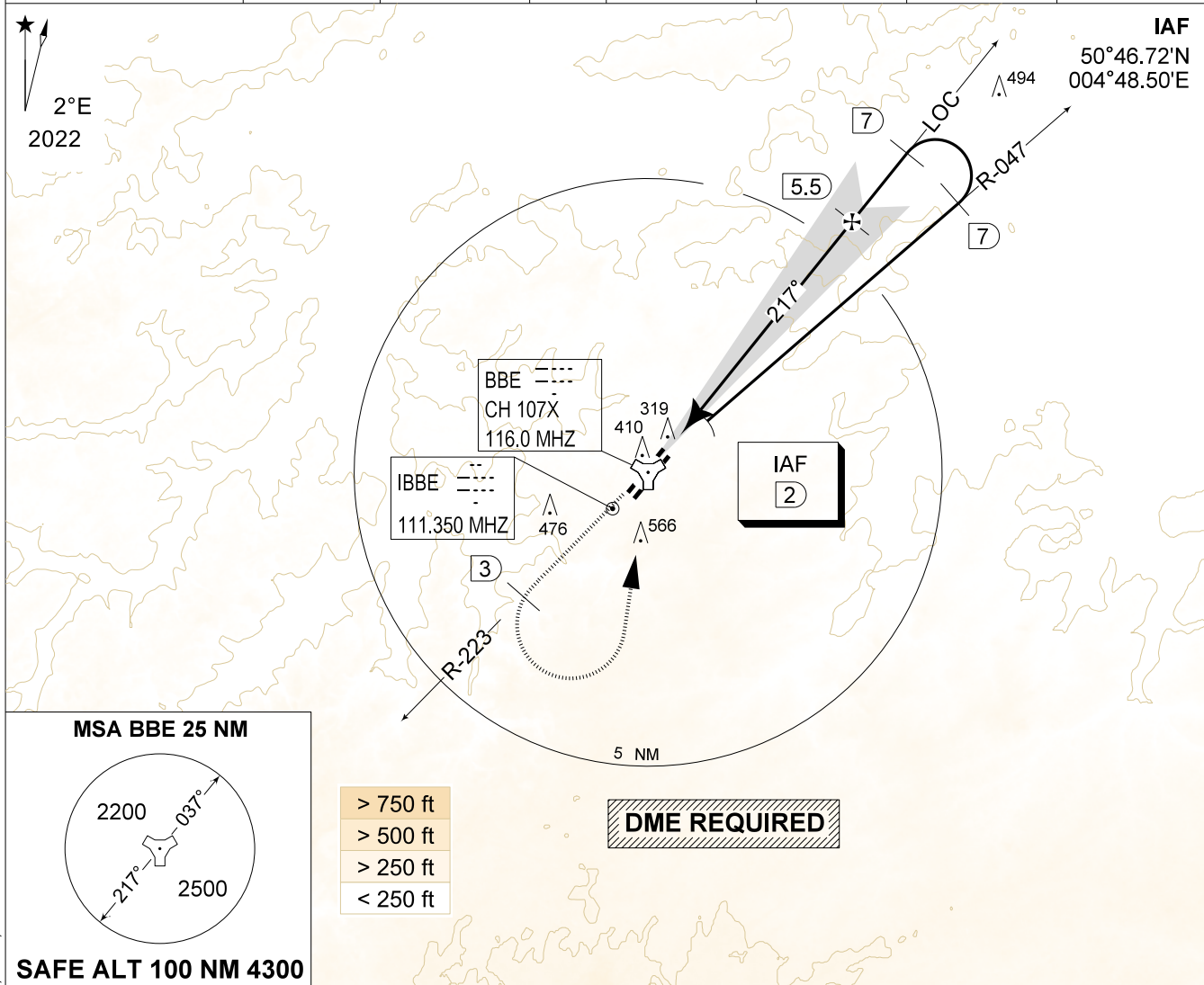


MIPS
INSTRUMENT APPROACH CHART

ILS y or LOC y RWY 22R
BEAUVECHAIN (EBBE)

AD ELEV 362

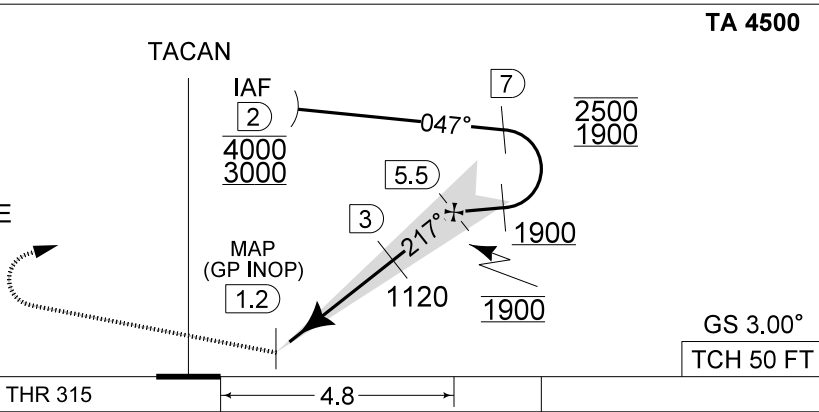
BELGA RADAR 374.400 129.325		BEAUVECHAIN APP 282.100 122.830		BEAUVECHAIN TWR 362.025 130.730		BEAUVECHAIN GND 359.825 121.855	
LOC / DME IBBE 111.350 / 107X	APP COURSE 217°	GS INTCP ALT 1900 FT	GS 3.00°	DA 515	THR 315 FT	ALS 930 M	LDA 7988 FT



> 750 ft
> 500 ft
> 250 ft
< 250 ft

DME BBE	5	4	3	2
Altitude	1760	1440	1120	800
Height	(1444)	(1124)	(804)	(484)

MISSED APPROACH
Climb to 1000 FT RWY track and intercept R-223. At 2 DME past TACAN climb to 3000 FT. Passing 1500 FT or 3 DME whichever comes the latest, turn left inbound IAF.



CAT I

THR 315 4.8

CATEGORY	A
S-ILS 22R	515 - 0.8 200 (200 - 0.8 / 0.9) GS 3.00°
S-LOC 22R	720 - 1.2 405 (500 - 1.2 / 2.1)
S-PAR 22R	534 - 0.8 219 (300 - 0.8 / 1.0) GS 3.00°

ILS y or LOC y RWY 22R

50°45.47' N
004°46.02' E

BEAUVECHAIN (EBBE)

CHANGE: Number of page, minima, THR ELEV, OBST, TWR FREQ, FAF, LDA, note and MSA

BEL DEFENCE, AIR COMPONENT 07-SEP-2023 -THS