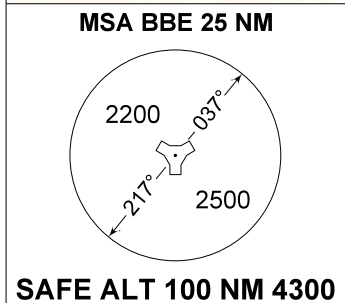
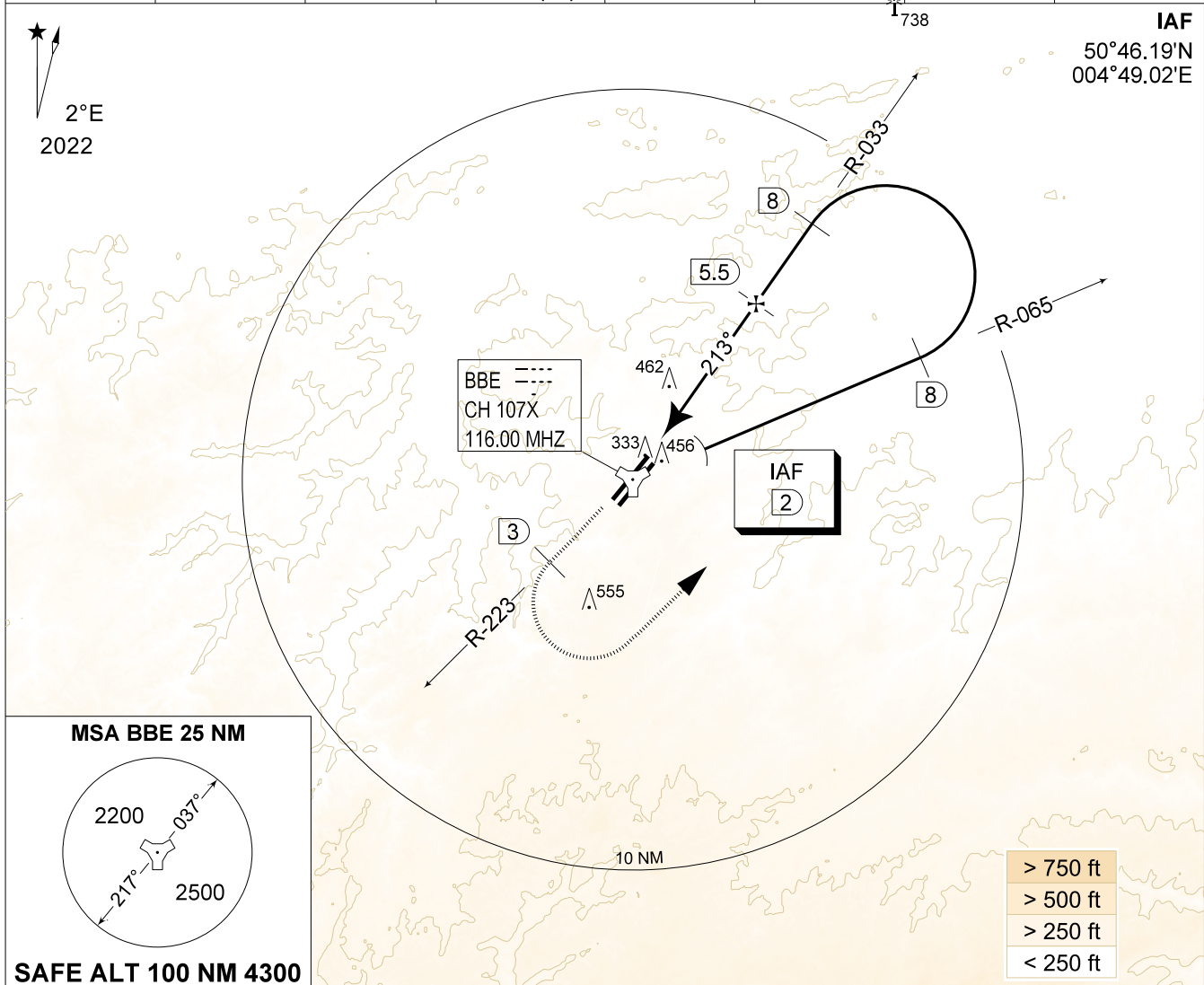


**MIPS**  
**INSTRUMENT APPROACH CHART**

AD ELEV 362

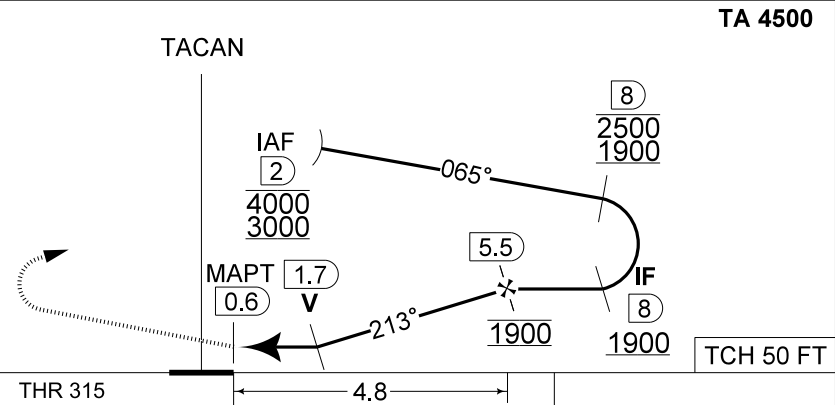
**TACAN z RWY 22R**  
**BEAUVECHAIN (EBBE)**

BELGA RADAR 374.400 129.325		BEAUVECHAIN APP 282.100 122.830		BEAUVECHAIN TWR 362.025 130.730		BEAUVECHAIN GND 359.825 121.855	
TACAN BBE CH107X	APP COURSE 213°	FAF ALT 1900 FT	DESCENT GR 5.24%(3°)	MDA 710	THR 315 FT	ALS 930 M	LDA 7988 FT



DME BBE	5	4	3	2
Altitude	1760	1440	1120	800
Height	(1444)	(1124)	(804)	(484)

**MISSED APPROACH**  
Climb to 1000 FT runway track and intercept R-223. At 2 DME past TACAN climb to 3000 FT. Passing 3 DME, turn left at MAX 220 KIAS (300 KIAS for HPMA) to intercept 8 DME/R-065 outbound and proceed for a TACAN z / ILS z RWY 22R.



CATEGORY	C	D	HPMA
S-TAC 22R	710 - 1.1 395 (400 - 1.1 / 2.1)		
S-PAR 22R	554 - 0.8 239 (300 - 0.8 / 1.1) GS 3.00°	565 - 0.8 250 (300 - 0.8 / 1.2) GS 3.00°	515 - 0.8 200 (200 - 0.8 / 0.9) GS 3.00°

**TACAN z RWY 22R** 50°45.47' N  
004°46.02' E **BEAUVECHAIN (EBBE)**

CHANGE: FAF ALT in the header and missed approach updated

BEL DEFENCE, AIR COMPONENT 07-SEP-2023 -THS