

MIPS
INSTRUMENT DEPARTURE CHART

AD ELEV 362

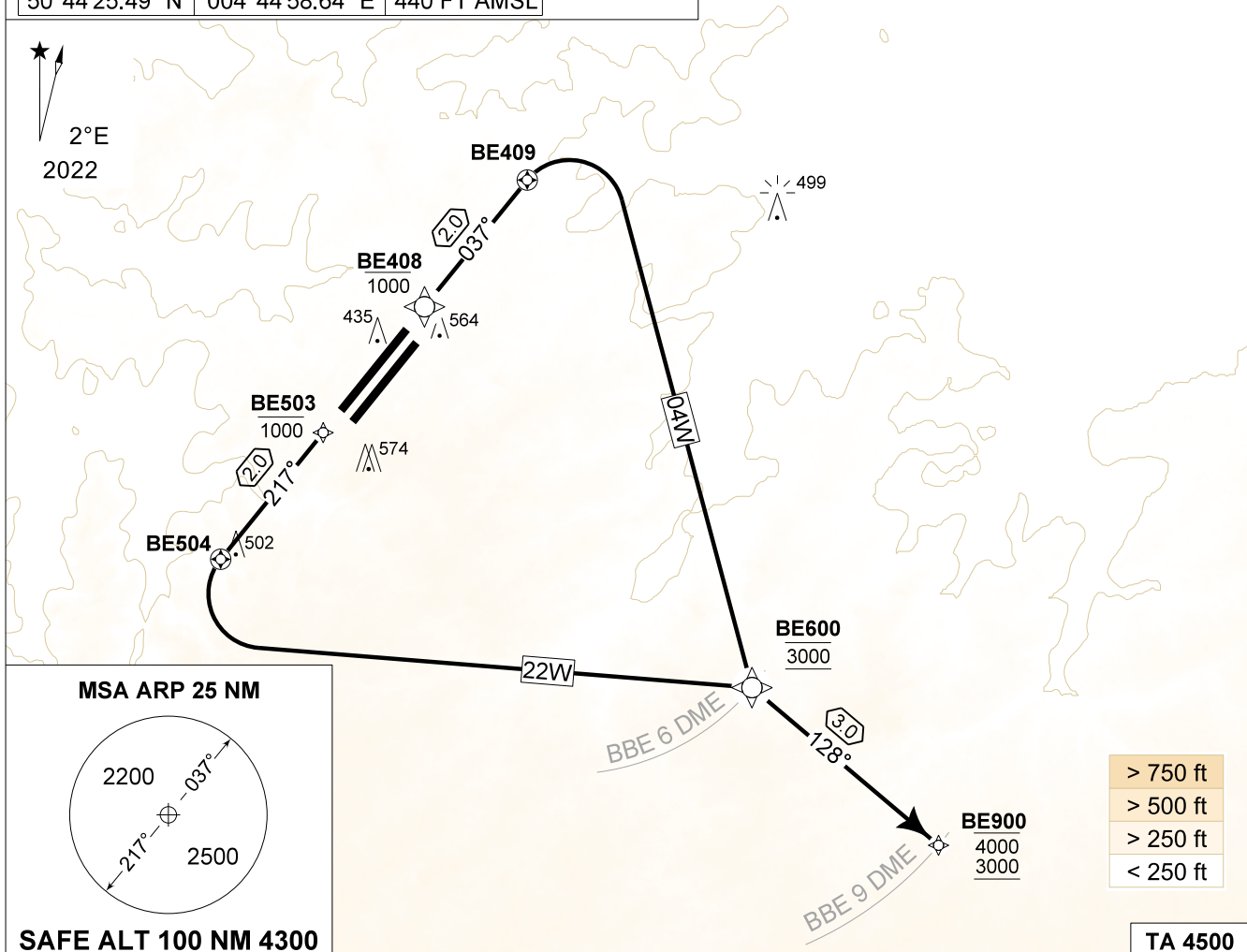
BE 04W - 22W (RNAV1)
BEAUVECHAIN (EBBE)

BEAUVECHAIN GND 359.825 121.855		BEAUVECHAIN TWR 362.025 130.730		BEAUVECHAIN APP 282.100 122.830		BELGA RADAR 374.400 129.325				
TACAN BBE - CH 107X		RWY	PDG		From-To	60	90	120	150	Reason
		04L	4.1%	2.35°	DER-4000	250	380	500	630	ATC
		22R	4.1%	2.35°	DER-4000	250	380	500	630	ATC

NOTE:

- a) ONLY FOR CAT A and CAT H.
- b) DEPARTURE RWY 04R / 22L NOT AUTHORIZED.
- c) DME INFORMATION AVAILABLE UNDER FREQUENCY MHZ.
- d) CLOSE-IN OBSTACLES NOT CONSIDERED TO DETERMINE THE PDG.

50°46'24.83" N	004°46'57.55" E	415 FT AMSL
50°45'46.78" N	004°46'58.85" E	371 FT AMSL
50°44'25.49" N	004°44'58.64" E	440 FT AMSL



BE 04W
RNAV1 overlay (RWY 04L)
13

- Climb to MAX 1000 FT inbound BE408 and contact EBBE APP.
- At BE408, continue climb inbound BE409.
- At BE409, continue climb to 3000 FT and turn right inbound BE600.
- At BE600, proceed inbound BE900 and follow ATC instructions.

BE 22W
RNAV1 overlay (RWY 22R)
13

- Climb to MAX 1000 FT inbound BE503 and contact EBBE APP.
- At BE503, continue climb inbound BE504.
- At BE504, continue climb to 3000 FT and turn left inbound BE600.
- At BE600, proceed inbound BE900 and follow ATC instructions.

BE 04W - 22W (RNAV1)

50°45.47' N
004°46.02' E

BEAUVECHAIN (EBBE)

CHANGE: Scaling plan view

BEL DEFENCE, AIR COMPONENT 22-FEB-2024 - THS