

MIPS
STANDARD ARRIVAL CHART

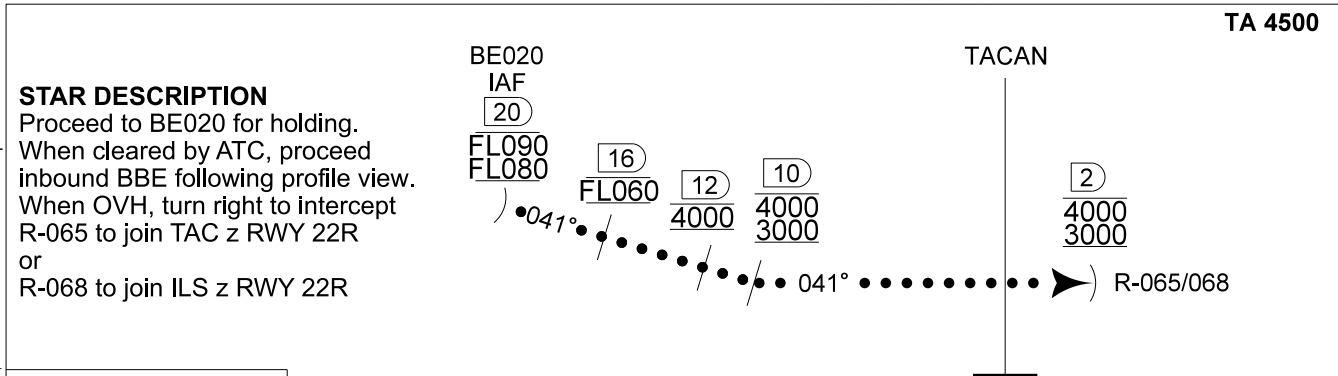
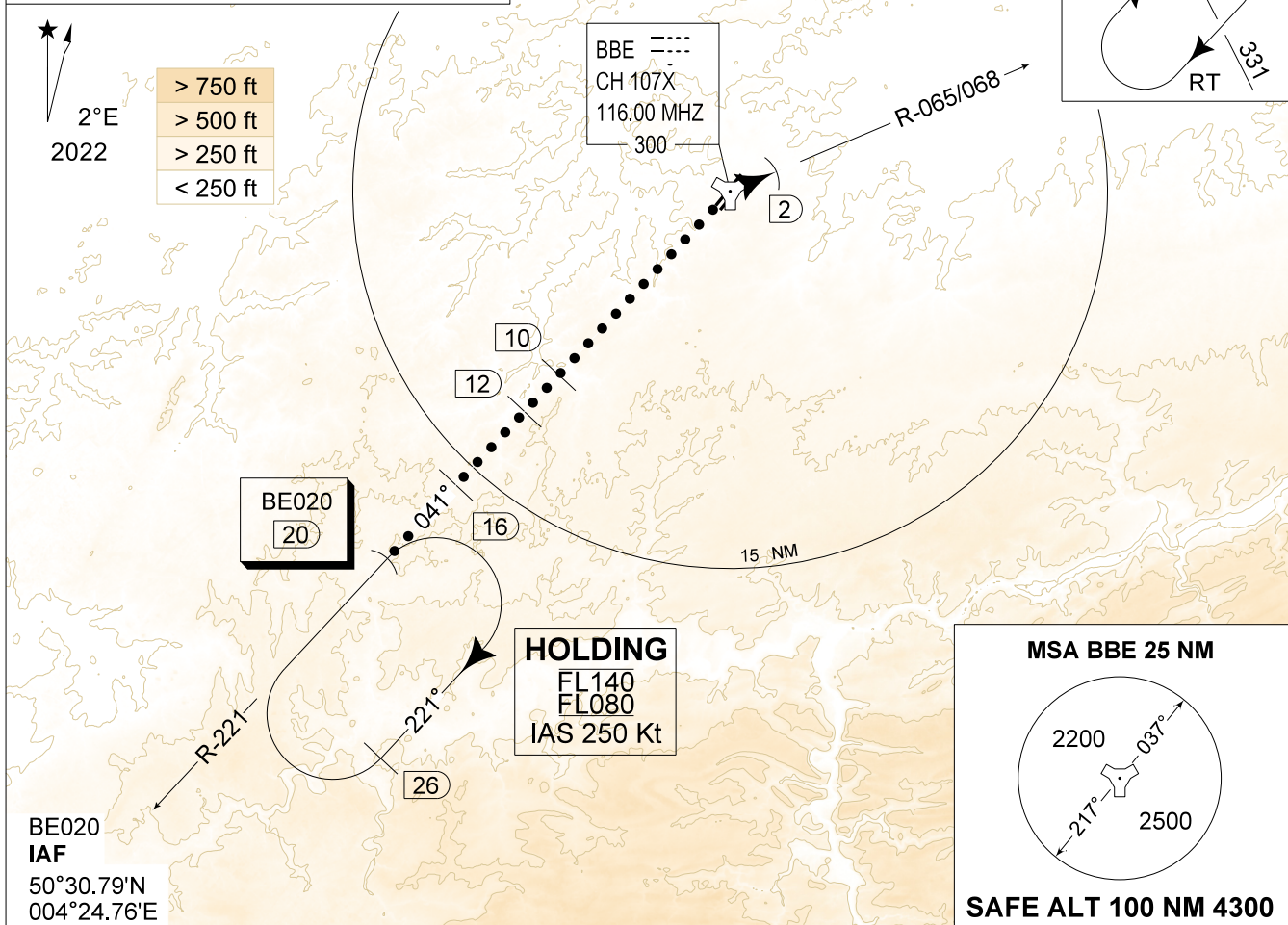
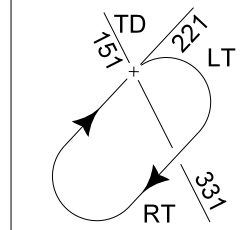
HPMA STAR TACAN RWY 22R
BEAUVECHAIN (EBBE)

AD ELEV 362

BELGA RADAR 374.400 129.325		BEAUVECHAIN APP 282.100 122.830		BEAUVECHAIN PAR 378.525 119.630		BEAUVECHAIN TWR 362.025 130.730	
TACAN BBE CH107X	-	-	-	-	THR 315 FT	ALS 930 M	LDA 7988 FT

NOTE:

a) STAR ONLY AUTHORIZED FOR HPMA TO JOIN IAF OF ILS z RWY 22R OR TAC z RWY 22R



CAT I

MIPS	CATEGORY	HPMA
	S-ILS 22R S-PAR 22R	SEE APPROACH CHART
	S-LOC 22R S-TAC 22R	SEE APPROACH CHART

HPMA STAR TACAN RWY 22R 50°45.47' N 004°46.02' E **BEAUVECHAIN (EBBE)**

CHANGE: Number of page, LDA, MSA and TWR FREQ updated

BEL DEFENCE, AIR COMPONENT 07-SEP-2023 - THS