

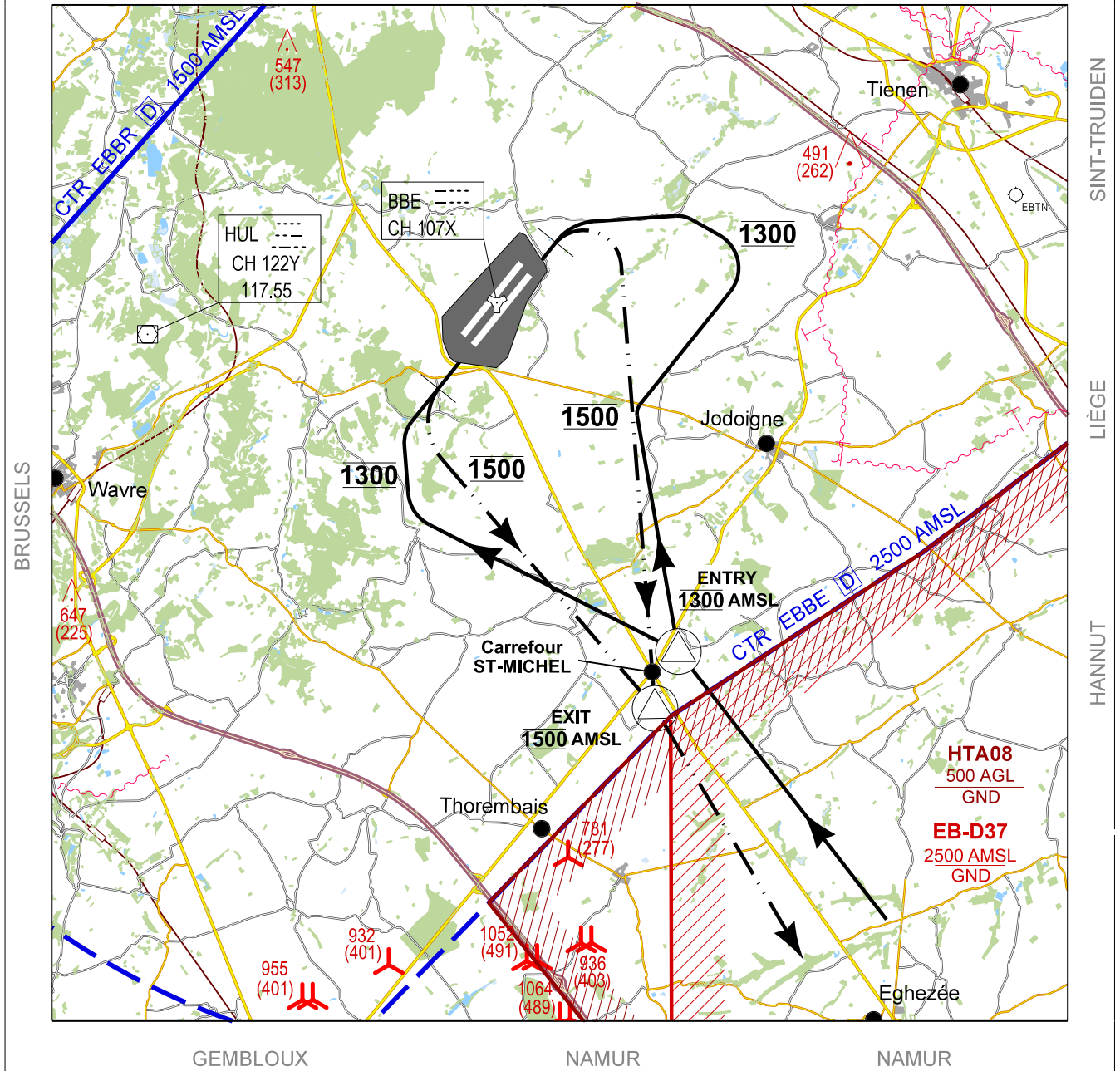
VISUAL APPROACH CHART

AD ELEV 362

**PROP RWY 04R- 22L
BEAUVECHAIN (EBBE)**

BELGA RADAR 374.400 129.325	BEAUVECHAIN APP 282.100 122.830	BEAUVECHAIN TWR 362.025 130.730	BEAUVECHAIN GND 359.825 121.855
GOETSENHOVEN RADIO 125.380	TACAN BBE - CH 107X	ALS 04R 260 M	ALS 22L 260 M
		LDA 04R 7837 FT	LDA 22L 7834 FT

BRUSSELS LEUVEN DIEST



APPROACH:

- Stay **NORTH-EAST** of the road **EGHEZEE-PIETREBAIS (N91)** till ENTRY point: 50°40.67' N - 004°49.94' E - North-East of "Carrefour St-Michel" (Crossing of the road Pietrebaix - Eghezée).

DEPARTURE:

- EXIT point: 50°39.77' N - 004°49.26' E - South-West of "Carrefour St-Michel" (Crossing of the road Gembloux - Jodoigne with the road Pietrebaix - Eghezée).
- Stay **SOUTH-WEST** of the road **EGHEZEE-PIETREBAIS (N91)**.

"LIGHT AIRCRAFT ONLY"

PROP RWY 04R- 22L

50°45.47' N
004°46.02' E

BEAUVECHAIN (EBBE)

CHANGE: Number of page and TWR FREQ

BEL DEFENCE, AIR COMPONENT 07-SEP-2023 - THS