

MIPS
INSTRUMENT APPROACH CHART

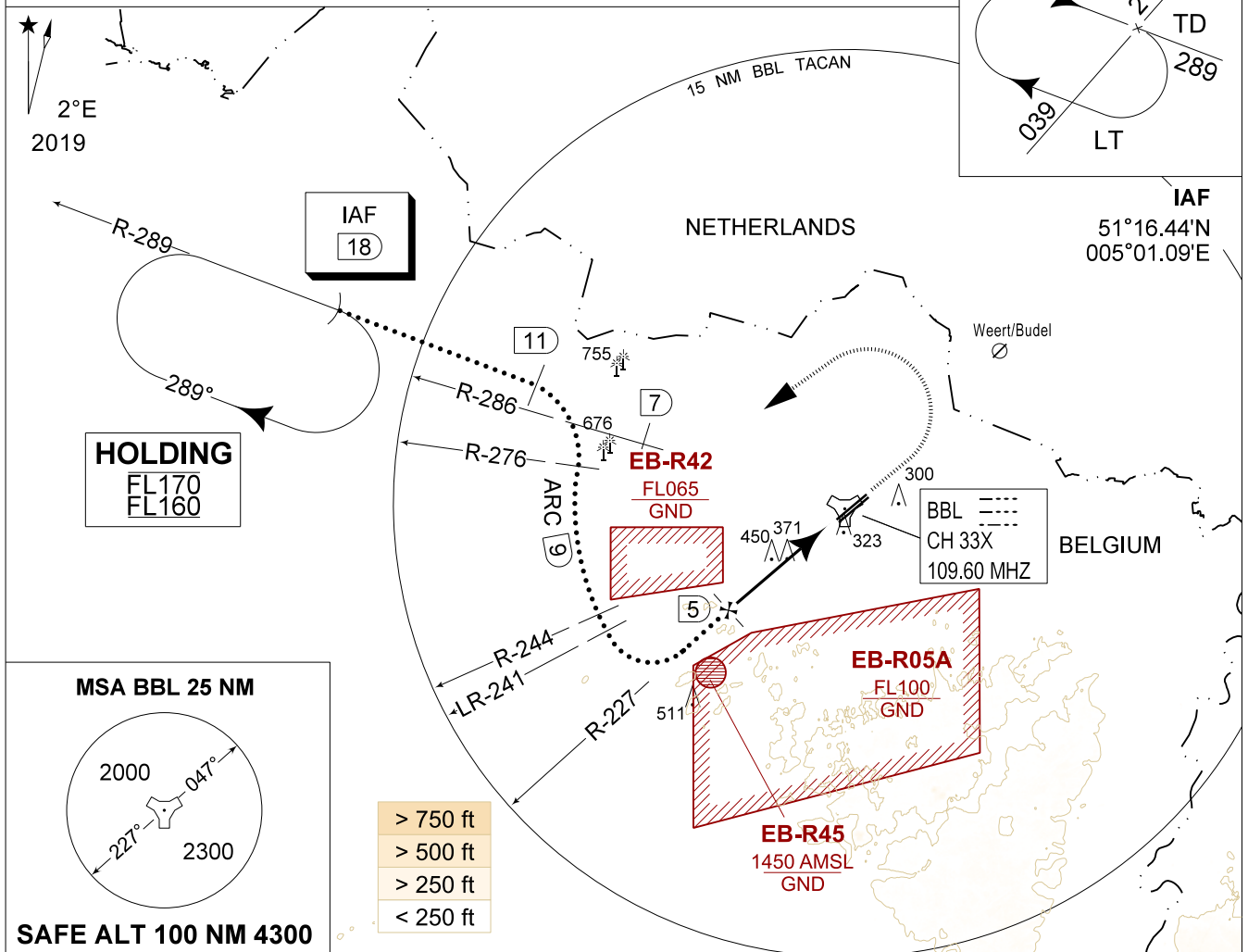
AD ELEV 192

HPMA-TACAN RWY 05L
KLEINE-BROGEL (EBBL)

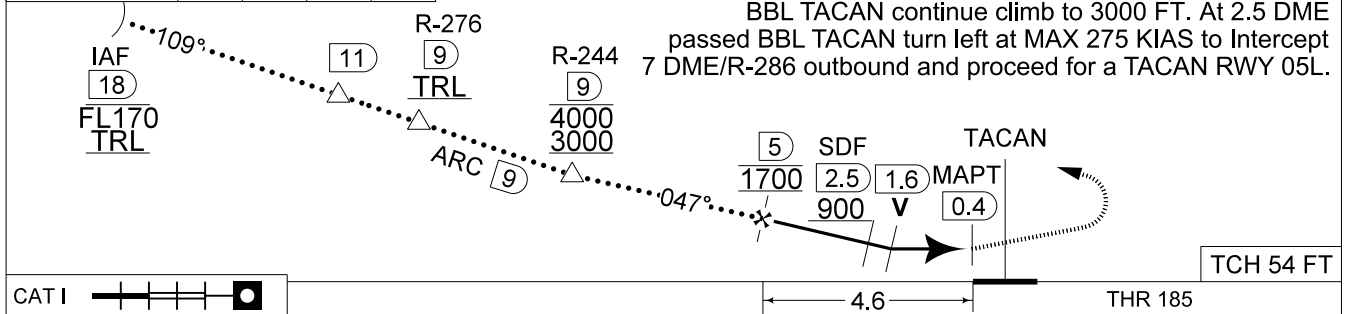
BELGA RADAR 374.400 129.325		KLEINE-BROGEL APP 337.600 134.480		KLEINE-BROGEL TWR 248.075 134.105		KLEINE-BROGEL GND 362.775 122.100	
LOC / DME BBL CH 33X	APP COURSE 047°	FAF ALT 1700 FT	DESCENT GR 5.24%(3.00°)	MDA 620	THR 185	ALS 930 M	LDA 8104 FT

CAUTION:

a) ATC MONITORING REQUIRED TO REMAIN CLEAR OF EB-R42



DME BBL	5	4	3	2
Altitude	1700	1380	1060	740
Height	(1515)	(1195)	(875)	(555)



CAT I | TCH 54 FT | THR 185

CATEGORY	HPMA
S-TAC 05L	620 - 1.3 435 (500 - 1.3 / 2.3)
S-PAR 05L	385 - 0.8 200 (200 - 0.8 / 0.9) GS 3.00°
CIRCLING	770 - 3.2 578 (600 - 3.2)

HPMA-TACAN RWY 05L 51°10.10' N 005°28.19' E **KLEINE-BROGEL (EBBL)**

CHANGE: CAUTION

BEL DEFENCE, AIR COMPONENT 30-NOV-2023 - THS