

MIPS

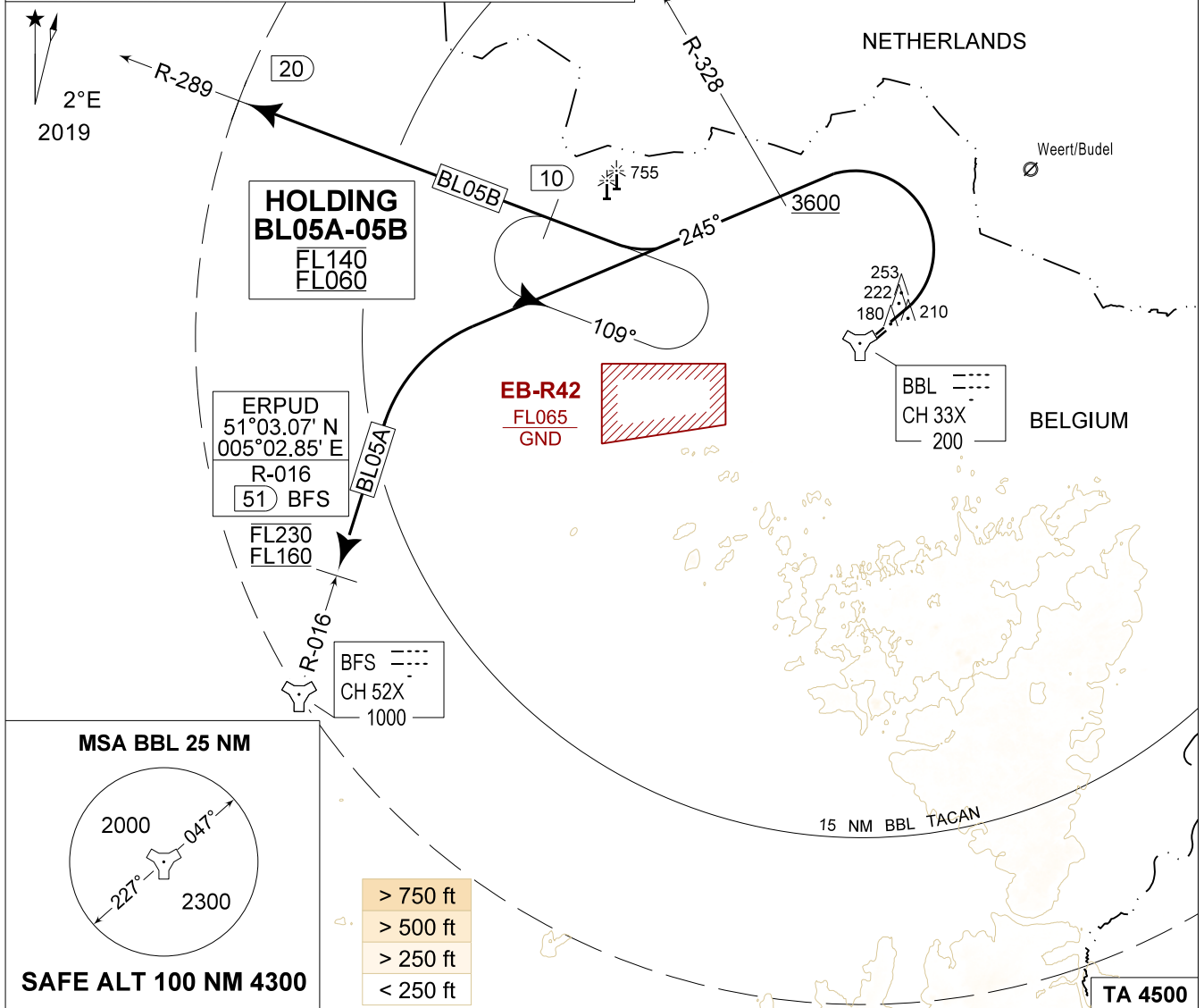
INSTRUMENT DEPARTURE CHART

AD ELEV 192

**BL 05A - 05B
KLEINE-BROGEL (EBBL)**

KLEINE-BROGEL GND 362.775 122.100		KLEINE-BROGEL TWR 248.075 134.105		KLEINE-BROGEL APP 337.600 134.480		BELGA RADAR 374.400 129.325					
TACAN BBL - CH 33X		RWY 05	PDG 5.24%	3.00°	From-To DER-FL050	120 640	180 960	240 1280	300 1600	360 1920	Reason ATC

CAUTION:
a) ATC MONITORING REQUIRED TO REMAIN WITHIN BEL
b) NO TURN BEFORE 1.3 DME BBL
c) FIRST TURN MAX 210 KIAS



<p>BL 05A (RWY 05) 29</p>	<ul style="list-style-type: none"> - Climb RWY heading and contact EBBL APP. - Pass 600 FT AMSL or 1.3 DME BBL, whichever comes the latest, turn left track 245° at MAX 210 KIAS. - Pass R-328 at or above 3600 FT AMSL. - Passing 4500 FT AMSL contact BELGA RADAR. - Intercept R-016 inbound BFS TACAN. - Proceed to entry REMBA corridor ERPUD, 51 DME R-016 BFS TACAN between FL160 and FL230 as instructed and maintain level.
<p>BL 05B (RWY 05) 28</p>	<ul style="list-style-type: none"> - Climb RWY heading and contact EBBL APP. - Pass 600 FT AMSL or 1.3 DME BBL, whichever comes the latest, turn left track 245° at MAX 210 KIAS. - Pass R-328 at or above 3600 FT AMSL. - Passing 4500 FT AMSL contact BELGA RADAR. - Intercept R-289 outbound BBL TACAN. Follow R-289 till 20 DME.

BL 05A - 05B

51°10.10' N
005°28.19' E

KLEINE-BROGEL (EBBL)

CHANGE: CAUTION

BEL DEFENCE, AIR COMPONENT 30-NOV-2023 - THS