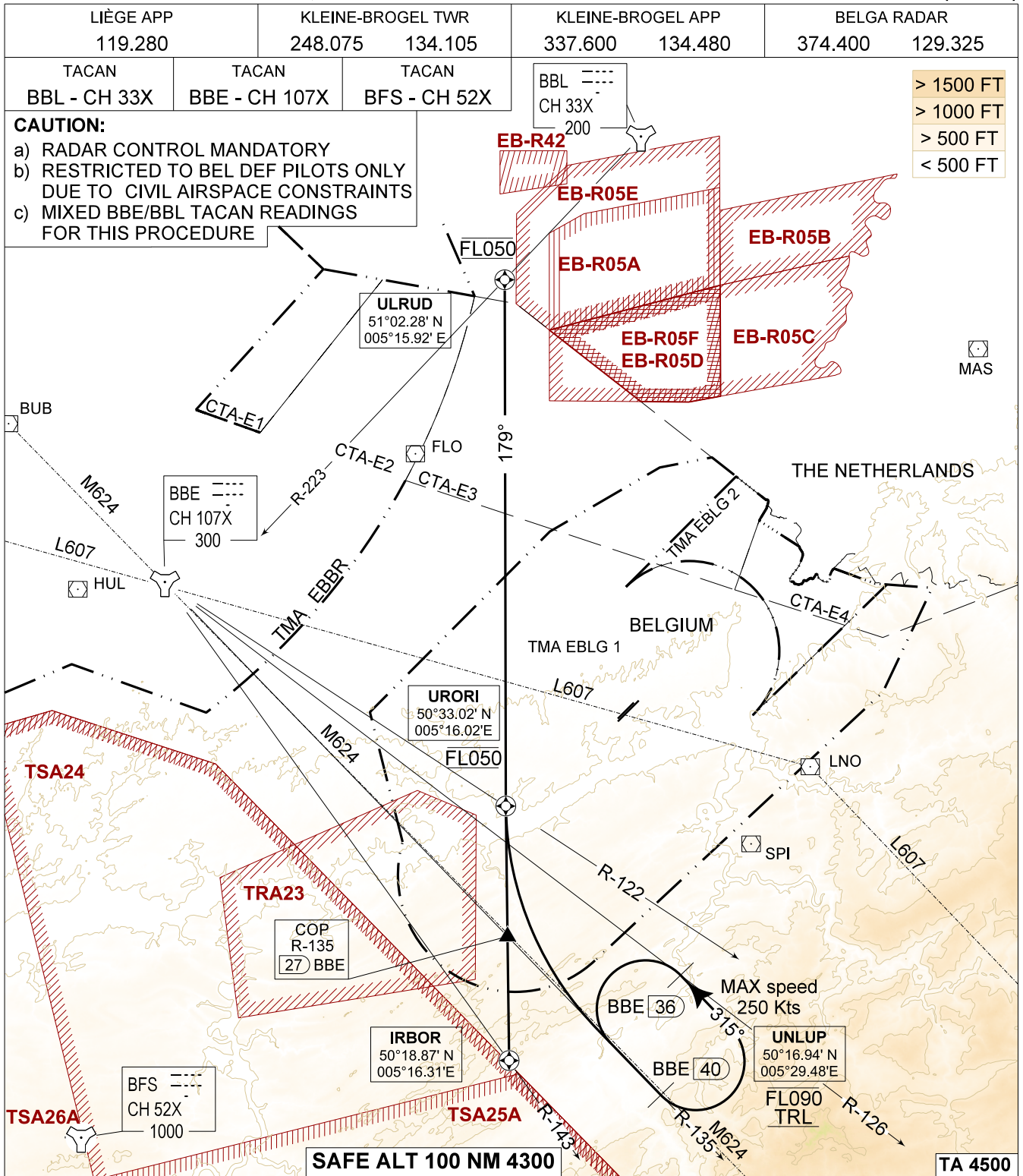


**NATIONAL
CORRIDOR EBBL to TSA 24, 25 & 26**

**SINT-TRUIDEN CORRIDOR
KLEINE-BROGEL (EBBL)**



SINT-TRUIDEN CORRIDOR

- Contact LIÈGE APP before entering corridor, if no contact can be established with LIÈGE APP, BELGA RADAR shall be contacted on BELGA FIC freq 278.475 or 129.325.
- On track 179° pass ULRUD (10.8 DME / R-222 BBL) at FL050 and maintain level.
- If required proceed to UNLUP when passing URORI (23 DME / R-122 BBE) and contact BELGA RADAR.
- Passing COP (27 DME / R-135 BBE) at FL050, contact BELGA RADAR as directed and proceed inbound entry point IRBOR (33 DME / R-143 BBE).
- Contact EFFLUX as directed.

SINT-TRUIDEN CORRIDOR

51°10.10' N
005°28.19' E

KLEINE-BROGEL (EBBL)

CHANGE: EB-R05F added

BEL DEFENCE, AIR COMPONENT 21-MAR-2024 - THS