

**MIPS**

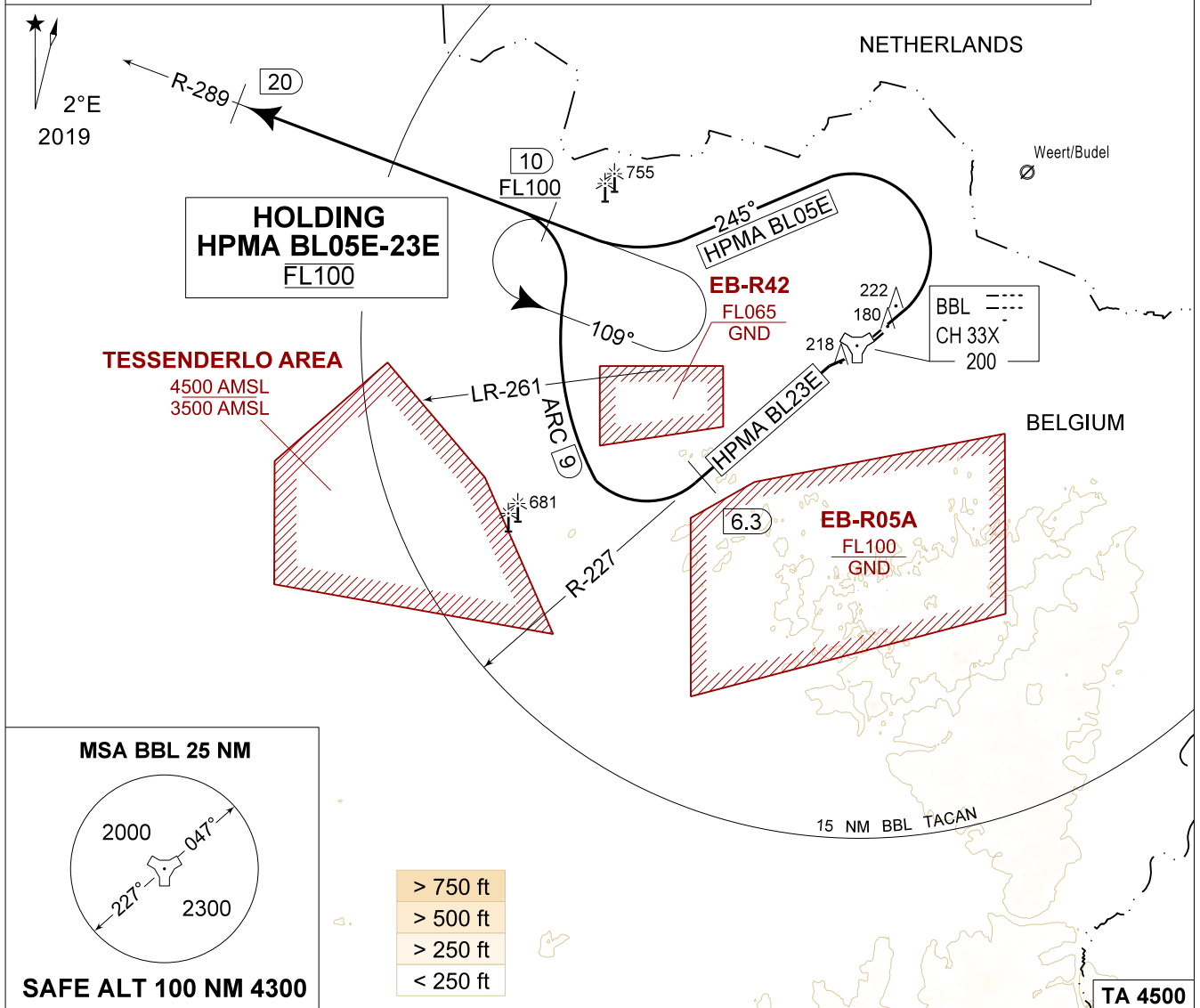
**INSTRUMENT DEPARTURE CHART**

AD ELEV 192

**HPMA BL 05E- 23E  
KLEINE-BROGEL (EBBL)**

KLEINE-BROGEL GND 362.775 122.100	KLEINE-BROGEL TWR 248.075 134.105		KLEINE-BROGEL APP 337.600 134.480		EFFLUX: TAD as assigned BELGA RADAR: 374.400					
TACAN BBL - CH 33X	RWY <b>05</b>	PDG 10.51% 6.00°		From-To DER-TRL	120 1280	180 1920	240 2250	300 3190	360 3830	Reason <b>ATC</b>
<b>CAUTION:</b>	<b>23</b>	10.51%	6.00°	DER-TRL	1280	1920	2250	3190	3830	<b>ATC</b>

- a) CLIMB AT MNM 6° (10.51%) TO REACH FL100 BEFORE CROSSING BBL R-289 / 10 DME
- b) BL 05E: ATC MONITORING REQUIRED TO REMAIN WITHIN BEL
- c) BL 23E: ATC MONITORING REQUIRED TO REMAIN WITHIN BEL/TO REMAIN CLEAR OF EB-R42



<p>HPMA BL 05E (RWY 05) 28</p>	<ul style="list-style-type: none"> <li>- Climb RWY heading and contact EBBL APP.</li> <li>- Pass 600 FT AMSL or 1.3 DME BBL, whichever comes the latest, turn left track 245° at MAX 300 KIAS.</li> <li>- Intercept R-289 outbound BBL TACAN.</li> <li>- Pass 10 DME / R-289 at or above FL100.</li> <li>- Contact EFFLUX on the assigned TAD when passing FL100 or BELGA RADAR as instructed.</li> <li>- Follow R-289 till 20 DME (unless instructed otherwise).</li> </ul>
<p>HPMA BL 23E (RWY 23) 34</p>	<ul style="list-style-type: none"> <li>- Climb RWY heading and contact EBBL APP.</li> <li>- Intercept R-227 outbound BBL TACAN.</li> <li>- At 6.3 DME turn right to follow the arc at 9 DME BBL.</li> <li>- Passing R-261, turn left to intercept R-289 outbound BBL TAC.</li> <li>- Pass 10 DME / R-289 at or above FL100.</li> <li>- Contact EFFLUX on the assigned TAD when passing FL100 or BELGA RADAR as instructed.</li> <li>- Follow R-289 till 20 DME (unless instructed otherwise).</li> </ul>

**HPMA BL 05E- 23E**

51°10.10' N  
005°28.19' E

**KLEINE-BROGEL (EBBL)**

CHANGE: CAUTION and SID instructions

BEL DEFENCE, AIR COMPONENT 30-NOV-2023 - THS