

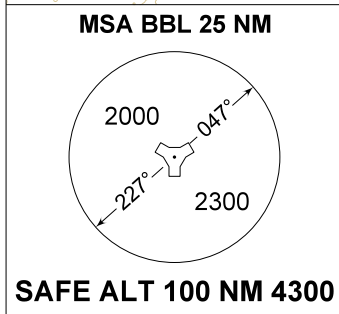
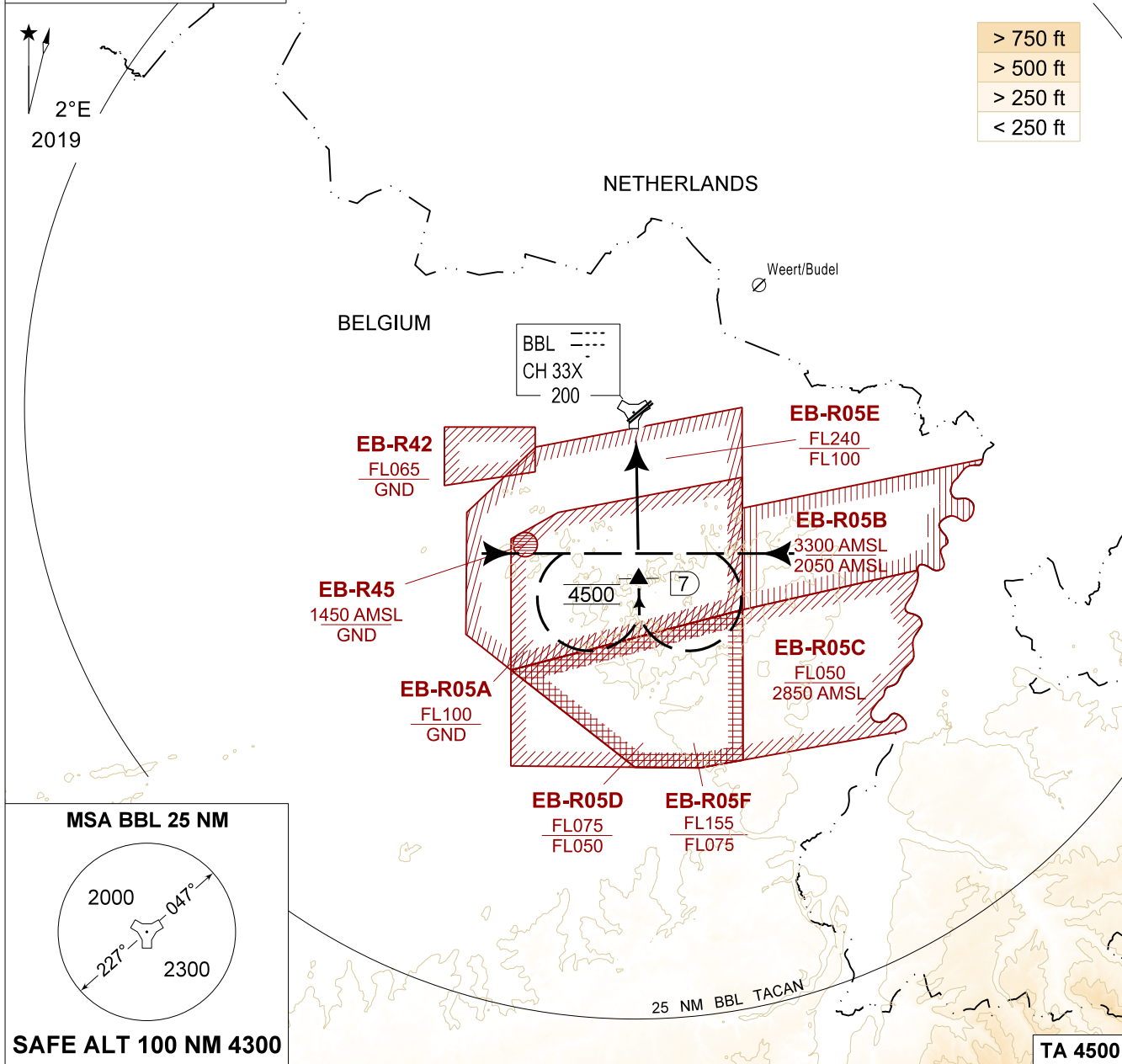
MIPS
INSTRUMENT DEPARTURE CHART

AD ELEV 192

PAMPA
HELCHTEREN RANGE

PAMPA RANGE 389.575 251.075	KLEINE-BROGEL TWR 248.075 134.105	KLEINE-BROGEL APP 337.600 134.480	BELGA RADAR 374.400 129.325
--------------------------------	--------------------------------------	--------------------------------------	--------------------------------

TACAN
BBL - CH 33X



PAMPA

- When leaving PAMPA RANGE, perform a procedure turn to the south.
- Intercept R-177 inbound BBL TACAN.
- Pass 7 DME / R-177 at 4500 FT AMSL.
- Proceed with a Kleine-Brogel SID as cleared by ATC.

CHANGE: EB-R05F added

BEL DEFENCE, AIR COMPONENT 21-MAR-2024 - THS

PAMPA

51°10.10' N
005°28.19' E

HELCHTEREN RANGE