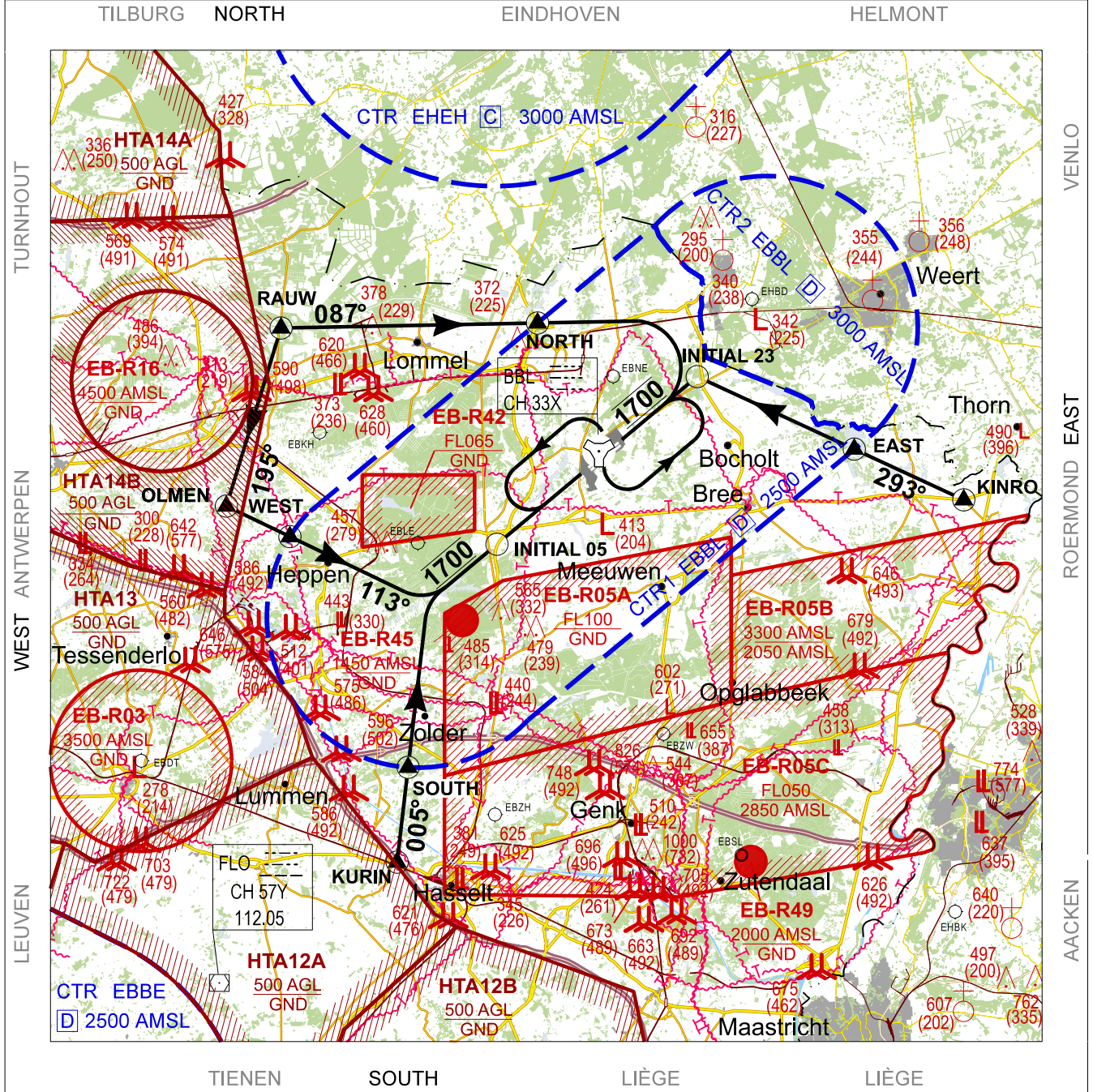


**VISUAL APPROACH CHART**

AD ELEV 192

**APP RWY 05L - 23R  
KLEINE-BROGEL (EBBL)**

BELGA RADAR 374.400 129.325	KLEINE-BROGEL APP 337.600 134.480	KLEINE-BROGEL TWR 248.075 134.105	KLEINE-BROGEL GND 362.775 122.100
TACAN BBL - CH 033X	-	-	ALS 930 M



**Visual approach altitude 1700 FT mandatory.**

- RAUW: 51°14.30' N - 005°11.22' E - R-291 BBL 11.3 DME.
- NORTH: 51°14.49' N - 005°24.73' E - R-335 BBL 4.9 DME.
- EAST: 51°10.29' N - 005°41.42' E - R-087 BBL 8.5 DME.
- KINRO: 51°08.59' N - 005°47.21' E - R-096 BBL 12.3 DME.
- SOUTH: 50°59.76' N - 005°17.94' E - R-210 BBL 12.0 DME.
- KURIN: 50°56.62' N - 005°17.37' E - R-205 BBL 15.0 DME.
- WEST: 51°07.40' N - 005°11.70' E - R-255 BBL 10.5 DME.
- OLMEN: 51°08.40' N - 005°08.35' E - R-262 BBL 12.4 DME.

**ACTIVITY AT SURROUNDING CIVIL AIRFIELDS  
(EHBD, EBKH, EBLE, EBZH, EBZW, EBSL)  
CAN BE CHECKED WITH ATC.  
CAUTION SEVESO SITE AT  
51°03.899'N - 005°10.463'E**

**APP RWY 05L - 23R**

51°10.10' N  
005°28.19' E

**KLEINE-BROGEL (EBBL)**

CHANGE: APP and TWR FREQ updated

BEL DEFENCE, AIR COMPONENT 07-SEP-2023 - THS