

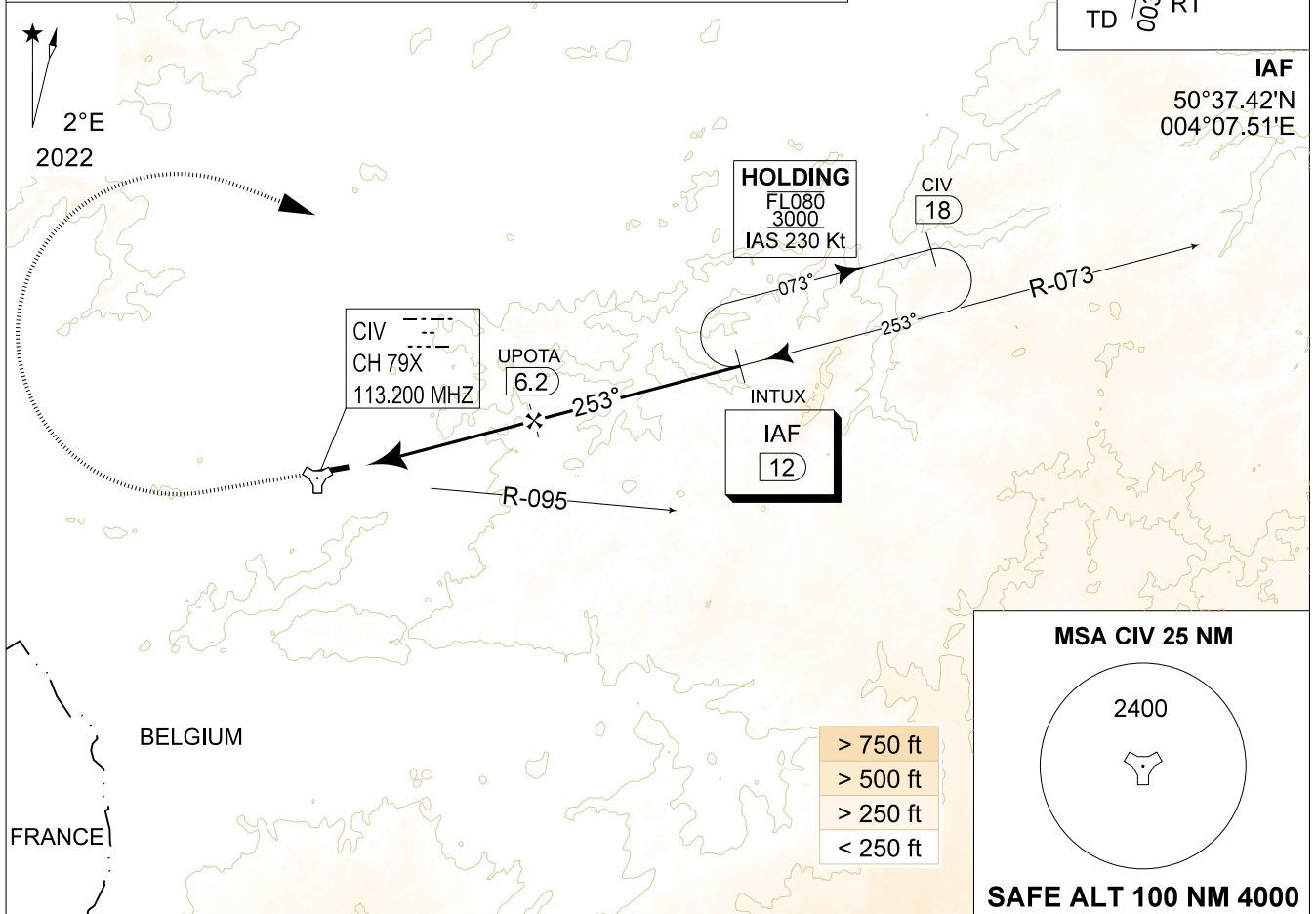
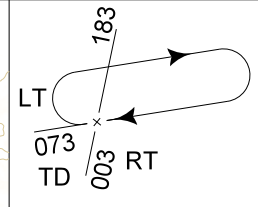
**MIPS**  
**INSTRUMENT APPROACH CHART**

**TACAN RWY 26**  
**CHIEVRES (EBCV)**

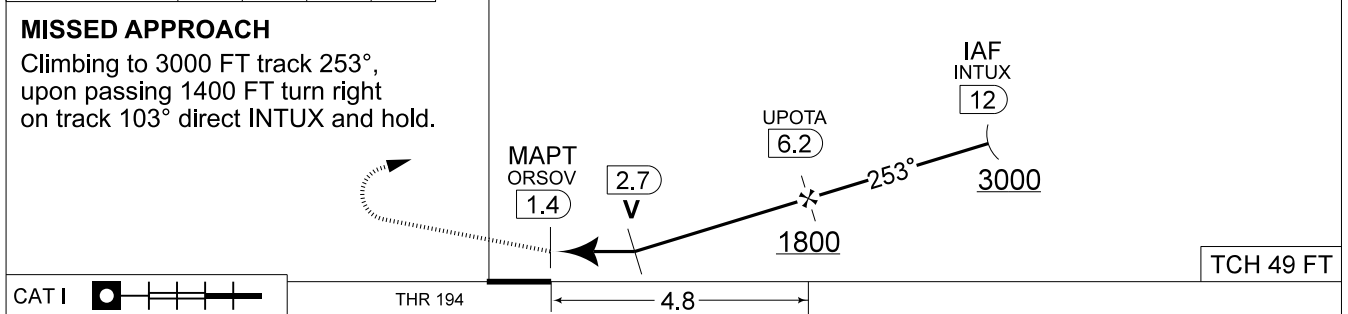
AD ELEV 194

ATIS 342.425		BRUSSELS APP 126.630 369.200		CHIEVRES TWR 128.855 232.525		CHIEVRES GND 141.750 387.700	
TAC CIV CH 79X	APP COURSE 253°	FAF ALT 1800 FT	DESCENT GR 5.32%(3.04°)	MDA 670	THR 194 FT	ALS 914 M	LDA 8203 FT

- CAUTION:**
- a) MISSED APPROACH REQUIRES USE OF RNAV OR ATC RADAR MONITORING.
  - b) REMAIN NORTH OF CIV R-095 TO AVOID RESTRICTED AIRSPACE.
  - c) CIRCLING NOT AUTHORIZED NORTH OF RWY 08-26



DME CIV	6	5	4	3	TACAN	TA 4500
Altitude Height	1730 (1536)	1410 (1216)	1090 (896)	770 (576)		



CAT I	THR 194	4.8	TCH 49 FT	
CATEGORY	A	B	C	D
S-TAC 26	670 - 1.6 476 (500 - 1.6 / 2.5)			
CIRCLING	680 - 1.5 486 (500 - 1.5)	710 - 1.6 516 (600 - 1.6)	960 - 2.4 766 (800 - 2.4)	1040 - 3.6 846 (900 - 3.6)

**TACAN RWY 26** 50°34.55'N  
003°49.86'E **CHIEVRES (EBCV)**

CHANGE: SAFE ALT 100 NM and TACAN remarks removed

BEL DEFENCE, AIR COMPONENT 30-NOV-2023 - THS