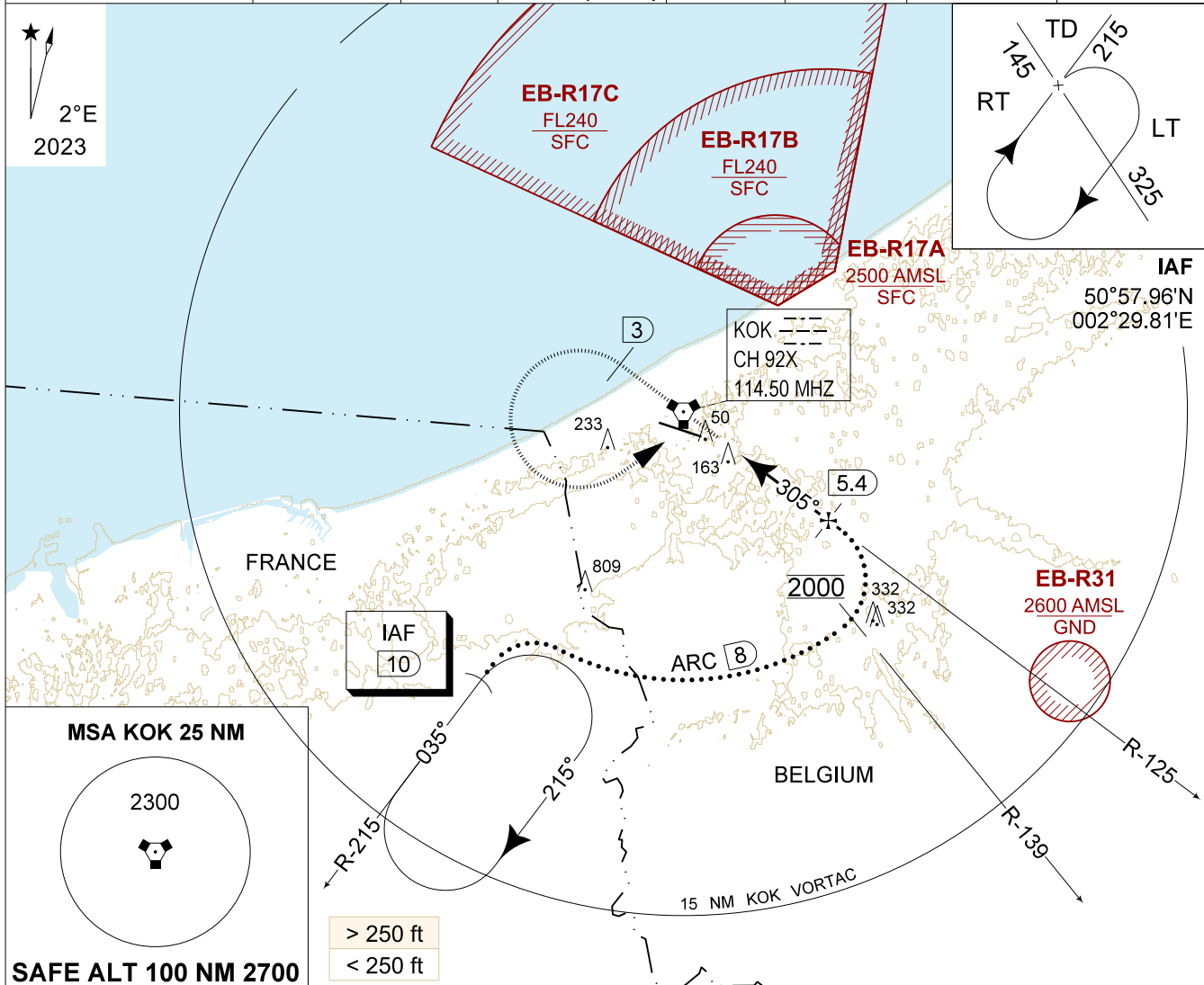


MIPS
INSTRUMENT APPROACH CHART

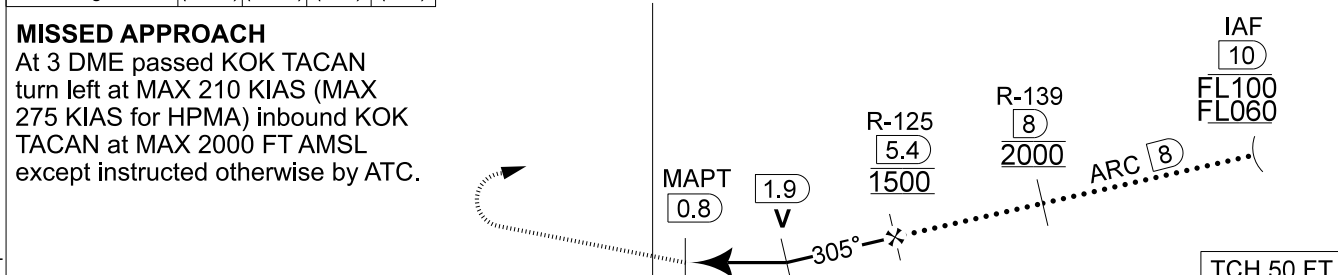
HPMA-TACAN RWY 29
KOKSIJDE (EBFN)

AD ELEV 11

BELGA RADAR 374.400 129.325		KOKSIJDE APP 235.050 121.055		KOKSIJDE TWR 231.800 122.100		KOKSIJDE GND 231.800 122.100	
DVORTAC KOK 114.500 CH 92X	APP COURSE 305°	FAF ALT 1500 FT	DESCENT GR 5.24%(3.00°)	MDA 410	THR 11 FT	ALS 420 M	LDA 8446 FT



DME KOK	5	4	3	2	TA 4500
Altitude	1400	1080	770	450	
Height	(1389)	(1069)	(759)	(439)	



S-ALS	THR 11	4.5	TCH 50 FT
-------	--------	-----	-----------

MIPS	CATEGORY	HPMA
	S-TAC 29	410 - 1.8 399 (400 - 1.8 / 2.2)
	S-PAR 29	211 - 0.8 200 (200 - 0.8 / 1.0) GS 3.00°

HPMA-TACAN RWY 29 51°05.42' N 002°39.17' E **KOKSIJDE (EBFN)**

CHANGE: APP course and Radial profile view

BEL DEFENCE, AIR COMPONENT 05-OCT-2023 - THS