

**MIPS**  
**INSTRUMENT APPROACH CHART**

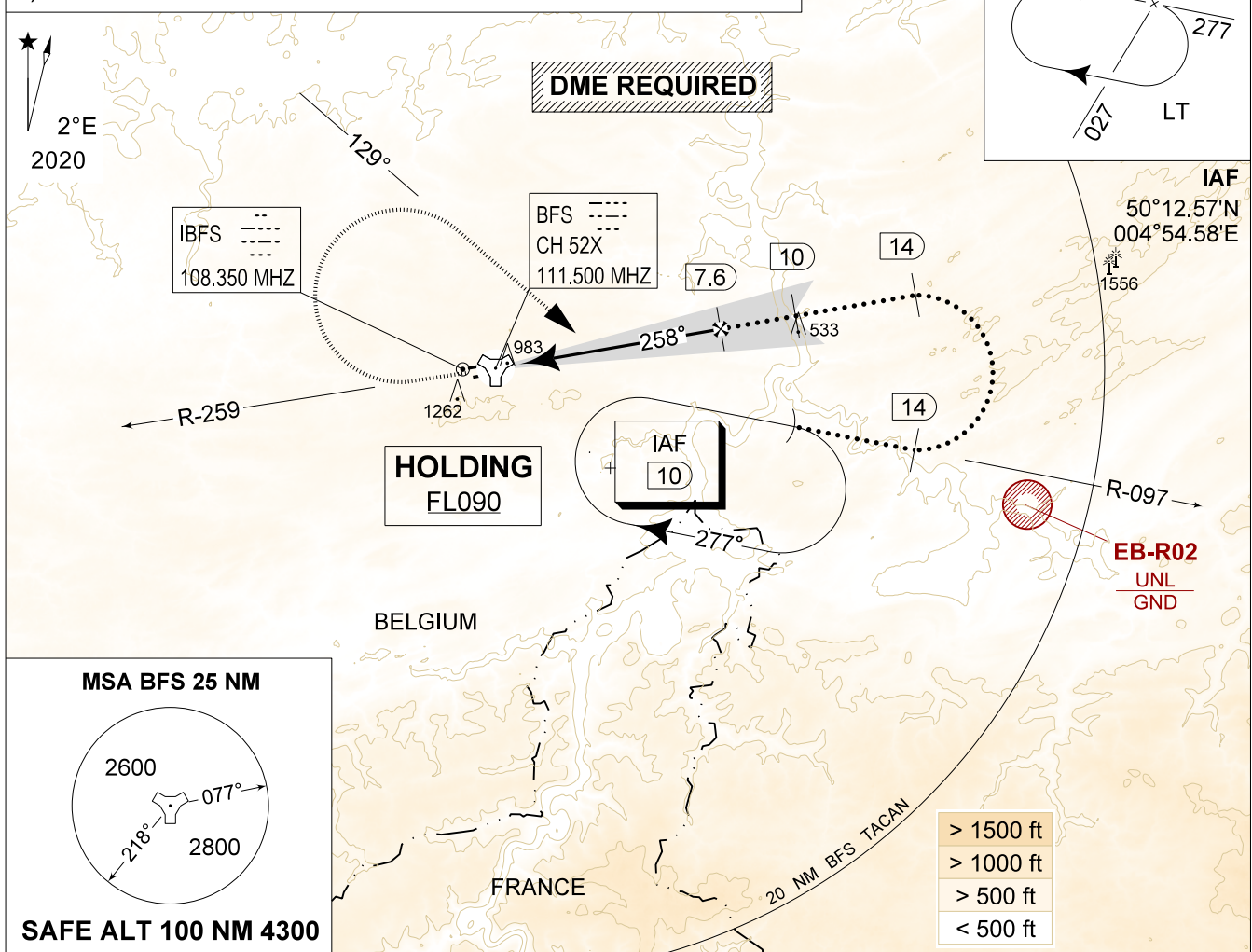
AD ELEV 927

**HPMA-ILS or HPMA-LOC RWY 26R**  
**FLORENNES (EBFS)**

BELGA RADAR 374.400 129.325		FLORENNES APP 372.275 124.380		FLORENNES TWR 234.800 125.880		FLORENNES GND 356.925 122.100	
LOC / DME IBFS 108.350 / 52X	APP COURSE 258°	GS INTCP ALT 3000 FT	GS 2.75°	DA 1124	THR 924 FT	ALS 900 M	LDA 8763 FT

**NOTE:**

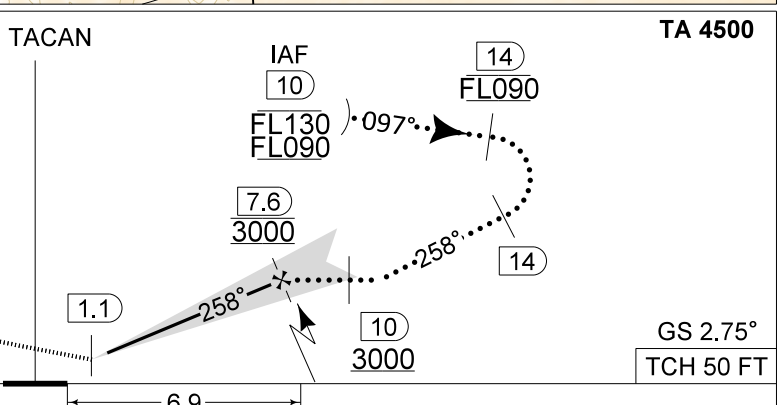
a) DME INFORMATION AVAILABLE UNDER FREQUENCY 111.500 MHZ



DME BFS	7	6	5	4	3	2
Altitude	2840	2550	2260	1970	1670	1380
Height	(1920)	(1630)	(1340)	(1050)	(750)	(460)

**MISSED APPROACH**

Climb to 2000 FT on R-259. Passed 2.5 DME TACAN, continue the climb to 3000 FT and turn right on track 129° at MAX 300 KIAS to intercept IAF ILS RWY 26R.



CAT I  THR 924 6.9 10 3000 14 FL090 TA 4500 GS 2.75° TCH 50 FT

CATEGORY	HPMA
S-ILS 26R	1124 - 0.8 200 (200 - 0.8 / 1.0) GS 2.75°
S-LOC 26R	1320 - 1.3 396 (400 - 1.3 / 2.2)
CIRCLING	1560 - 3.2 633 (700 - 3.2)

**HPMA-ILS or HPMA-LOC RWY 26R** **FLORENNES (EBFS)**

50°14.60' N  
004°38.74' E

CHANGES: EB-R02 updated

BEL DEFENCE, AIR COMPONENT 25-JAN-2024 - THS