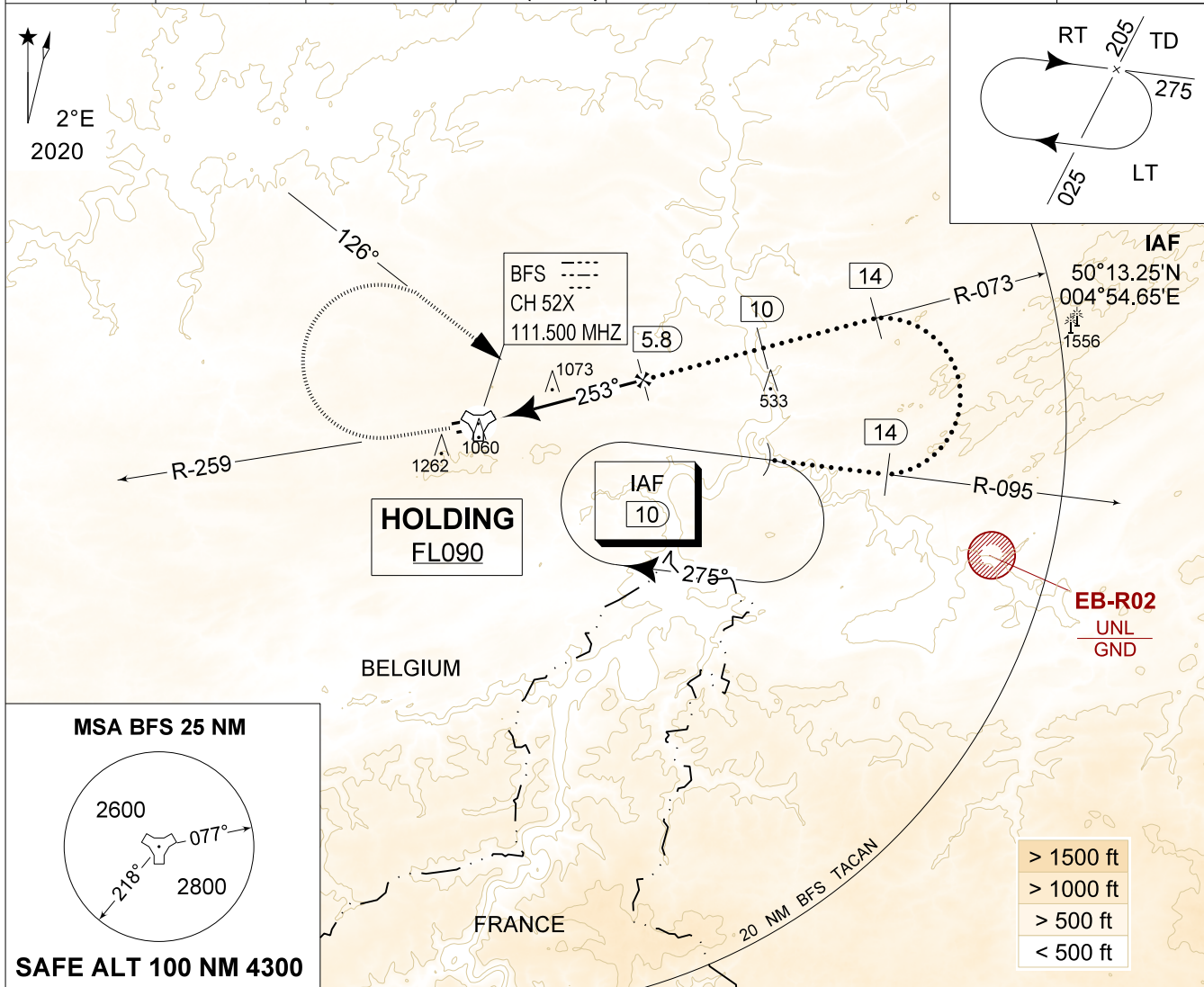


MIPS
INSTRUMENT APPROACH CHART

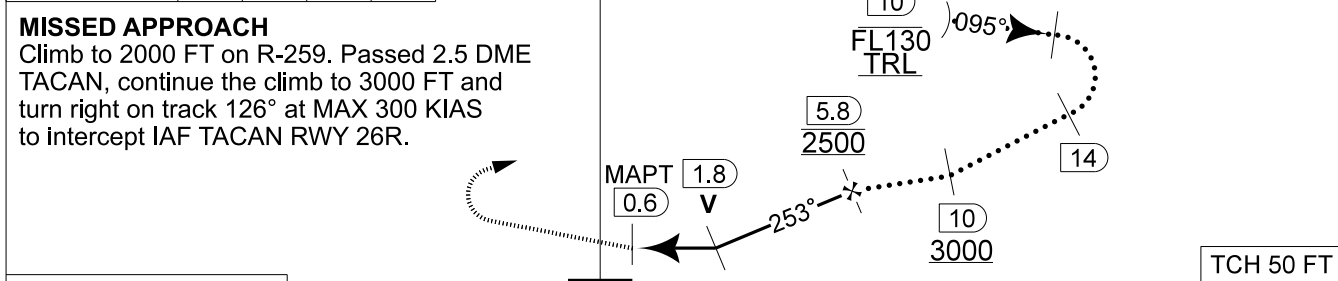
AD ELEV 927

HPMA-TACAN RWY 26R
FLORENNES (EBFS)

BELGA RADAR 374.400 129.325		FLORENNES APP 372.275 124.380		FLORENNES TWR 234.800 125.880		FLORENNES GND 356.925 122.100	
TACAN BFS CH 52X	APP COURSE 253°	FAF ALT 2500 FT	DESCENT GR 4.8%(2.75°)	MDA 1320	THR 924 FT	ALS 900 M	LDA 8763 FT



DME BFS	5	4	3	2	TACAN	TA 4500
Altitude	2250	1960	1670	1380		
Height	(1330)	(1040)	(750)	(460)		



CAT I	THR 924	5.2	
-------	---------	-----	--

CATEGORY	HPMA
S-TAC 26R	1320 - 1.3 396 (400 - 1.3 / 2.2)
CIRCLING	1560 - 3.2 633 (700 - 3.2)

HPMA-TACAN RWY 26R 50°14.60' N
004°38.74' E **FLORENNES (EBFS)**

CHANGES: EB-R02 updated

BEL DEFENCE, AIR COMPONENT 25-JAN-2024 - THS