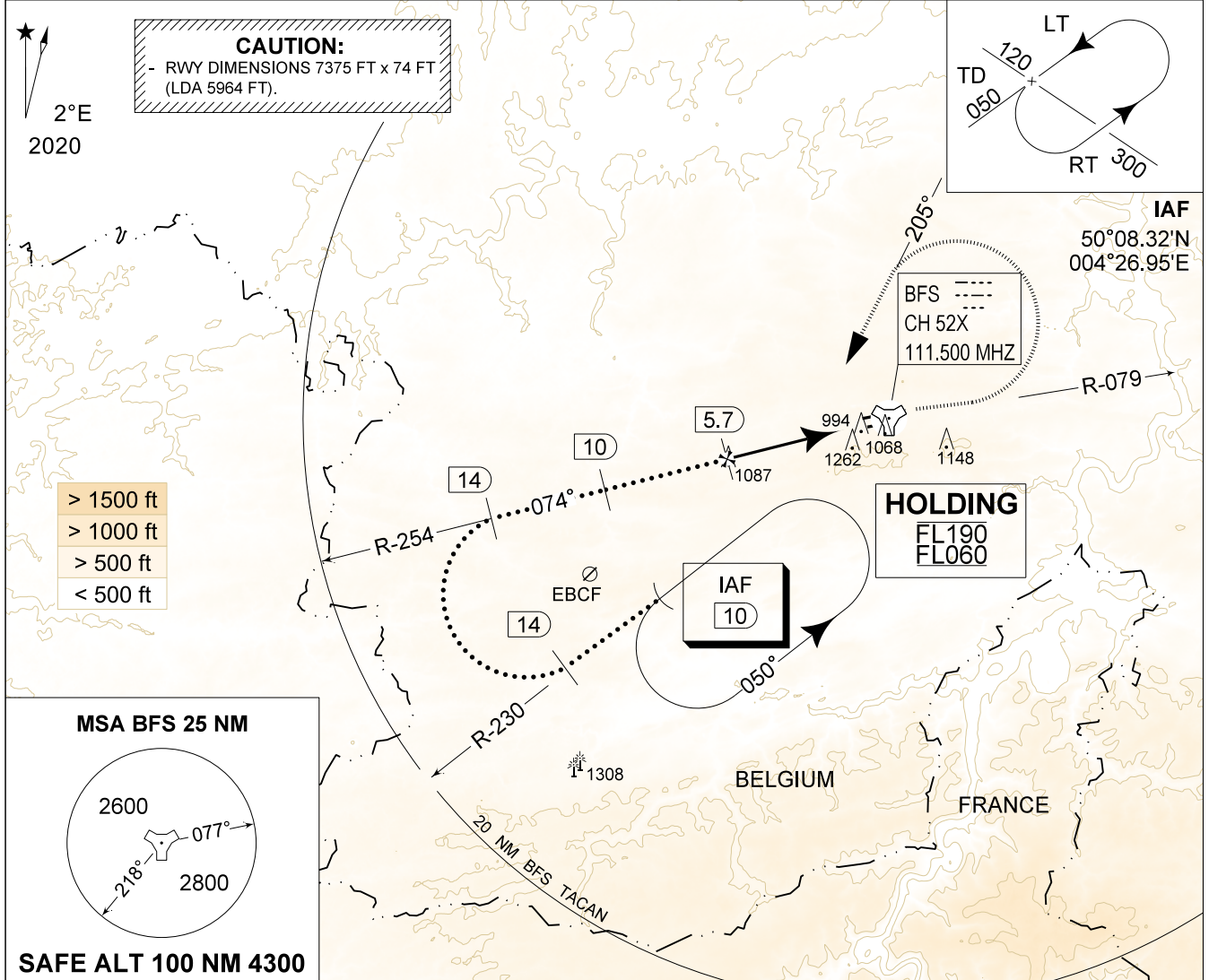


MIPS
INSTRUMENT APPROACH CHART

AD ELEV 927

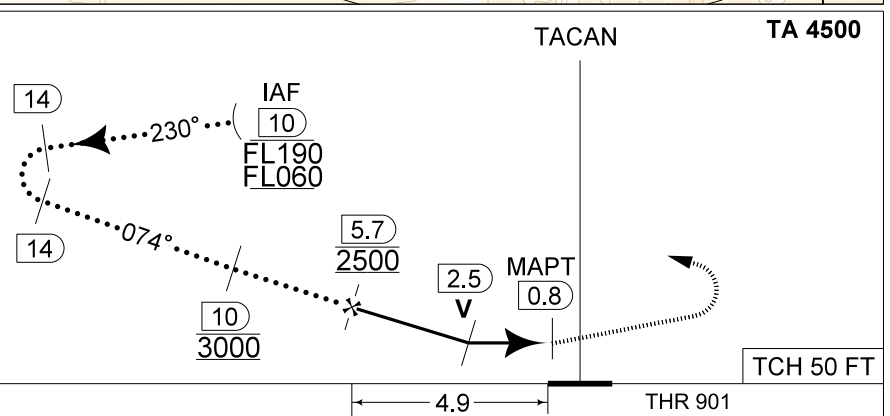
HPMA-TACAN RWY 08R
FLORENNES (EBFS)

BELGA RADAR 374.400 129.325		FLORENNES APP 372.275 124.380		FLORENNES TWR 234.800 125.880		FLORENNES GND 356.925 122.100	
TACAN BFS CH 52X	APP COURSE 074°	FAF ALT 2500 FT	DESCENT GR 5.2%(3.00°)	MDA 1480	THR 901 FT	ALS 335 M	LDA 5964 FT



DME BFS	5	4	3
Altitude	2300	1980	1660
Height	(1400)	(1080)	(760)

MISSED APPROACH
Climb to 2000 FT on R-079. Passed 2.5 DME TACAN, continue the climb to 3000 FT and turn left on track 205° at MAX 300 KIAS to intercept IAF TACAN RWY 08R.



S-ALS

CATEGORY	HPMA
S-TAC 08R	1480 - 2.4 579 (600 - 2.4 / 3.1)
CIRCLING	1560 - 3.2 633 (700 - 3.2)

HPMA-TACAN RWY 08R 50°14.60' N
004°38.74' E **FLORENNES (EBFS)**

BEL DEFENCE, AIR COMPONENT 02-NOV-2023 - THS