

MIPS
INSTRUMENT APPROACH CHART

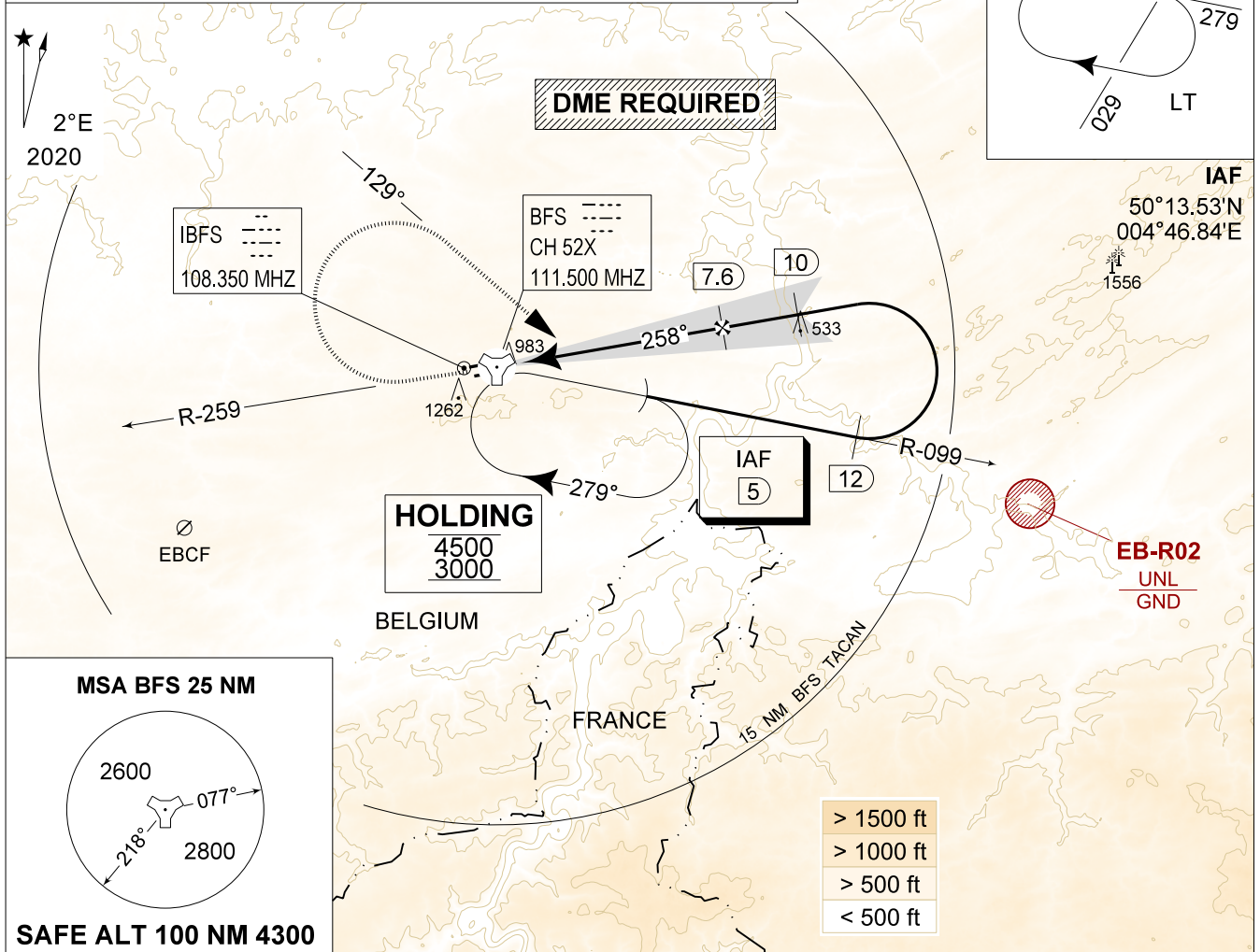
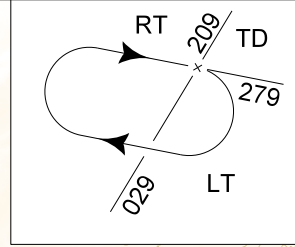
AD ELEV 927

ILS or LOC RWY 26R
FLORENNES (EBFS)

BELGA RADAR 374.400 129.325		FLORENNES APP 372.275 124.380		FLORENNES TWR 234.800 125.880		FLORENNES GND 356.925 122.100	
LOC / DME IBFS 108.350 / 52X	APP COURSE 258°	GS INTCP ALT 3000 FT	GS 2.75°	DA 1124	THR 924 FT	ALS 900 M	LDA 8763 FT

NOTE:

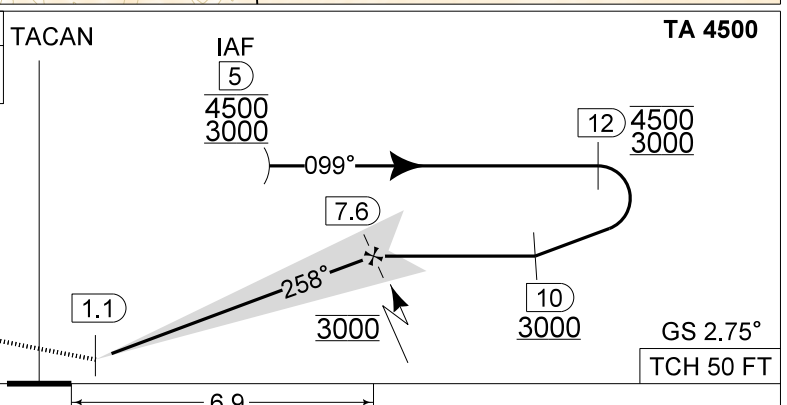
a) DME INFORMATION AVAILABLE UNDER FREQUENCY 111.500 MHZ



DME BFS	7	6	5	4	3	2	TACAN
Altitude	2840	2550	2260	1970	1670	1380	
Height	(1920)	(1630)	(1340)	(1050)	(750)	(460)	

MISSED APPROACH

Climb to 2000 FT on R-259. Passed 2.5 DME TACAN, continue the climb to 3000 FT and turn right on track 129° at MAX 210 KIAS (MAX 300 KIAS for HPMA) to intercept IAF TACAN RWY 26R or ILS RWY 26R.



CAT I THR 924 6.9 TCH 50 FT

CATEGORY	A	B	C	D	HPMA
S-ILS 26R	1124 - 0.8 200 (200 - 0.8 / 1.0) GS 2.75°				
S-LOC 26R	1320 - 1.3 396 (400 - 1.3 / 2.2)				
CIRCLING	1560 - 1.6 633 (700 - 1.6)	1660 - 3.6 733 (800 - 3.6)		1560 - 3.2 633 (700 - 3.2)	

ILS or LOC RWY 26R

50°14.60' N
004°38.74' E

FLORENNES (EBFS)

CHANGES: EB-R02 updated

BEL DEFENCE, AIR COMPONENT 25-JAN-2024 - THS