

MIPS
INSTRUMENT APPROACH CHART

AD ELEV 927

ILS or LOC RWY 08L
FLORENNES (EBFS)

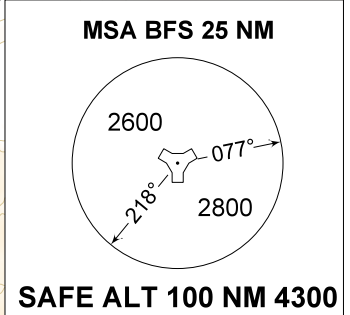
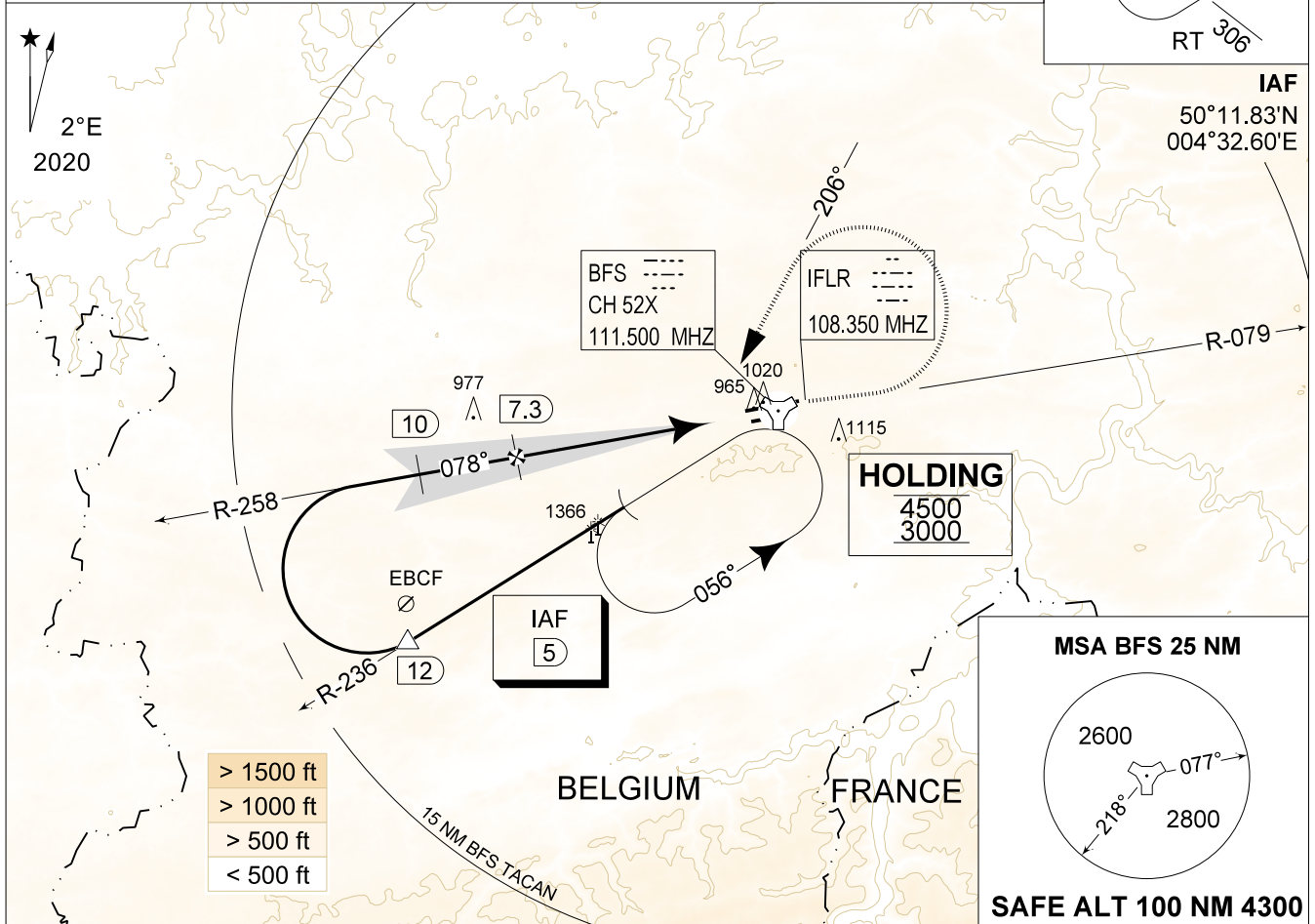
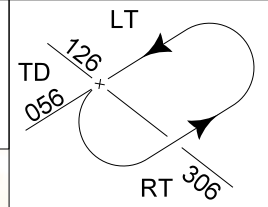
BELGA RADAR 374.400 129.325		FLORENNES APP 372.275 124.380		FLORENNES TWR 234.800 125.880		FLORENNES GND 356.925 122.100	
LOC/DME IFLR 108.350 / 52X	APP COURSE 078°	GS INTCP ALT 3000 FT	GS 3.00°	DA 1100	THR 900 FT	ALS 750 M	LDA 8648 FT

CAUTION:

a) LOCALIZER ANTENNA 1000 FT IN FRONT OF THR RWY 08L, 10 FT ABOVE THR ELEV.

NOTE:

a) DME INFORMATION AVAILABLE UNDER FREQUENCY 111.500 MHZ

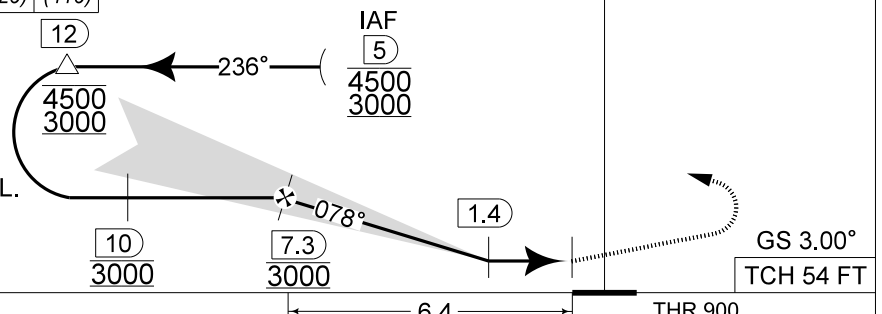


DME BFS	7	6	5	4	3	2
Altitude	2900	2580	2260	1940	1620	1310
Height	(2000)	(1680)	(1360)	(1040)	(720)	(410)

TACAN TA 4500

MISSED APPROACH

Climb to 2000 FT on R-079. Passed 2.5 DME TACAN, continue the climb to 3000 FT and turn left on track 206° at MAX 210 KIAS (MAX 300 KIAS for HPMA) to intercept IAF ILS RWY 08L.



CAT I

CATEGORY	A	B	C	D	HPMA
S-ILS 08L	1100 - 0.8 200 (200 - 0.8 / 0.9) GS 3.00°				
S-LOC 08L	1360 - 1.5 460 (500 - 1.5 / 2.4)	1360 - 1.7 460 (500 - 1.7 / 2.4)			
CIRCLING	1560 - 1.6 633 (700 - 1.6)	1660 - 3.6 733 (800 - 3.6)			1560 - 3.2 633 (700 - 3.2)

ILS or LOC RWY 08L

50°14.60' N
004°38.74' E

FLORENNES (EBFS)

CHANGES: GROUND FREQ updated

BEL DEFENCE, AIR COMPONENT 07-SEP-2023 - THS