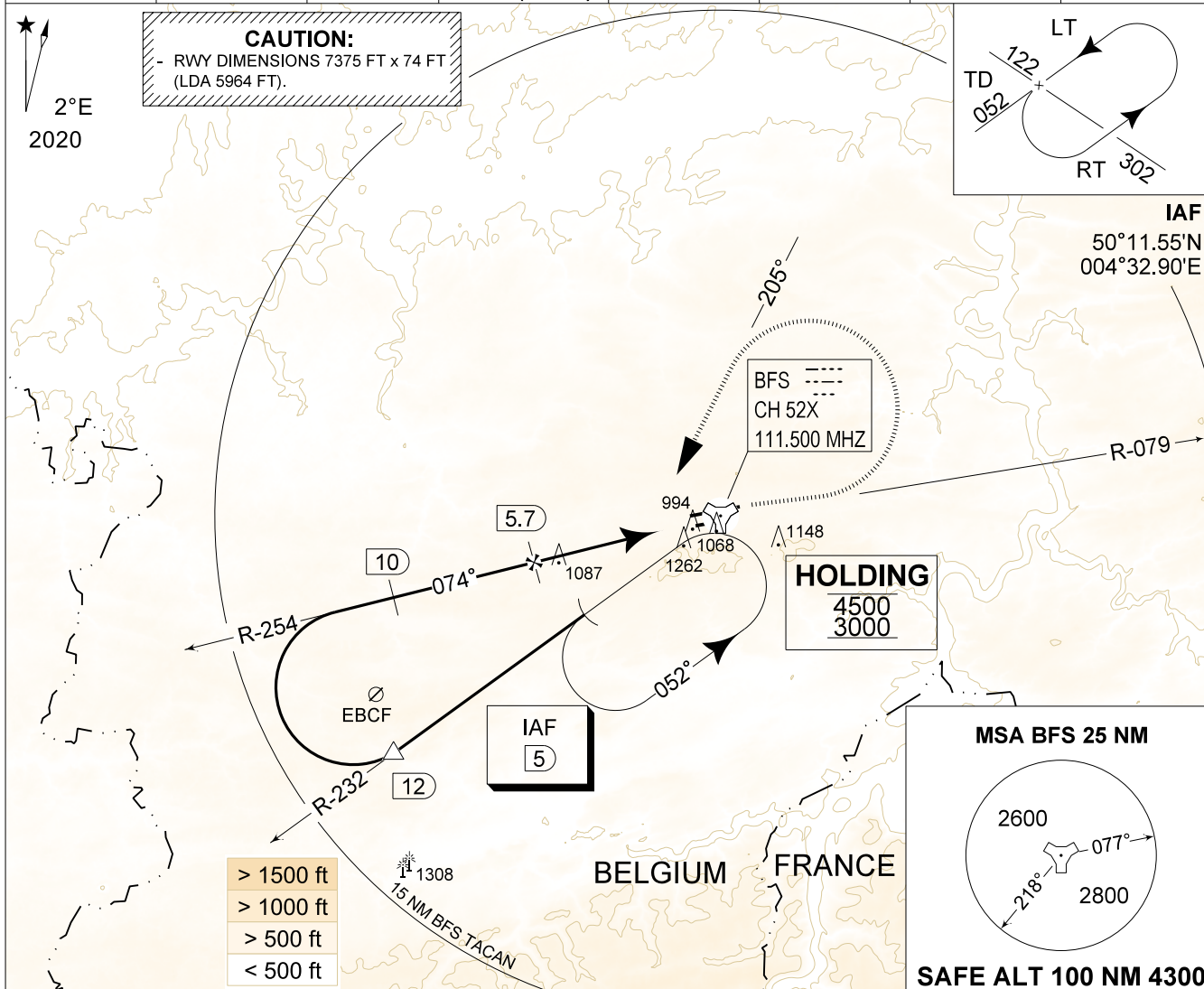


MIPS
INSTRUMENT APPROACH CHART

AD ELEV 927

TACAN RWY 08R
FLORENNES (EBFS)

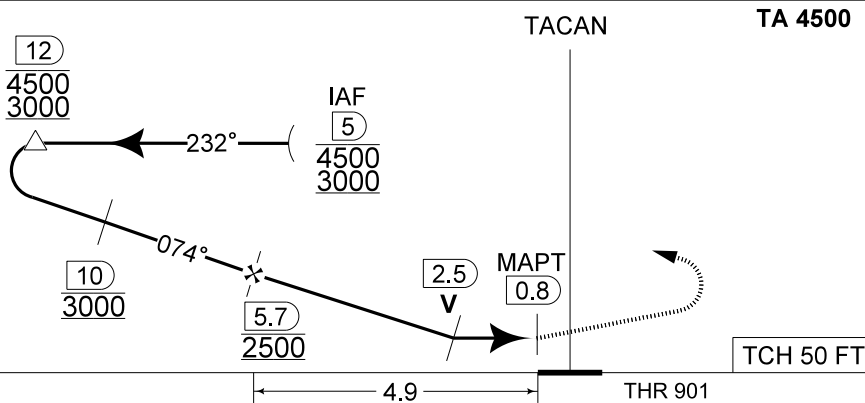
BELGA RADAR		FLORENNES APP		FLORENNES TWR		FLORENNES GND	
374.400	129.325	372.275	124.380	234.800	125.880	356.925	122.100
TACAN	APP COURSE	FAF ALT	DESCENT GR	MDA	THR	ALS	LDA
BFS CH 52X	074°	2500 FT	5.2%(3.00°)	1480	901 FT	335 M	5964 FT



DME BFS	5	4	3
Altitude	2300	1980	1660
Height	(1400)	(1080)	(760)

MISSED APPROACH

Climb to 2000 FT on R-079. Passed 2.5 DME TACAN, continue the climb to 3000 FT and turn left on track 205° at MAX 210 KIAS (MAX 300 KIAS for HPMA) to intercept IAF TACAN RWY 08R.



S-ALS

CATEGORY	A - B		C - D	
S-TAC 08R	1480 - 1.5 579 (600 - 1.5 / 3.1)		1480 - 2.4 579 (600 - 2.4 / 3.1)	
CIRCLING	1560 - 1.6 633 (700 - 1.6)		1660 - 3.6 733 (800 - 3.6)	

TACAN RWY 08R

50°14.60' N
004°38.74' E

FLORENNES (EBFS)

CHANGES: GROUND FREQ updated

BEL DEFENCE, AIR COMPONENT 07-SEP-2023 - THS